

Bandpass Filter

RBP-275+

50Ω 268 to 282 MHz

Maximum Ratings

Operating Temperature	-40°C to 85°C
Storage Temperature	-55°C to 100°C
RF Power Input	0.5W at 25°C

Permanent damage may occur if any of these limits are exceeded.

Pin Connections

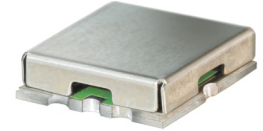
RF IN	2
RF OUT	6
GROUND	1, 3, 4, 5, 7, 8

Features

- Linear Phase, up to ± 8 deg. Typ @ Fc ± 30 MHz
- Good Return Loss, 20 dB Typ @ Pass Band
- Small Size (0.35" X 0.35")

Applications

- Harmonic Rejection
- Transmitters/Receivers



CASE STYLE: GP731
PRICE: \$15.95 ea. QTY (1-9)

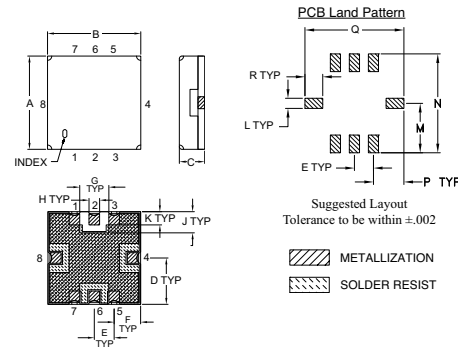
+ RoHS compliant in accordance with EU Directive (2002/95/EC)

The +Suffix has been added in order to identify RoHS Compliance. See our web site for RoHS Compliance methodologies and qualifications.

Bandpass Filter Electrical Specifications (T_{AMB} = 25°C)

CENTER FREQ. (MHz)	PASSBAND (MHz) (Loss < 3dB)	STOPBANDS (MHz)				MAXIMUM DEVIATION FROM LINEAR PHASE (deg.)	VSWR (:1)	
		Loss > 20dB	Loss > 35dB				Passband	Stopband
Fc	F1 - F2	F3	F4	F5	F6	Fc ± 30MHz	Max.	Typ.
275	268 - 282	209	350	120	370-1000	±15	1.7	18

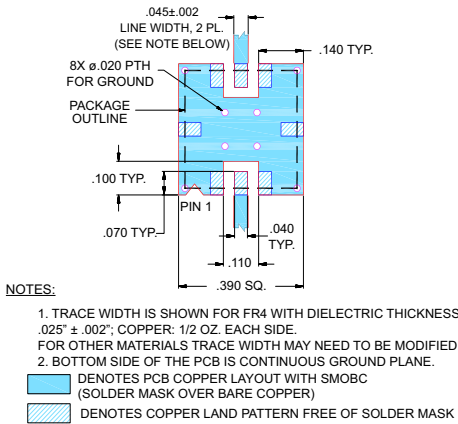
Outline Drawing



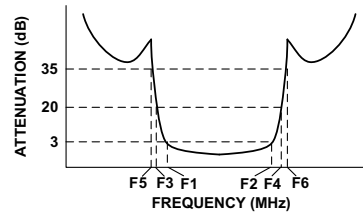
Outline Dimensions (inch/mm)

A	B	C	D	E	F	G	H	J
.350	.350	.100	.175	.075	.100	.110	.040	.080
8.89	8.89	2.54	4.45	1.93	2.54	2.79	1.02	2.03
K	L	M	N	P	Q	R		wt.
.050	.040	.195	.390	.120	.390	.070		grams
1.27	1.02	4.95	9.91	3.05	9.91	1.78		0.25

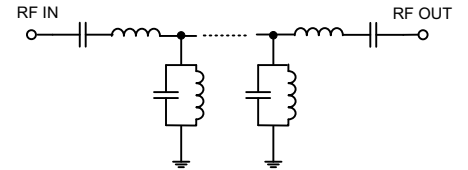
Demo Board MCL P/N: TB-332 Suggested PCB Layout (PL-176)



Typical Frequency Response

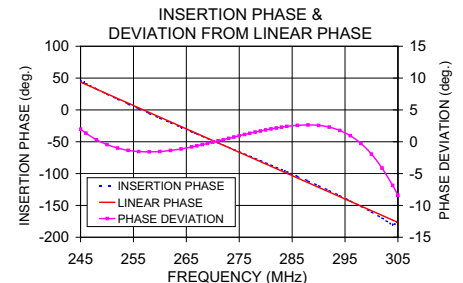
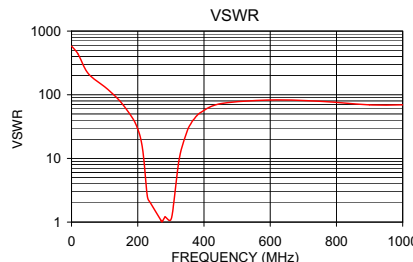


Functional Schematic



Typical Performance Data at 25°C

Frequency (MHz)	Insertion Loss (dB)	VSWR (:1)	Frequency (MHz)	Deviation from Linear Phase (deg.)
0.3	76.04	579.06	245	1.98
120	42.54	108.58	250	-0.44
209	29.34	20.22	254	-1.35
220	11.85	7.94	258	-1.58
225	6.57	3.95	262	-1.36
245	2.29	1.77	268	-0.45
268	1.73	1.11	270	-0.07
275	1.75	1.04	275	0.94
282	1.85	1.21	280	1.86
305	3.31	1.38	282	2.16
320	10.72	6.32	286	2.58
330	17.48	12.99	290	2.57
350	29.80	27.59	294	1.78
370	41.72	41.37	296	0.95
450	63.62	72.39	300	-1.94
1000	54.60	69.49	305	-8.40



minicircuits.com

P.O. Box 350166, Brooklyn, New York 11235-0003 (718) 934-4500 Fax (718) 332-4661 For detailed performance specs & shopping online see Mini-Circuits web site



The Design Engineers Search Engine Provides ACTUAL Data Instantly From MINI-CIRCUITS At: www.minicircuits.com

IF/RF MICROWAVE COMPONENTS

REV. C
M121747
EDR-6482
RBP-275+
RAV/URJ
090709
Page 1 of 1