

Bandpass Filter

RBP-204+

50Ω 175 to 237 MHz

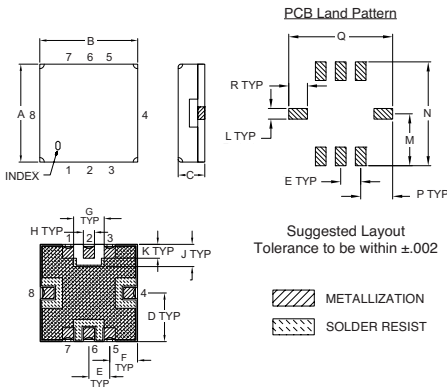
Maximum Ratings

Operating Temperature	-40°C to 85°C
Storage Temperature	-55°C to 100°C
RF Power Input	0.5W at 25°C

Pin Connections

RF IN	2
RF OUT	6
GROUND	1, 3, 4, 5, 7, 8

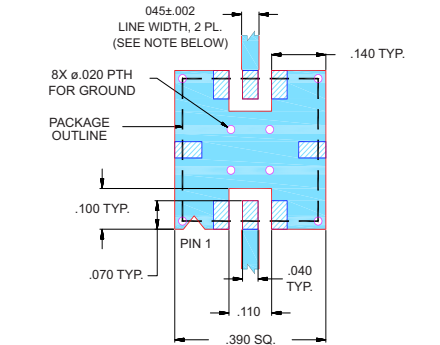
Outline Drawing



Outline Dimensions (inch/mm)

A	B	C	D	E	F	G	H	J	
.350	.350	.100	.175	.075	.100	.110	.040	.080	
8.89	8.89	2.54	4.45	1.93	2.54	2.79	1.02	2.03	
K	L	M	N	P	Q	R	WT.		
.050	.040	.195	.390	.120	.390	.070	GRAM		
1.27	1.02	4.95	9.91	3.05	9.91	1.78			

Demo Board MCL P/N: TB-332 Suggested PCB Layout (PL-176)



NOTES:
 1. TRACE WIDTH IS SHOWN FOR FR4 WITH DIELECTRIC THICKNESS .025" ± .002"; COPPER: 1/2 OZ. EACH SIDE. FOR OTHER MATERIALS TRACE WIDTH MAY NEED TO BE MODIFIED.
 2. BOTTOM SIDE OF THE PCB IS CONTINUOUS GROUND PLANE.
 ■ DENOTES PCB COPPER LAYOUT WITH SMOBC (SOLDER MASK OVER BARE COPPER)
 ■ DENOTES COPPER LAND PATTERN FREE OF SOLDER MASK

Features

- VSWR, 1.4:1 Typ @ Passband
- Small Size (0.35" X 0.35")
- Shielded case
- Aqueous washable

Applications

- Military Radio
- Harmonic Rejection
- Transmitters/Receivers



CASE STYLE: GP731
 PRICE: \$15.95 ea. QTY (1-9)

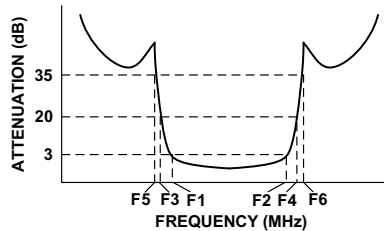
+ RoHS compliant in accordance with EU Directive (2002/95/EC)

The +Suffix has been added in order to identify RoHS Compliance. See our web site for RoHS Compliance methodologies and qualifications.

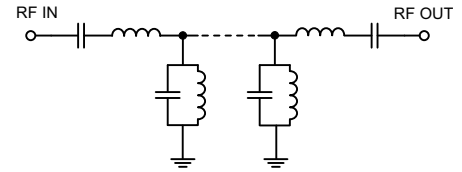
Bandpass Filter Electrical Specifications (T_{AMB} = 25°C)

CENTER FREQ. (MHz)	PASSBAND (MHz) (Loss < 3dB)	STOPBANDS (MHz)				VSWR (:1)		
		Loss > 20dB		Loss > 35dB		Passband		Stopband
Fc	F1 - F2	F3	F4	F5	F6	Typ.	Max.	Typ.
204	175 - 237	135	300	115	350 - 2000	1.4	2.1	18

Typical Frequency Response

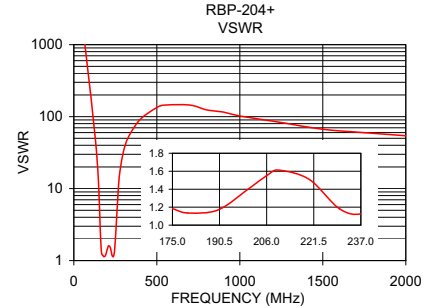
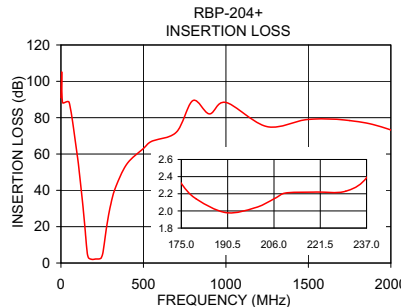


Functional Schematic



Typical Performance Data at 25°C

Frequency (MHz)	Insertion Loss (dB)	VSWR (:1)
0.5	90.94	1737.18
50.0	88.29	1737.18
115.0	46.96	102.19
135.0	29.78	36.20
150.0	14.59	10.31
157.0	7.46	3.84
162.0	4.21	1.85
175.0	2.32	1.18
204.0	2.11	1.51
237.0	2.40	1.12
255.0	5.86	2.95
264.0	11.45	7.31
280.0	21.72	18.70
300.0	31.40	33.42
350.0	46.24	69.49
700.0	72.03	144.77
1500.0	79.02	66.82
2000.0	73.23	54.29



P.O. Box 350166, Brooklyn, New York 11235-0003 (718) 934-4500 Fax (718) 332-4661 For detailed performance specs & shopping online see Mini-Circuits web site



The Design Engineers Search Engine Provides ACTUAL Data Instantly From MINI-CIRCUITS At: www.minicircuits.com

IF/RF MICROWAVE COMPONENTS