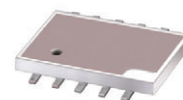


Surface Mount Power Splitter/Combiner

QBA-12+ QBA-12

2 Way-90° 50Ω 800 to 1200 MHz



Maximum Ratings

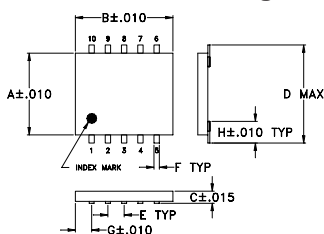
Operating Temperature	-55°C to 100°C
Storage Temperature	-55°C to 100°C

Permanent damage may occur if any of these limits are exceeded.

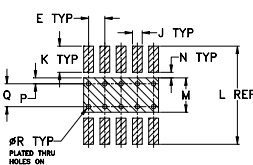
Pin Connections

SUM PORT	1
PORT 1 (+90°)	10
PORT 2 (0°)	6
GROUND	2,3,4,7,8,9
50 OHM TERM EXTERNAL	5

Outline Drawing



PCB Land Pattern

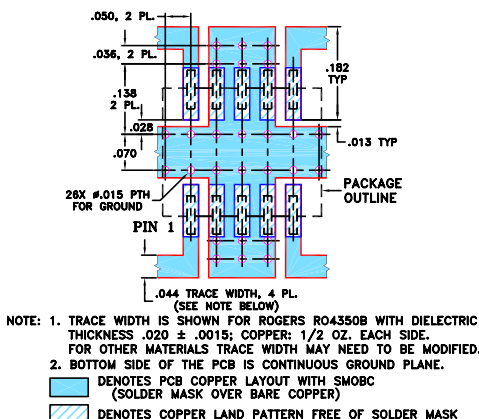


Suggested Layout,
Tolerance to be within ±.002
ADJACENT GROUND PINS SHALL BE CONNECTED TO EACH OTHER AND TO GROUND PAD

Outline Dimensions (inch/mm)

A	B	C	D	E	F	G	H	J	K	L	M	N	P	Q	R	wt
.250	.300	.050	.310	.050	.015	.050	.066	.030	.095	.330	.100	.020	.015	.070	.014	grams
6.35	7.62	1.27	7.87	1.27	0.38	1.27	1.68	0.76	2.41	8.38	2.54	0.51	0.38	1.78	0.36	0.2

Demo Board MCL P/N: TB-115+ Suggested PCB Layout (PL-004)



Features

- low insertion loss, 0.25 dB typ.
- high power capability, 50W
- isolation, 23 dB typ.
- ceramic body, good for heat dissipation
- solder plated leads for excellent solderability
- aqueous washable
- protected by U.S. Patent 5,534,830

Applications

- cellular
- ISM

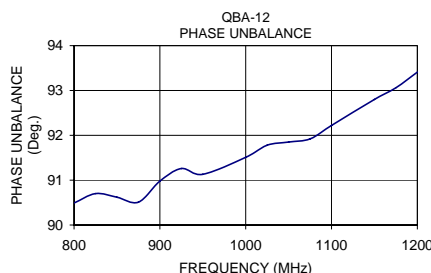
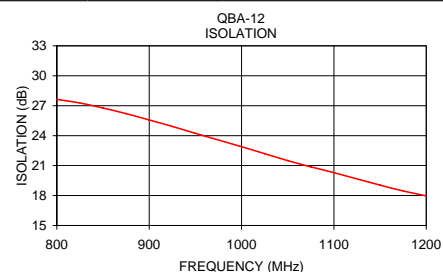
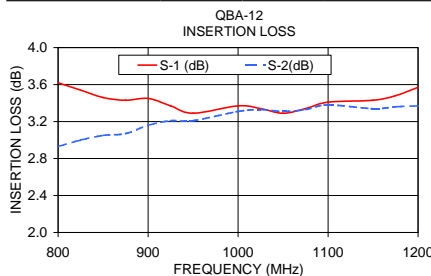
Electrical Specifications

FREQ. RANGE (MHz)	ISOLATION (dB)		INSERTION LOSS ¹ (dB) Avg. of Coupled Outputs less 3 dB			PHASE UNBALANCE (Degrees)	AMPLITUDE UNBALANCE (dB)	INPUT POWER ² (W)
	Typ.	Min.	f_L \bar{X}	f_U \bar{X}	σ			
800-1200	23	14	0.25	0.44	0.02	Max.	Max.	below 25°C

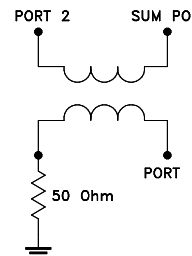
1. Includes test fixture losses.
2. Derate linearly to 10W at 100°C
Thermal compound may be applied to decrease body temperature. See application note AN-10-007

Typical Performance Data

Frequency (MHz)	Insertion Loss (dB)		Amplitude Unbalance (dB)	Isolation (dB)	Phase Unbalance (deg.)	VSWR S	VSWR 1	VSWR 2
	S-1	S-2						
800.00	3.62	2.93	0.70	27.63	90.49	1.08	1.21	1.09
825.00	3.54	3.00	0.54	27.27	90.70	1.08	1.21	1.09
850.00	3.46	3.05	0.40	26.77	90.62	1.08	1.22	1.09
875.00	3.43	3.07	0.36	26.21	90.51	1.08	1.23	1.09
900.00	3.45	3.16	0.28	25.57	90.98	1.09	1.24	1.10
925.00	3.37	3.21	0.16	24.92	91.26	1.09	1.25	1.10
950.00	3.29	3.21	0.09	24.23	91.13	1.11	1.26	1.11
1000.00	3.37	3.31	0.06	22.89	91.51	1.13	1.28	1.13
1025.00	3.34	3.33	0.01	22.20	91.78	1.15	1.29	1.15
1050.00	3.29	3.31	0.03	21.50	91.85	1.17	1.30	1.16
1075.00	3.34	3.33	0.01	20.87	91.92	1.19	1.31	1.17
1100.00	3.41	3.38	0.03	20.29	92.22	1.21	1.32	1.19
1150.00	3.43	3.34	0.09	19.04	92.80	1.26	1.35	1.23
1175.00	3.48	3.36	0.12	18.46	93.06	1.28	1.36	1.25
1200.00	3.57	3.37	0.20	17.96	93.41	1.31	1.37	1.27



electrical schematic



For detailed performance specs & shopping online see web site

Mini-Circuits®
ISO 9001 ISO 14001 AS 9100 CERTIFIED
The Design Engineers Search Engine Provides ACTUAL Data Instantly at minicircuits.com

P.O. Box 350166, Brooklyn, New York 11235-0003 (718) 934-4500 Fax (718) 332-4861

Notes: 1. Performance and quality attributes and conditions not expressly stated in this specification sheet are intended to be excluded and do not form a part of this specification sheet. 2. Electrical specifications and performance data contained herein are based on Mini-Circuit's applicable established test performance criteria and measurement instructions. 3. The parts covered by this specification sheet are subject to Mini-Circuits standard limited warranty and terms and conditions (collectively, "Standard Terms"); Purchasers of this part are entitled to the rights and benefits contained therein. For a full statement of the Standard Terms and the exclusive rights and remedies thereunder, please visit Mini-Circuits' website at www.minicircuits.com/MCLStore/terms.jsp.

REV. C
M102713
EDB-991005
QBA-12
WZ/BC/CP
090824