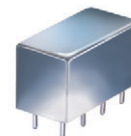


Plug-In

Power Splitter/Combiner

PSCQ-2-8+

2 Way-90° 50Ω 2 to 8 MHz



CASE STYLE: A01
PRICE: \$56.45 ea. QTY. (1-9)

Maximum Ratings

Operating Temperature	-55°C to 100°C
Storage Temperature	-55°C to 100°C
Power Input (as a splitter)	50mW max.
Internal Dissipation	0.125W max.
Permanent damage may occur if any of these limits are exceeded.	

Pin Connections

SUM PORT	1
PORT 1 (+90°)	2
PORT 2 (0°)	5
GROUND	3,4,7,8
CASE GROUND	3,4,7,8
NOT USED	6

Features

- low insertion loss, 0.3 dB typ.
- high isolation, 36 dB typ.
- low amplitude unbalance, 0.5 dB max.
- rugged shielded case

Applications

- modulators
- balanced amplifiers

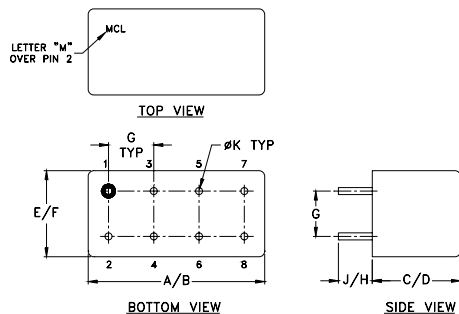
+ RoHS compliant in accordance with EU Directive (2002/95/EC)

The +Suffix has been added in order to identify RoHS Compliance. See our web site for RoHS Compliance methodologies and qualifications.

Electrical Specifications

FREQ. RANGE (MHz)	ISOLATION (dB)	INSERTION LOSS (dB) Avg. of Coupled Outputs less 3 dB	PHASE UNBALANCE (Degrees)	AMPLITUDE UNBALANCE (dB)
f_L - f_U	Typ. Min.	Typ. Max.	Max.	Max.
2-8	36 27	0.3 0.7	6	0.5

Outline Drawing

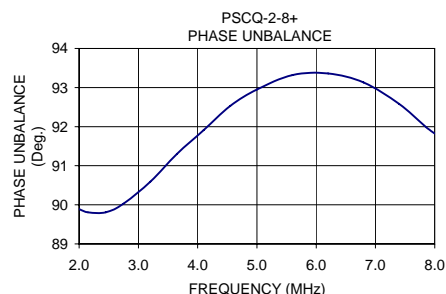
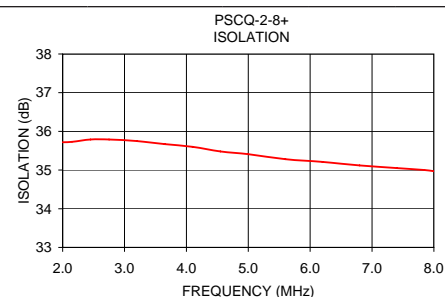
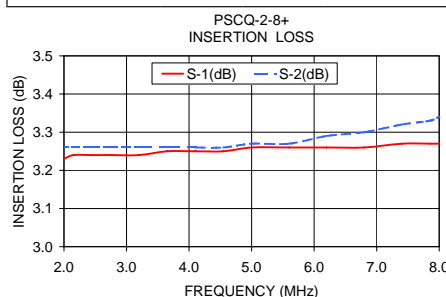


Outline Dimensions (inch/mm)

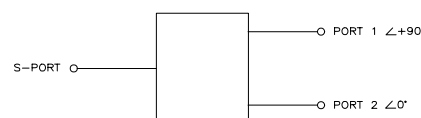
A	B	C	D	E	F	
.770	.800	.385	.400	.370	.400	
19.56	20.32	9.78	10.16	9.40	10.16	
G	H	J	K			wt
.200	.20	.14	.031			grams
5.08	5.08	3.56	0.79			5.2

Typical Performance Data

Frequency (MHz)	Insertion Loss (dB)		Amplitude Unbalance (dB)	Isolation (dB)	Phase Unbalance (deg.)	VSWR S	VSWR 1	VSWR 2
	S-1	S-2						
2.00	3.23	3.26	0.02	35.72	89.89	1.22	1.21	1.24
2.15	3.24	3.26	0.02	35.73	89.81	1.21	1.20	1.24
2.45	3.24	3.26	0.02	35.79	89.81	1.21	1.18	1.25
2.75	3.24	3.26	0.02	35.79	90.03	1.20	1.16	1.26
3.20	3.24	3.26	0.02	35.75	90.59	1.20	1.13	1.27
3.65	3.25	3.26	0.02	35.67	91.30	1.19	1.11	1.27
4.10	3.25	3.26	0.01	35.60	91.91	1.18	1.10	1.27
4.55	3.25	3.26	0.01	35.48	92.53	1.18	1.09	1.27
5.00	3.26	3.27	0.01	35.41	92.95	1.17	1.08	1.26
5.60	3.26	3.27	0.01	35.28	93.32	1.17	1.09	1.24
6.20	3.26	3.29	0.02	35.21	93.36	1.17	1.09	1.23
6.80	3.26	3.30	0.04	35.12	93.13	1.17	1.10	1.21
7.40	3.27	3.32	0.06	35.05	92.58	1.17	1.12	1.19
7.85	3.27	3.33	0.06	35.00	91.99	1.17	1.13	1.18
8.00	3.27	3.34	0.07	34.97	91.82	1.17	1.13	1.18



electrical schematic



For detailed performance specs & shopping online see web site

Mini-Circuits®
ISO 9001 ISO 14001 AS 9100 CERTIFIED

P.O. Box 350166, Brooklyn, New York 11235-0003 (718) 934-4500 Fax (718) 332-4661 *The Design Engineers Search Engine* Provides ACTUAL Data Instantly at minicircuits.com

IF/RF MICROWAVE COMPONENTS

Notes: 1. Performance and quality attributes and conditions not expressly stated in this specification sheet are intended to be excluded and do not form a part of this specification sheet. 2. Electrical specifications and performance data contained herein are based on Mini-Circuit's applicable established test performance criteria and measurement instructions. 3. The parts covered by this specification sheet are subject to Mini-Circuits standard limited warranty and terms and conditions (collectively, "Standard Terms"); Purchasers of this part are entitled to the rights and benefits contained therein. For a full statement of the Standard Terms and the exclusive rights and remedies thereunder, please visit Mini-Circuits' website at www.minicircuits.com/MC/StandardTerms.htm.

REV. B
M121747
PSCQ-2-8+
HY/TD/CP
090824