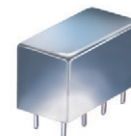


Plug-In Power Splitter/Combiner

PSCQ-2-70+ PSCQ-2-70

2 Way-90° 50Ω 40 to 70 MHz



Maximum Ratings

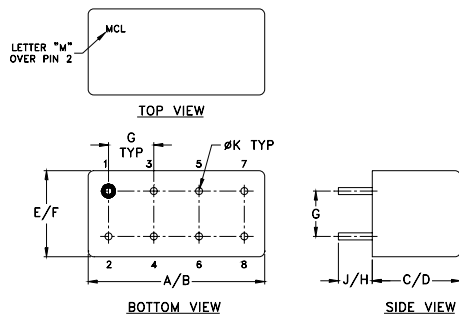
Operating Temperature	-55°C to 100°C
Storage Temperature	-55°C to 100°C
Power Input (as a splitter)	1W max.

Permanent damage may occur if any of these limits are exceeded.

Pin Connections

SUM PORT	1
PORT 1 (+90°)	2
PORT 2 (0°)	5
GROUND	3,4,7,8
CASE GROUND	3,4,7,8
50 OHM TERM EXTERNAL	6

Outline Drawing



Outline Dimensions (inch/mm)

A	B	C	D	E	F	
.770	.800	.385	.400	.370	.400	
19.56	20.32	9.78	10.16	9.40	10.16	
G	H	J	K			wt
.200	.20	.14	.031			grams
5.08	5.08	3.56	0.79			5.2

Features

- low insertion loss, 0.3 dB typ.
- high isolation, 30 dB typ.
- excellent phase unbalance, 1 deg. typ.
- excellent VSWR, 1.10:1 typ.
- rugged shielded case

Applications

- modulators
- balanced amplifiers

CASE STYLE: A01
PRICE: \$28.20 ea. QTY. (1-9)

+ RoHS compliant in accordance with EU Directive (2002/95/EC)

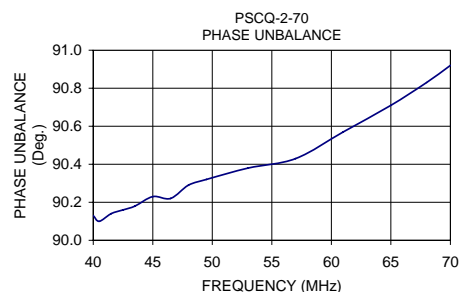
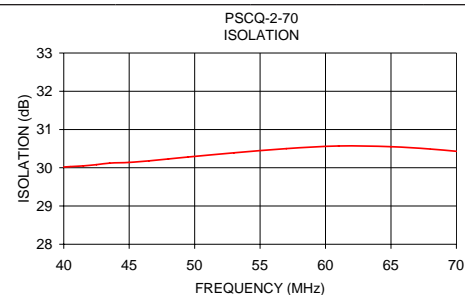
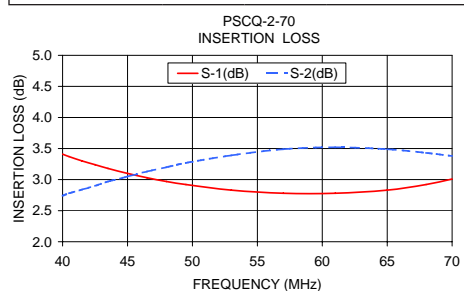
The +Suffix identifies RoHS Compliance. See our web site for RoHS Compliance methodologies and qualifications.

Electrical Specifications

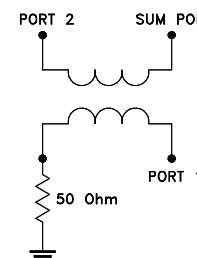
FREQ. RANGE (MHz)	ISOLATION (dB)	INSERTION LOSS (dB) Avg. of Coupled Outputs less 3 dB	PHASE UNBALANCE (Degrees)	AMPLITUDE UNBALANCE (dB)
f_L - f_U	Typ. Min.	Typ. Max.	Max.	Max.
40-70	30 20	0.3 0.7	3	1.5

Typical Performance Data

Frequency (MHz)	Insertion Loss (dB)		Amplitude Unbalance (dB)	Isolation (dB)	Phase Unbalance (deg.)	VSWR S	VSWR 1	VSWR 2
	S-1	S-2						
40.00	3.41	2.74	0.67	30.02	90.13	1.03	1.04	1.05
40.50	3.37	2.78	0.59	30.03	90.10	1.03	1.04	1.05
41.50	3.30	2.84	0.46	30.05	90.14	1.03	1.04	1.05
42.50	3.24	2.90	0.34	30.08	90.16	1.03	1.04	1.05
43.50	3.18	2.97	0.21	30.12	90.18	1.03	1.04	1.05
45.00	3.10	3.05	0.06	30.14	90.23	1.03	1.04	1.05
46.50	3.03	3.13	0.10	30.18	90.22	1.03	1.04	1.05
48.00	2.97	3.20	0.23	30.23	90.29	1.02	1.03	1.05
49.50	2.92	3.27	0.35	30.28	90.32	1.02	1.03	1.05
53.00	2.83	3.39	0.56	30.39	90.38	1.02	1.03	1.04
57.00	2.78	3.49	0.71	30.50	90.43	1.02	1.03	1.04
61.00	2.78	3.52	0.75	30.57	90.57	1.03	1.04	1.04
65.00	2.83	3.49	0.66	30.55	90.71	1.04	1.04	1.03
68.00	2.92	3.43	0.52	30.49	90.83	1.05	1.05	1.03
70.00	3.01	3.38	0.37	30.43	90.92	1.06	1.05	1.03



electrical schematic



For detailed performance specs & shopping online see web site

Mini-Circuits®
ISO 9001 ISO 14001 AS 9100 CERTIFIED
The Design Engineers Search Engine Provides ACTUAL Data Instantly at minicircuits.com

P.O. Box 350166, Brooklyn, New York 11235-0003 (718) 934-4500 Fax (718) 332-4661

Notes: 1. Performance and quality attributes and conditions not expressly stated in this specification sheet are intended to be excluded and do not form a part of this specification sheet. 2. Electrical specifications and performance data contained herein are based on Mini-Circuit's applicable established test performance criteria and measurement instructions. 3. The parts covered by this specification sheet are subject to Mini-Circuits standard limited warranty and terms and conditions (collectively, "Standard Terms"); Purchasers of this part are entitled to the rights and benefits contained therein. For a full statement of the Standard Terms and the exclusive rights and remedies thereunder, please visit Mini-Circuits' website at www.minicircuits.com/MCLStore/terms.jsp.

REV. A
M98898
PSCQ-2-70
HY/TD/CP
090824