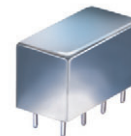


# Plug-In Power Splitter/Combiner

2 Way-90° 50Ω 23 to 40 MHz

**PSCQ-2-40+**  
**PSCQ-2-40**



CASE STYLE: A01  
PRICE: \$24.20 ea. QTY. (1-9)

**+ RoHS compliant in accordance with EU Directive (2002/95/EC)**

The +Suffix identifies RoHS Compliance. See our web site for RoHS Compliance methodologies and qualifications.

## Maximum Ratings

Operating Temperature	-55°C to 100°C
Storage Temperature	-55°C to 100°C
Power Input (as a splitter)	1W max.

Permanent damage may occur if any of these limits are exceeded.

## Pin Connections

SUM PORT	1
PORT 1 (+90°)	2
PORT 2 (0°)	5
GROUND	3,4,7,8
CASE GROUND	3,4,7,8
50 OHM TERM EXTERNAL	6

## Features

- low insertion loss, 0.3 dB typ.
- excellent VSWR, 1.15:1 typ.
- rugged shielded case

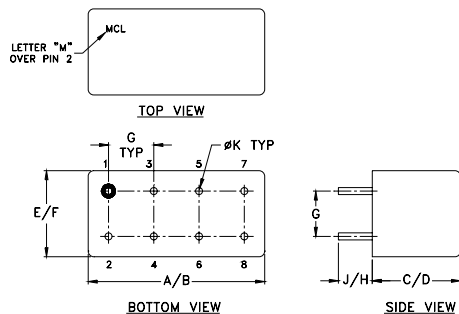
## Applications

- modulators
- balanced amplifiers

## Electrical Specifications

FREQ. RANGE (MHz)	ISOLATION (dB)	INSERTION LOSS (dB) Avg. of Coupled Outputs less 3 dB	PHASE UNBALANCE (Degrees)	AMPLITUDE UNBALANCE (dB)
$f_l$ - $f_u$	Typ. Min.	Typ. Max.	Max.	Max.
23-40	21 18	0.3 0.7	3	1.5

## Outline Drawing

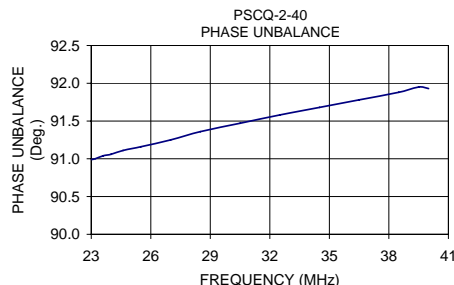
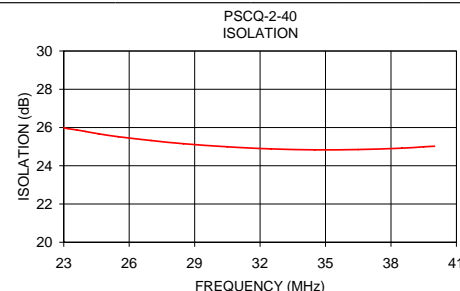
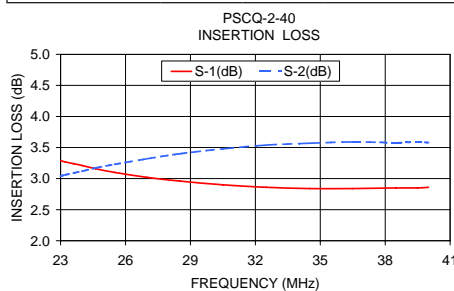


## Outline Dimensions (inch/mm)

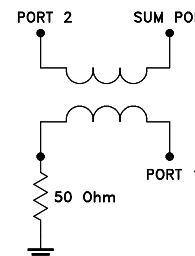
A	B	C	D	E	F	
.770	.800	.385	.400	.370	.400	
19.56	20.32	9.78	10.16	9.40	10.16	
G	H	J	K			wt
.200	.20	.14	.031			grams
5.08	5.08	3.56	0.79			5.2

## Typical Performance Data

Frequency (MHz)	Insertion Loss (dB)		Amplitude Unbalance (dB)	Isolation (dB)	Phase Unbalance (deg.)	VSWR S	VSWR 1	VSWR 2
	S-1	S-2						
23.00	3.29	3.04	0.25	25.98	90.99	1.11	1.09	1.11
23.20	3.27	3.06	0.21	25.94	91.00	1.11	1.09	1.11
23.60	3.24	3.09	0.15	25.87	91.04	1.11	1.09	1.12
24.00	3.21	3.12	0.09	25.79	91.06	1.11	1.10	1.12
24.60	3.16	3.17	0.00	25.67	91.11	1.11	1.10	1.12
25.50	3.10	3.23	0.12	25.52	91.16	1.11	1.10	1.12
27.00	3.02	3.32	0.30	25.32	91.25	1.12	1.10	1.13
28.50	2.96	3.40	0.44	25.15	91.36	1.12	1.11	1.13
30.50	2.90	3.48	0.58	24.99	91.47	1.12	1.11	1.13
32.50	2.86	3.54	0.68	24.88	91.58	1.12	1.12	1.14
34.50	2.84	3.57	0.73	24.83	91.68	1.13	1.12	1.14
36.50	2.84	3.59	0.75	24.85	91.78	1.13	1.12	1.14
38.50	2.85	3.58	0.74	24.92	91.88	1.13	1.12	1.14
39.50	2.85	3.59	0.73	24.99	91.95	1.13	1.12	1.14
40.00	2.86	3.58	0.72	25.02	91.93	1.13	1.12	1.14



## electrical schematic



For detailed performance specs & shopping online see web site

**Mini-Circuits®**  
ISO 9001 ISO 14001 AS 9100 CERTIFIED

P.O. Box 350166, Brooklyn, New York 11235-0003 (718) 934-4500 Fax (718) 332-4661 The Design Engineers Search Engine Provides ACTUAL Data Instantly at [minicircuits.com](http://minicircuits.com)

IFIRF MICROWAVE COMPONENTS

Notes: 1. Performance and quality attributes and conditions not expressly stated in this specification sheet are intended to be excluded and do not form a part of this specification sheet. 2. Electrical specifications and performance data contained herein are based on Mini-Circuit's applicable established test performance criteria and measurement instructions. 3. The parts covered by this specification sheet are subject to Mini-Circuits standard limited warranty and terms and conditions (collectively, "Standard Terms"); Purchasers of this part are entitled to the rights and benefits contained therein. For a full statement of the Standard Terms and the exclusive rights and remedies thereunder, please visit Mini-Circuits' website at [www.minicircuits.com/MCLStore/terms.jsp](http://www.minicircuits.com/MCLStore/terms.jsp).

REV. A  
M98898  
PSCQ-2-40  
HY/TD/CP  
090824