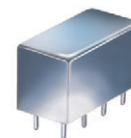


Plug-In

Power Splitter/Combiner

PSCQ-2-14+

2 Way-90° 50Ω 12 to 16 MHz



CASE STYLE: A01
PRICE: \$24.20 ea. QTY. (1-9)

+ RoHS compliant in accordance with EU Directive (2002/95/EC)

The +Suffix has been added in order to identify RoHS Compliance. See our web site for RoHS Compliance methodologies and qualifications.

Maximum Ratings

Operating Temperature	-55°C to 100°C
Storage Temperature	-55°C to 100°C
Power Input (as a splitter)	1W max.
Permanent damage may occur if any of these limits are exceeded.	

Pin Connections

SUM PORT	1
PORT 1 (+90°)	2
PORT 2 (0°)	5
GROUND	3,4,7,8
CASE GROUND	3,4,7,8
50 OHM TERM EXTERNAL	6

Features

- low insertion loss, 0.3 dB typ.
- excellent isolation, 30 dB typ.
- excellent phase unbalance, 1 deg. typ.
- excellent VSWR, 1.05:1 typ.
- rugged shielded case

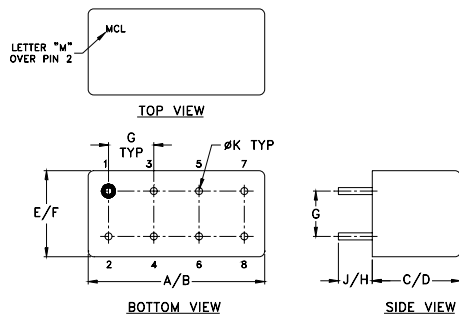
Applications

- modulators
- balanced amplifiers

Electrical Specifications

FREQ. RANGE (MHz)	ISOLATION (dB)		INSERTION LOSS (dB) Avg. of Coupled Outputs less 3 dB		PHASE UNBALANCE (Degrees)	AMPLITUDE UNBALANCE (dB)
	Typ.	Min.	Typ.	Max.	Max.	Max.
f _L -f _U						
12-16	30	25	0.3	0.6	3	1.8

Outline Drawing

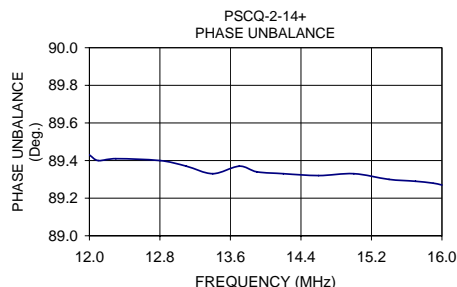
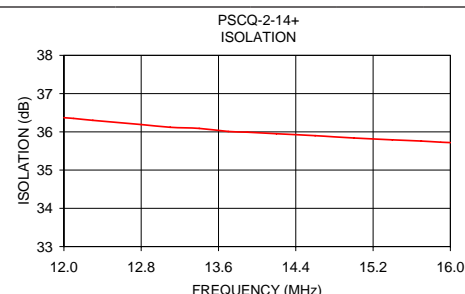
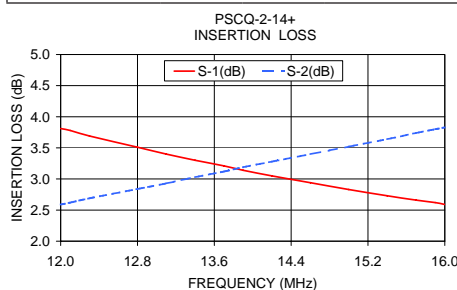


Outline Dimensions (inch/mm)

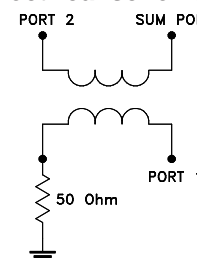
A	B	C	D	E	F	
.770	.800	.385	.400	.370	.400	
19.56	20.32	9.78	10.16	9.40	10.16	
G	H	J	K			wt
.200	.20	.14	.031			grams
5.08	5.08	3.56	0.79			5.2

Typical Performance Data

Frequency (MHz)	Insertion Loss (dB)		Amplitude Unbalance (dB)	Isolation (dB)	Phase Unbalance (deg.)	VSWR S	VSWR 1	VSWR 2
	S-1	S-2						
12.00	3.81	2.59	1.22	36.37	89.43	1.03	1.03	1.02
12.10	3.78	2.62	1.15	36.35	89.40	1.03	1.03	1.02
12.30	3.69	2.69	1.01	36.30	89.41	1.03	1.03	1.02
12.80	3.51	2.84	0.67	36.19	89.40	1.03	1.03	1.02
13.10	3.40	2.93	0.47	36.12	89.37	1.03	1.03	1.02
13.40	3.30	3.03	0.27	36.09	89.33	1.03	1.03	1.02
13.70	3.21	3.12	0.09	36.01	89.37	1.03	1.03	1.02
13.90	3.14	3.19	0.05	35.99	89.34	1.03	1.03	1.02
14.20	3.05	3.28	0.23	35.95	89.33	1.03	1.03	1.02
14.60	2.94	3.40	0.46	35.90	89.32	1.03	1.03	1.02
15.00	2.83	3.52	0.69	35.84	89.33	1.03	1.03	1.02
15.40	2.73	3.64	0.91	35.79	89.30	1.03	1.03	1.02
15.70	2.66	3.74	1.08	35.76	89.29	1.03	1.03	1.02
15.90	2.62	3.80	1.19	35.73	89.28	1.03	1.03	1.02
16.00	2.59	3.83	1.24	35.72	89.27	1.03	1.03	1.02



electrical schematic



For detailed performance specs & shopping online see web site



P.O. Box 350166, Brooklyn, New York 11235-0003 (718) 934-4500 Fax (718) 332-4861 The Design Engineers Search Engine Provides ACTUAL Data Instantly at minicircuits.com

Notes: 1. Performance and quality attributes and conditions not expressly stated in this specification sheet are intended to be excluded and do not form a part of this specification sheet. 2. Electrical specifications and performance data contained herein are based on Mini-Circuit's applicable established test performance criteria and measurement instructions. 3. The parts covered by this specification sheet are subject to Mini-Circuits standard limited warranty and terms and conditions (collectively, "Standard Terms"); Purchasers of this part are entitled to the rights and benefits contained therein. For a full statement of the Standard Terms and the exclusive rights and remedies thereunder, please visit Mini-Circuits' website at www.minicircuits.com/MCLStore/terms.jsp.

REV. A
M108294
PSCQ-2-14+
HY/TD/CP
090824