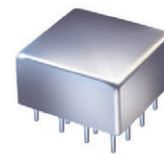


# Plug-In Power Splitter/Combiner

## PSC-9-1+ PSC-9-1

9 Way-0° 50Ω 2 to 300 MHz



CASE STYLE: C07  
PRICE: \$98.45 ea. QTY. (1-9)

+ RoHS compliant in accordance with EU Directive (2002/95/EC)

The +Suffix identifies RoHS Compliance. See our web site for RoHS Compliance methodologies and qualifications.

### Maximum Ratings

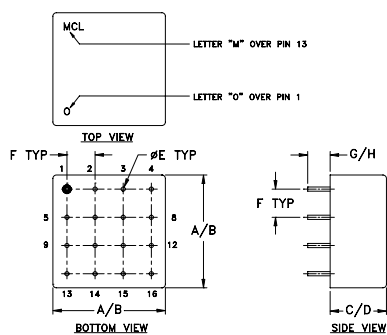
Operating Temperature	-55°C to 100°C
Storage Temperature	-55°C to 100°C
Power Input (as a splitter)	0.5W max.
Internal Dissipation	1.5W max.

Permanent damage may occur if any of these limits are exceeded.

### Pin Connections

SUM PORT	1
PORT 1	9
PORT 2	13
PORT 3	14
PORT 4	15
PORT 5	16
PORT 6	12
PORT 7	8
PORT 8	4
PORT 9	3
GROUND	2,5,6,7,10,11
CASE GROUND	2,5,7,10,11

### Outline Drawing



### Outline Dimensions (inch mm)

A	B	C	D	E	F	G	H	wt
.770	.810	.380	.410	.030	.200	.20	.14	grams
19.56	20.57	9.65	10.41	0.76	5.08	5.08	3.56	11.0

### Features

- low insertion loss, 0.9 dB typ.
- high isolation, 26 dB typ.
- rugged welded construction

### Applications

- VHF
- radio communication
- instrumentation

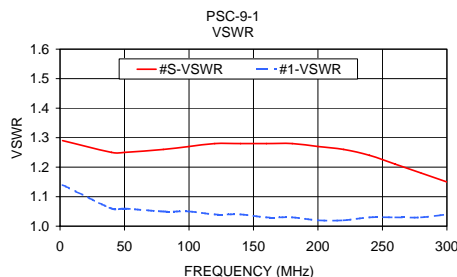
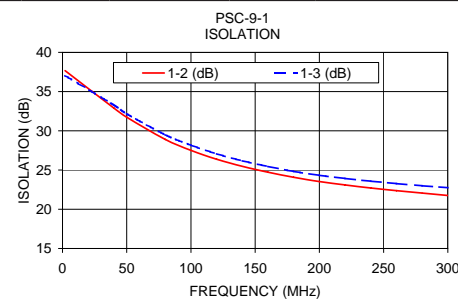
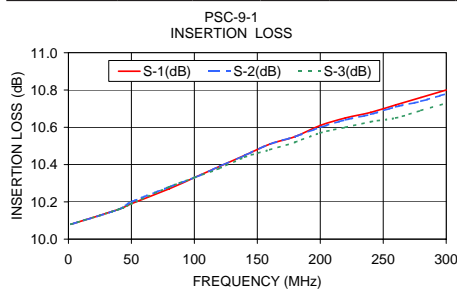
### Electrical Specifications

FREQ. RANGE (MHz)	ISOLATION (dB)			INSERTION LOSS (dB) ABOVE 9.6 dB			PHASE UNBALANCE (Degrees)			AMPLITUDE UNBALANCE (dB)		
	L	M	U	L	M	U	L	M	U	L	M	U
$f_L$ - $f_U$	Typ.	Min.	Typ.	Min.	Typ.	Min.	Typ.	Max.	Typ.	Max.	Typ.	Max.
2-300	38	25	26	20	22	15	0.6	1.1	0.9	1.4	1.5	2.0

L = low range [ $f_L$  to 10  $f_L$ ] M = mid range [10  $f_L$  to  $f_U/2$ ] U = upper range [ $f_U/2$  to  $f_U$ ]

### Typical Performance Data

Freq. (MHz)	Insertion Loss (dB)			Amplitude Unbalance (dB)	Isolation (dB)		Phase unbalance (deg.)	VSWR S	VSWR 1	VSWR 3
	S-1	S-2	S-3		1-2	1-3				
2.00	10.08	10.08	10.08	0.01	37.67	37.03	0.08	1.29	1.14	1.13
40.00	10.16	10.16	10.16	0.01	32.90	33.29	0.33	1.25	1.06	1.06
50.00	10.19	10.20	10.19	0.02	31.73	32.17	0.46	1.25	1.06	1.06
80.00	10.27	10.28	10.28	0.02	28.90	29.50	0.73	1.26	1.05	1.05
100.00	10.33	10.33	10.33	0.02	27.51	28.17	0.92	1.27	1.05	1.04
120.00	10.39	10.39	10.38	0.03	26.38	27.07	1.04	1.28	1.04	1.04
140.00	10.45	10.45	10.44	0.03	25.47	26.18	1.37	1.28	1.04	1.03
160.00	10.51	10.51	10.48	0.05	24.72	25.46	1.45	1.28	1.03	1.02
180.00	10.55	10.55	10.52	0.06	24.08	24.83	1.68	1.28	1.03	1.01
200.00	10.61	10.60	10.57	0.08	23.53	24.33	1.84	1.27	1.02	1.01
220.00	10.65	10.64	10.60	0.08	23.10	23.93	1.98	1.26	1.02	1.01
240.00	10.68	10.67	10.63	0.12	22.71	23.58	2.05	1.24	1.03	1.02
260.00	10.72	10.71	10.65	0.13	22.37	23.28	2.22	1.21	1.03	1.02
280.00	10.76	10.74	10.69	0.15	22.06	23.00	2.32	1.18	1.03	1.03
300.00	10.80	10.78	10.73	0.18	21.76	22.75	2.44	1.15	1.04	1.04



### electrical schematic



For detailed performance specs & shopping online see web site

**Mini-Circuits®**  
ISO 9001 ISO 14001 AS 9100 CERTIFIED  
The Design Engineers Search Engine Provides ACTUAL Data Instantly at [minicircuits.com](http://minicircuits.com)  
IFIRF MICROWAVE COMPONENTS

P.O. Box 350166, Brooklyn, New York 11235-0003 (718) 934-4500 Fax (718) 332-4661

Notes: 1. Performance and quality attributes and conditions not expressly stated in this specification sheet are intended to be excluded and do not form a part of this specification sheet. 2. Electrical specifications and performance data contained herein are based on Mini-Circuit's applicable established test performance criteria and measurement instructions. 3. The parts covered by this specification sheet are subject to Mini-Circuits standard limited warranty and terms and conditions (collectively, "Standard Terms"); Purchasers of this part are entitled to the rights and benefits contained therein. For a full statement of the Standard Terms and the exclusive rights and remedies thereunder, please visit Mini-Circuits' website at [www.minicircuits.com/MCLStore/terms.jsp](http://www.minicircuits.com/MCLStore/terms.jsp).

REV. A  
M111708  
PSC-9-1  
HY/TD/AM  
090827