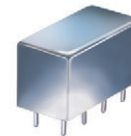


Plug-In

Power Splitter/Combiner

PSC-3-13-39+
PSC-3-13-39

3 Way-0° 50Ω 0.5 to 50 MHz



CASE STYLE: A01
PRICE: \$34.20 ea. QTY. (1-9)

Maximum Ratings

Operating Temperature	-55°C to 100°C
Storage Temperature	-55°C to 100°C
Power Input (as a splitter)	1W max.
Internal Dissipation	0.375W max.
Permanent damage may occur if any of these limits are exceeded.	

Pin Connections

SUM PORT	6
PORT 1	1
PORT 2	2
PORT 3	5
GROUND	3,4,7,8
CASE GROUND	3,4,7,8

Features

- low insertion loss, 0.15 dB typ.
- high isolation, 46 dB typ.
- rugged welded construction

Applications

- HF
- amateur radio
- defense & federal communications

+ RoHS compliant in accordance with EU Directive (2002/95/EC)

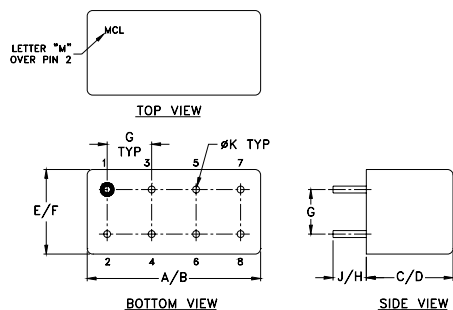
The +Suffix identifies RoHS Compliance. See our web site for RoHS Compliance methodologies and qualifications.

Electrical Specifications

FREQ. RANGE (MHz)	ISOLATION (dB)						INSERTION LOSS (dB) ABOVE 4.8 dB						PHASE UNBALANCE (Degrees)			AMPLITUDE UNBALANCE (dB)		
	L		M		U		L		M		U		L	M	U	L	M	U
	Typ.	Min.	Typ.	Min.	Typ.	Min.	Typ.	Max.	Typ.	Max.	Typ.	Max.	Max.	Max.	Max.	Max.	Max.	Max.
f_L - f_U																		
0.5-50	47	33	46	35	40	33	0.15	0.4	0.15	0.4	0.15	0.4	1.0	1.0	2.0	0.1	0.1	0.1

L = low range [f_L to $10 f_L$] M = mid range [$10 f_L$ to $f_U/2$] U = upper range [$f_U/2$ to f_U]

Outline Drawing

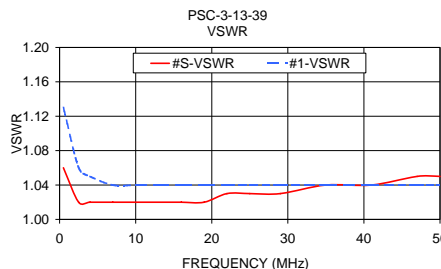
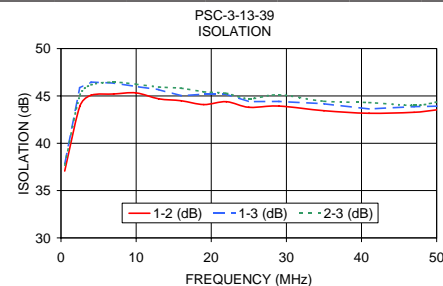
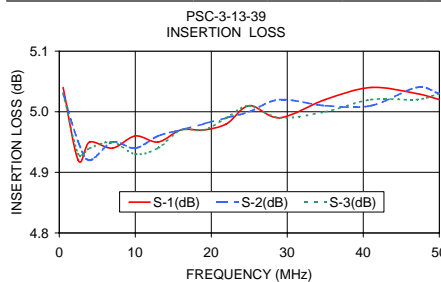


Outline Dimensions (inch/mm)

A	B	C	D	E	F
.770	.800	.385	.400	.370	.400
19.56	20.32	9.78	10.16	9.40	10.16
G	H	J	K	wt	
.200	.20	.14	.031	grams	
5.08	5.08	3.56	0.79	5.2	

Typical Performance Data

Freq. (MHz)	Insertion Loss (dB)			Amp. Unbal. (dB)	Isolation (dB)			Phase Unbal. (deg.)	VSWR S	VSWR 1	VSWR 2	VSWR 3
	S-1	S-2	S-3		1-2	1-3	2-3					
	0.50	5.04	5.03		5.03	0.01	37.06					
2.50	4.92	4.95	4.93	0.02	43.90	45.85	45.04	0.12	1.02	1.06	1.06	1.06
4.00	4.95	4.92	4.94	0.02	45.07	46.47	46.17	0.09	1.02	1.05	1.05	1.05
7.00	4.94	4.95	4.95	0.01	45.20	46.36	46.45	0.13	1.02	1.04	1.04	1.04
10.00	4.96	4.94	4.93	0.03	45.32	46.00	46.24	0.15	1.02	1.04	1.04	1.04
13.00	4.95	4.96	4.94	0.02	44.69	45.67	45.94	0.15	1.02	1.04	1.04	1.04
16.00	4.97	4.97	4.97	0.01	44.49	45.02	45.82	0.27	1.02	1.04	1.04	1.04
19.00	4.97	4.98	4.97	0.01	44.09	45.19	45.43	0.12	1.02	1.04	1.04	1.04
22.00	4.98	4.99	4.99	0.00	44.39	45.19	45.28	0.18	1.03	1.04	1.04	1.04
25.00	5.01	5.00	5.01	0.01	43.80	44.40	44.70	0.34	1.03	1.04	1.04	1.04
29.00	4.99	5.02	4.99	0.02	43.93	44.42	45.12	0.37	1.03	1.04	1.04	1.04
35.00	5.02	5.01	5.00	0.01	43.44	44.18	44.44	0.29	1.04	1.04	1.04	1.04
41.00	5.04	5.01	5.02	0.03	43.17	43.63	44.30	0.38	1.04	1.04	1.04	1.04
47.00	5.03	5.04	5.02	0.01	43.27	43.87	44.00	0.55	1.05	1.04	1.04	1.04
50.00	5.02	5.03	5.03	0.01	43.53	43.92	44.35	0.47	1.05	1.04	1.04	1.04



electrical schematic



Mini-Circuits®
ISO 9001 ISO 14001 AS 9100 CERTIFIED
IFIRF MICROWAVE COMPONENTS

For detailed performance specs & shopping online see web site

P.O. Box 350166, Brooklyn, New York 11235-0003 (718) 934-4500 Fax (718) 332-4661 The Design Engineers Search Engine Provides ACTUAL Data Instantly at minicircuits.com

Notes: 1. Performance and quality attributes and conditions not expressly stated in this specification sheet are intended to be excluded and do not form a part of this specification sheet. 2. Electrical specifications and performance data contained herein are based on Mini-Circuit's applicable established test performance criteria and measurement instructions. 3. The parts covered by this specification sheet are subject to Mini-Circuits standard limited warranty and terms and conditions (collectively, "Standard Terms"); Purchasers of this part are entitled to the rights and benefits contained therein. For a full statement of the Standard Terms and the exclusive rights and remedies thereunder, please visit Mini-Circuits' website at www.minicircuits.com/MCLStore/terms.jsp.

REV. A
M98898
PSC-3-13-39
HY/TD/CP/AM
090826