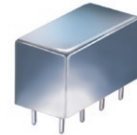


Plug-In

# Power Splitter/Combiner

**PSC-3-1-75+**  
**PSC-3-1-75**

3 Way-0° 75Ω 1 to 200 MHz



CASE STYLE: A01  
PRICE: \$28.20 ea. QTY. (1-9)

+ RoHS compliant in accordance with EU Directive (2002/95/EC)

The +Suffix identifies RoHS Compliance. See our web site for RoHS Compliance methodologies and qualifications.

## Maximum Ratings

Operating Temperature	-55°C to 100°C
Storage Temperature	-55°C to 100°C
Power Input (as a splitter)	1W max.
Internal Dissipation	0.375W max.
Permanent damage may occur if any of these limits are exceeded.	

## Pin Connections

SUM PORT	6
PORT 1	1
PORT 2	2
PORT 3	5
GROUND	3,4,7,8
CASE GROUND	3,4,7,8

## Features

- low insertion loss, 0.3 dB typ.
- high isolation, 35 dB typ.
- rugged welded construction

## Applications

- VHF
- FM & amateur radio
- federal & defense communication

## Electrical Specifications

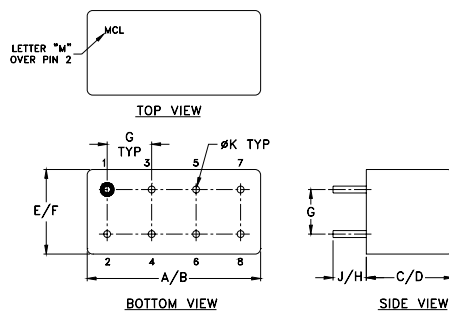
FREQ. RANGE (MHz)	ISOLATION (dB)						INSERTION LOSS (dB) ABOVE 4.8 dB						PHASE UNBALANCE (Degrees)			AMPLITUDE UNBALANCE (dB)		
	L		M		U		L		M		U		L	M	U	L	M	U
	Typ.	Min.	Typ.	Min.	Typ.	Min.	Typ.	Max.	Typ.	Max.	Typ.	Max.	Max.	Max.	Max.	Max.	Max.	Max.
$f_L$ - $f_U$																		
1-200	35	23	35	25	35	25	0.6	1.0	0.3	0.7	0.6	1.0	2.0	3.0	4.0	0.15	0.2	0.3

L = low range [ $f_L$  to  $10 f_L$ ] M = mid range [ $10 f_L$  to  $f_U/2$ ] U = upper range [ $f_U/2$  to  $f_U$ ]

## Typical Performance Data

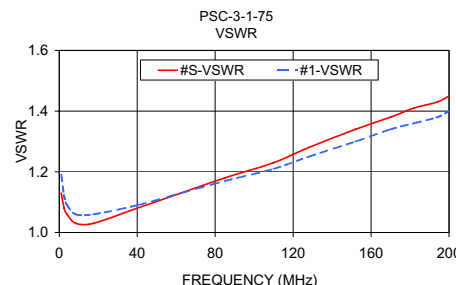
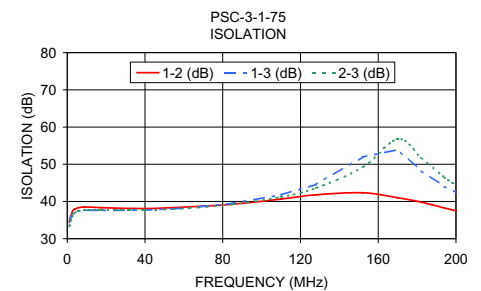
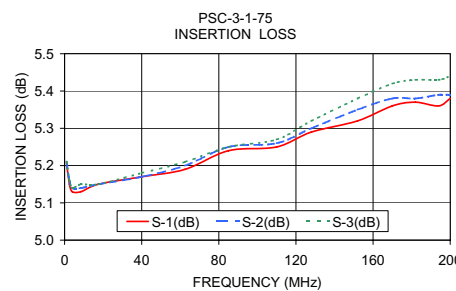
Freq. (MHz)	Insertion Loss (dB)			Amp. Unbal. (dB)	Isolation (dB)			Phase Unbal. (deg.)	VSWR S	VSWR 1	VSWR 2	VSWR 3
	S-1	S-2	S-3		1-2	1-3	2-3					
	1.00	5.21	5.21		5.21	0.00	34.73					
2.50	5.15	5.16	5.16	0.01	37.13	36.73	35.97	0.01	1.08	1.12	1.12	1.12
4.00	5.13	5.14	5.14	0.01	38.00	37.43	36.99	0.09	1.06	1.09	1.09	1.09
8.50	5.13	5.14	5.15	0.01	38.54	37.66	37.70	0.12	1.03	1.06	1.06	1.06
17.50	5.15	5.15	5.15	0.00	38.33	37.59	37.70	0.14	1.03	1.06	1.06	1.06
40.00	5.17	5.17	5.18	0.01	38.10	37.71	37.71	0.20	1.08	1.09	1.09	1.09
62.50	5.19	5.20	5.21	0.01	38.56	38.28	38.21	0.38	1.13	1.13	1.13	1.14
85.00	5.24	5.25	5.25	0.01	39.26	39.53	39.25	0.50	1.18	1.17	1.17	1.18
110.00	5.25	5.26	5.27	0.01	40.66	41.80	41.20	0.64	1.23	1.21	1.22	1.24
128.00	5.29	5.30	5.32	0.03	41.79	44.58	43.64	0.69	1.28	1.25	1.25	1.28
152.00	5.32	5.35	5.38	0.05	42.34	51.96	49.22	0.92	1.34	1.30	1.30	1.34
170.00	5.36	5.38	5.42	0.05	41.01	53.93	56.79	0.96	1.38	1.34	1.34	1.38
182.00	5.37	5.38	5.43	0.06	39.82	48.28	51.81	1.04	1.41	1.36	1.36	1.41
194.00	5.36	5.39	5.43	0.08	38.25	44.06	46.53	1.08	1.43	1.38	1.39	1.43
200.00	5.38	5.39	5.44	0.07	37.49	42.38	44.44	1.12	1.45	1.40	1.40	1.45

## Outline Drawing



## Outline Dimensions (inch/mm)

A	B	C	D	E	F
.770	.800	.385	.400	.370	.400
19.56	20.32	9.78	10.16	9.40	10.16
G	H	J	K	wt	
.200	.20	.14	.031	grams	
5.08	5.08	3.56	0.79	5.2	



## electrical schematic



**Mini-Circuits®**  
ISO 9001 ISO 14001 AS 9100 CERTIFIED  
The Design Engineers Search Engine Provides ACTUAL Data Instantly at [minicircuits.com](http://minicircuits.com)  
IFIRF MICROWAVE COMPONENTS

For detailed performance specs & shopping online see web site

P.O. Box 350166, Brooklyn, New York 11235-0003 (718) 934-4500 Fax (718) 332-4661

Notes: 1. Performance and quality attributes and conditions not expressly stated in this specification sheet are intended to be excluded and do not form a part of this specification sheet. 2. Electrical specifications and performance data contained herein are based on Mini-Circuit's applicable established test performance criteria and measurement instructions. 3. The parts covered by this specification sheet are subject to Mini-Circuits standard limited warranty and terms and conditions (collectively, "Standard Terms"); Purchasers of this part are entitled to the rights and benefits contained therein. For a full statement of the Standard Terms and the exclusive rights and remedies thereunder, please visit Mini-Circuits' website at [www.minicircuits.com/MCLStore/terms.jsp](http://www.minicircuits.com/MCLStore/terms.jsp).

REV. A  
M122594  
PSC-3-1-75  
HY/TD/CP/AM  
100513