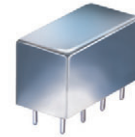


Plug-In

Power Splitter/Combiner

PSC-2-4+

2 Way-0° 50Ω 10 to 1000 MHz



CASE STYLE: A01
PRICE: \$28.20 ea. QTY. (1-9)

+ RoHS compliant in accordance with EU Directive (2002/95/EC)

The +Suffix has been added in order to identify RoHS Compliance. See our web site for RoHS Compliance methodologies and qualifications.

Maximum Ratings

Operating Temperature	-55°C to 100°C
Storage Temperature	-55°C to 100°C
Power Input (as a splitter)	1W max.
Internal Dissipation	0.125W max.

Permanent damage may occur if any of these limits are exceeded.

Pin Connections

SUM PORT	1
PORT 1	5
PORT 2	6
GROUND	2,3,4,7,8
CASE GROUND	2,3,4,7,8

Features

- very wideband, 10 to 1000 MHz
- low insertion loss, 0.6 dB typ.
- rugged welded construction

Applications

- cellular
- VHF/UHF
- federal & defense communications

Electrical Specifications

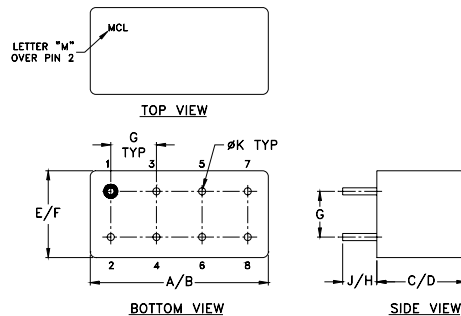
FREQ. RANGE (MHz)	ISOLATION (dB)						INSERTION LOSS (dB) ABOVE 3.0 dB						PHASE UNBALANCE (Degrees)			AMPLITUDE UNBALANCE (dB)		
	L		M		U		L		M		U		L	M	U	L	M	U
	Typ.	Min	Typ.	Min	Typ.	Min	Typ.	Max.	Typ.	Max.	Typ.	Max.	Max.	Max.	Max.	Max.	Max.	Max.
f_L - f_U																		
10-1000	30	25	25	20	25	20	0.6	1.0	0.6	1.2	0.7	1.3	2.0	4.0	8.0	0.15	0.2	0.4

L = low range [f_L to $10 f_L$] M = mid range [$10 f_L$ to $f_U/2$] U = upper range [$f_U/2$ to f_U]

Typical Performance Data

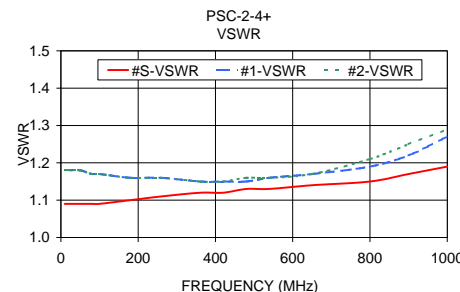
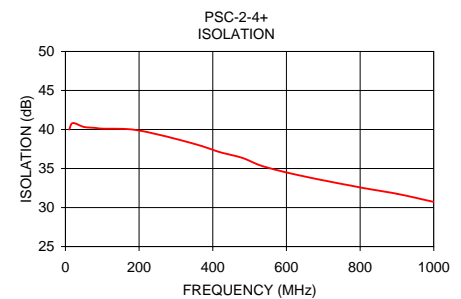
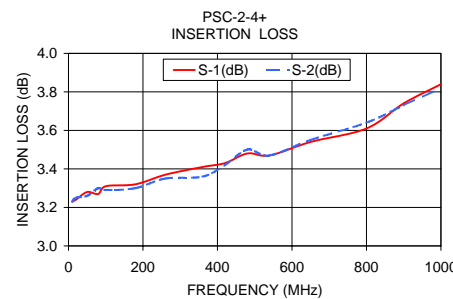
Frequency (MHz)	Insertion Loss (dB)		Amplitude Unbalance (dB)	Isolation (dB)	Phase Unbalance (deg.)	VSWR S	VSWR 1	VSWR 2
	S-1	S-2						
10.00	3.23	3.23	0.01	39.99	0.02	1.09	1.18	1.18
20.00	3.24	3.25	0.00	40.83	0.11	1.09	1.18	1.18
50.00	3.28	3.26	0.01	40.33	0.12	1.09	1.18	1.18
80.00	3.27	3.30	0.04	40.21	0.03	1.09	1.17	1.17
100.00	3.31	3.29	0.02	40.11	0.06	1.09	1.17	1.17
180.00	3.32	3.30	0.01	40.01	0.05	1.10	1.16	1.16
260.00	3.37	3.35	0.01	39.26	0.01	1.11	1.16	1.16
360.00	3.41	3.36	0.05	38.02	0.14	1.12	1.15	1.15
420.00	3.43	3.42	0.01	37.09	0.21	1.12	1.15	1.15
480.00	3.48	3.50	0.02	36.36	0.19	1.13	1.15	1.16
540.00	3.47	3.47	0.00	35.23	0.32	1.13	1.16	1.16
650.00	3.54	3.55	0.01	33.97	0.22	1.14	1.17	1.17
800.00	3.61	3.64	0.03	32.58	0.35	1.15	1.19	1.21
900.00	3.74	3.73	0.01	31.76	0.35	1.17	1.22	1.25
1000.00	3.84	3.82	0.02	30.72	0.53	1.19	1.27	1.29

Outline Drawing



Outline Dimensions (inch/mm)

A	B	C	D	E	F
.770	.800	.385	.400	.370	.400
19.56	20.32	9.78	10.16	9.40	10.16
G	H	J	K	wt	
.200	.20	.14	.031	grams	
5.08	5.08	3.56	0.79	5.2	



electrical schematic



Mini-Circuits®
ISO 9001 ISO 14001 AS 9100 CERTIFIED
IFIRF MICROWAVE COMPONENTS

For detailed performance specs & shopping online see web site

P.O. Box 350166, Brooklyn, New York 11235-0003 (718) 934-4500 Fax (718) 332-4661 The Design Engineers Search Engine Provides ACTUAL Data Instantly at minicircuits.com

Notes: 1. Performance and quality attributes and conditions not expressly stated in this specification sheet are intended to be excluded and do not form a part of this specification sheet. 2. Electrical specifications and performance data contained herein are based on Mini-Circuit's applicable established test performance criteria and measurement instructions. 3. The parts covered by this specification sheet are subject to Mini-Circuits standard limited warranty and terms and conditions (collectively, "Standard Terms"); Purchasers of this part are entitled to the rights and benefits contained therein. For a full statement of the Standard Terms and the exclusive rights and remedies thereunder, please visit Mini-Circuits' website at www.minicircuits.com/MCLStore/terms.jsp.

REV. B
M113397
PSC-2-4+
HY/TP/CP/JAM
090824