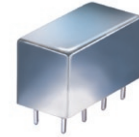


Plug-In

Power Splitter/Combiner

PSC-2-1+

2 Way-0° 50Ω 0.1 to 400 MHz



CASE STYLE: A01
PRICE: \$14.20 ea. QTY. (1-9)

Maximum Ratings

| | |
|-----------------------------|----------------|
| Operating Temperature | -55°C to 100°C |
| Storage Temperature | -55°C to 100°C |
| Power Input (as a splitter) | 1W max. |
| Internal Dissipation | 0.125W max. |

Permanent damage may occur if any of these limits are exceeded.

Pin Connections

| | |
|-------------|-----------|
| SUM PORT | 1 |
| PORT 1 | 5 |
| PORT 2 | 6 |
| GROUND | 2,3,4,7,8 |
| CASE GROUND | 2,3,4,7,8 |

Features

- wideband, 0.1 to 400 MHz
- low insertion loss, 0.4 dB typ.
- rugged welded construction

Applications

- VHF/UHF
- federal & defense communications

+ RoHS compliant in accordance with EU Directive (2002/95/EC)

The +Suffix has been added in order to identify RoHS Compliance. See our web site for RoHS Compliance methodologies and qualifications.

Electrical Specifications

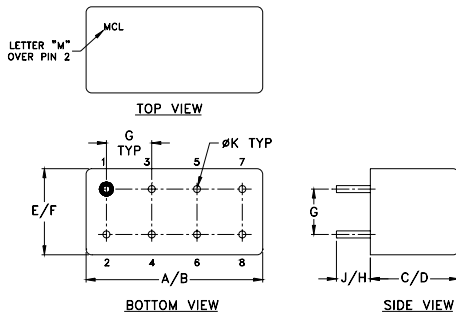
| FREQ. RANGE (MHz) | ISOLATION (dB) | | | | | | INSERTION LOSS (dB) ABOVE 3.0 dB | | | | | | PHASE UNBALANCE (Degrees) | | | AMPLITUDE UNBALANCE (dB) | | |
|-------------------|----------------|-----|------|-----|------|-----|----------------------------------|------|------|------|------|------|---------------------------|------|------|--------------------------|------|------|
| | L | | M | | U | | L | | M | | U | | L | M | U | L | M | U |
| | Typ. | Min | Typ. | Min | Typ. | Min | Typ. | Max. | Typ. | Max. | Typ. | Max. | Max. | Max. | Max. | Max. | Max. | Max. |
| f_L - f_U | | | | | | | | | | | | | | | | | | |
| 0.1-400 | 20 | 15 | 25 | 20 | 25 | 20 | 0.2 | 0.6 | 0.4 | 0.75 | 0.6 | 1.0 | 2.0 | 3.0 | 4.0 | 0.15 | 0.2 | 0.3 |

L = low range [f_L to $10 f_L$] M = mid range [$10 f_L$ to $f_U/2$] U = upper range [$f_U/2$ to f_U]

Typical Performance Data

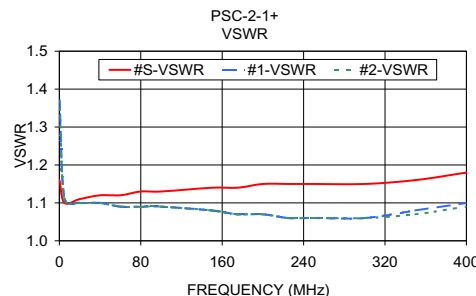
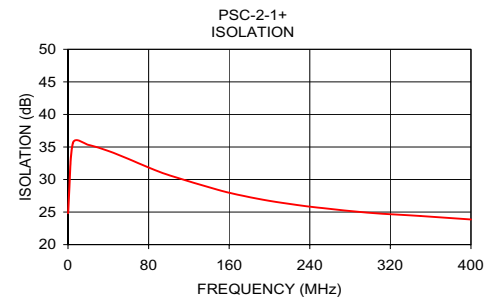
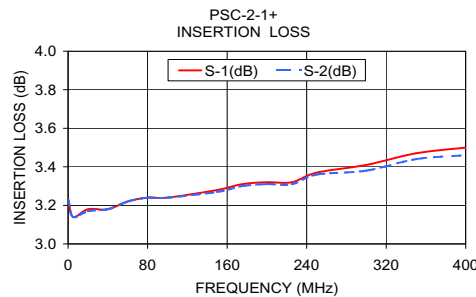
| Frequency (MHz) | Insertion Loss (dB) | | Amplitude Unbalance (dB) | Isolation (dB) | Phase Unbalance (deg.) | VSWR S | VSWR 1 | VSWR 2 |
|-----------------|---------------------|------|--------------------------|----------------|------------------------|--------|--------|--------|
| | S-1 | S-2 | | | | | | |
| 0.10 | 3.23 | 3.23 | 0.00 | 24.82 | 0.01 | 1.16 | 1.37 | 1.37 |
| 5.00 | 3.14 | 3.14 | 0.00 | 35.64 | 0.01 | 1.10 | 1.11 | 1.11 |
| 20.00 | 3.18 | 3.17 | 0.00 | 35.33 | 0.03 | 1.11 | 1.10 | 1.10 |
| 40.00 | 3.18 | 3.18 | 0.00 | 34.39 | 0.02 | 1.12 | 1.10 | 1.10 |
| 60.00 | 3.22 | 3.22 | 0.00 | 33.16 | 0.02 | 1.12 | 1.09 | 1.09 |
| 80.00 | 3.24 | 3.24 | 0.00 | 31.85 | 0.04 | 1.13 | 1.09 | 1.09 |
| 100.00 | 3.24 | 3.24 | 0.00 | 30.68 | 0.05 | 1.13 | 1.09 | 1.09 |
| 150.00 | 3.28 | 3.27 | 0.00 | 28.37 | 0.04 | 1.14 | 1.08 | 1.08 |
| 175.00 | 3.31 | 3.30 | 0.01 | 27.46 | 0.07 | 1.14 | 1.07 | 1.07 |
| 200.00 | 3.32 | 3.31 | 0.01 | 26.72 | 0.05 | 1.15 | 1.07 | 1.07 |
| 225.00 | 3.32 | 3.31 | 0.01 | 26.14 | 0.02 | 1.15 | 1.06 | 1.06 |
| 250.00 | 3.37 | 3.36 | 0.01 | 25.65 | 0.05 | 1.15 | 1.06 | 1.06 |
| 300.00 | 3.41 | 3.38 | 0.03 | 24.88 | 0.10 | 1.15 | 1.06 | 1.06 |
| 350.00 | 3.47 | 3.44 | 0.03 | 24.40 | 0.06 | 1.16 | 1.08 | 1.07 |
| 400.00 | 3.50 | 3.46 | 0.04 | 23.86 | 0.05 | 1.18 | 1.10 | 1.09 |

Outline Drawing



Outline Dimensions (inch/mm)

| A | B | C | D | E | F |
|-------|-------|------|-------|-------|-------|
| .770 | .800 | .385 | .400 | .370 | .400 |
| 19.56 | 20.32 | 9.78 | 10.16 | 9.40 | 10.16 |
| G | H | J | K | wt | |
| .200 | .20 | .14 | .031 | grams | |
| 5.08 | 5.08 | 3.56 | 0.79 | 5.2 | |



electrical schematic



For detailed performance specs & shopping online see web site

P.O. Box 350166, Brooklyn, New York 11235-0003 (718) 934-4500 Fax (718) 332-4661 The Design Engineers Search Engine Provides ACTUAL Data Instantly at minicircuits.com

Notes: 1. Performance and quality attributes and conditions not expressly stated in this specification sheet are intended to be excluded and do not form a part of this specification sheet. 2. Electrical specifications and performance data contained herein are based on Mini-Circuit's applicable established test performance criteria and measurement instructions. 3. The parts covered by this specification sheet are subject to Mini-Circuits standard limited warranty and terms and conditions (collectively, "Standard Terms"); Purchasers of this part are entitled to the rights and benefits contained therein. For a full statement of the Standard Terms and the exclusive rights and remedies thereunder, please visit Mini-Circuits' website at www.minicircuits.com/MCLStore/terms.jsp.

REV. B
M121747
PSC-2-1+
HY/TD/CP
100126