

# Low Pass Filter

## PLP-70-75+

75Ω DC to 60 MHz

### Maximum Ratings

Operating Temperature	-55°C to 100°C
Storage Temperature	-55°C to 100°C
RF Power Input	0.5W max.

### Pin Connections

INPUT	1
OUTPUT	8
GROUND	2,3,4,5,6,7
CASE GROUND	2,3,4,5,6,7

### Features

- rugged welded case, hermetic
- other standard and custom PLP models available with wide selection of fco

### Application

- test equipment
- lab use
- transmitters / receivers
- military / hi-rel applications



CASE STYLE: A01  
PRICE: \$15.20 ea. QTY (1-9)

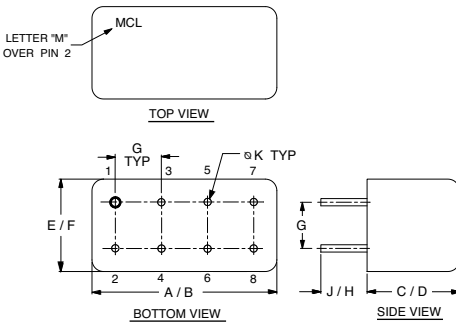
**+ RoHS compliant in accordance with EU Directive (2002/95/EC)**

*The +Suffix has been added in order to identify RoHS Compliance. See our web site for RoHS Compliance methodologies and qualifications.*

### Low Pass Filter Electrical Specifications

PASSBAND (MHz)	fco, MHz Nom.	STOPBAND (MHz)		VSWR (:1)	
		(Loss > 20dB)	(Loss > 40dB)	Passband Typ.	Stopband Typ.
DC - 60	67	90 - 117	117 - 300	1.7	18

### Outline Drawing



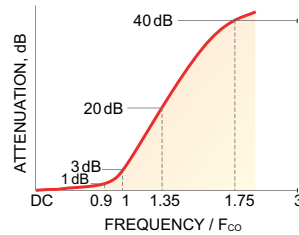
### Outline Dimensions (inch/mm)

A	B	C	D	E	F
.770	.800	.385	.400	.370	.400
19.56	20.32	9.78	10.16	9.40	10.16

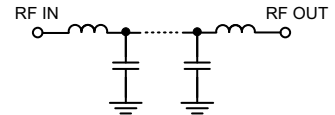
  

G	H	J	K	wt
.200	.20	.14	.031	grams
5.08	5.08	3.56	0.79	5.2

### typical frequency response

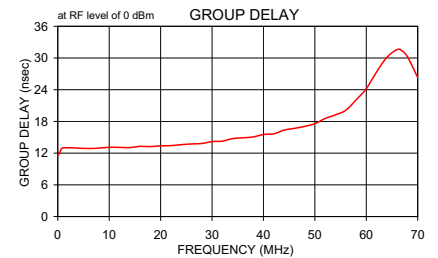
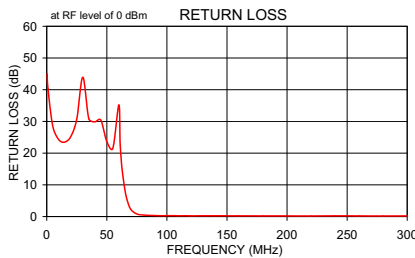
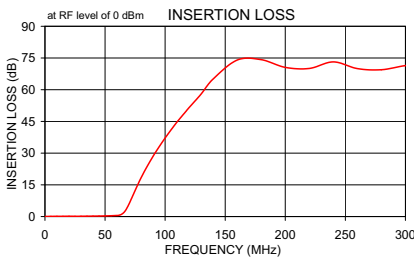


### functional schematic



### Typical Performance Data

Frequency (MHz)	Insertion Loss (dB)		Return Loss (dB)	Frequency (MHz)	Group Delay (nsec)
	$\bar{x}$	$\sigma$			
0.3	0.03	0.01	45.0	0.03	11.61
20.0	0.14	0.01	25.2	0.10	11.65
30.0	0.15	0.02	43.9	0.50	12.30
40.0	0.21	0.01	29.9	1.00	13.01
50.0	0.30	0.04	23.7	5.00	12.91
60.0	0.51	0.01	35.2	10.00	13.10
65.0	1.57	0.07	8.6	14.00	13.05
67.0	2.88	0.12	5.1	18.00	13.25
70.0	5.97	0.25	2.3	20.00	13.38
73.0	9.70	0.38	1.2	24.00	13.60
78.0	15.96	0.49	0.6	28.00	13.83
90.0	28.56	0.59	0.3	30.00	14.18
100.0	37.15	0.60	0.3	34.00	14.75
117.0	49.54	0.82	0.3	40.00	15.52
130.0	57.97	1.05	0.3	44.00	16.36
150.0	72.42	5.81	0.2	50.00	17.58
200.0	70.56	4.01	0.2	54.00	19.24
230.0	72.86	4.55	0.2	60.00	24.20
250.0	71.15	4.01	0.2	64.00	30.11
280.0	69.45	3.26	0.2	67.00	31.33
300.0	71.40	3.31	0.2	70.00	26.32



P.O. Box 350166, Brooklyn, New York 11235-0003 (718) 934-4500 Fax (718) 332-4661 For detailed performance specs & shopping online see Mini-Circuits web site



The Design Engineers Search Engine Provides ACTUAL Data Instantly From MINI-CIRCUITS At: [www.minicircuits.com](http://www.minicircuits.com)

RF/IF MICROWAVE COMPONENTS

REV. OR  
M108739  
EDR-7645/1U  
PLP-70-75+  
URJ/RAV  
071108  
page 1 of 1