

Plug-In Low Pass Filter

PLP-300+

50Ω DC to 270 MHz

Maximum Ratings

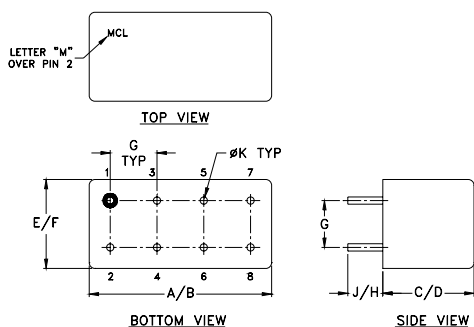
| | |
|-----------------------|----------------|
| Operating Temperature | -55°C to 100°C |
| Storage Temperature | -55°C to 100°C |
| RF Power Input | 0.5W max. |

Permanent damage may occur if any of these limits are exceeded.

Pin Connections

| | |
|-------------|-------------|
| INPUT | 1 |
| OUTPUT | 8 |
| GROUND | 2,3,4,5,6,7 |
| CASE GROUND | 2,3,4,5,6,7 |

Outline Drawing



Outline Dimensions (inch/mm)

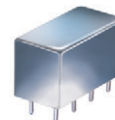
| A | B | C | D | E | F |
|-------|-------|------|-------|-------|-------|
| .770 | .800 | .385 | .400 | .370 | .400 |
| 19.56 | 20.32 | 9.78 | 10.16 | 9.40 | 10.16 |
| G | H | J | K | wt | |
| .200 | .20 | .14 | .031 | grams | |
| 5.08 | 5.08 | 3.56 | 0.79 | 5.2 | |

Features

- rugged welded case, hermetic
- other standard and custom PLP models available with wide selection of fco

Applications

- test equipment
- lab use
- transmitters/receivers
- military/hi-rel applications



CASE STYLE: A01
PRICE: \$13.70 ea. QTY (1-9)

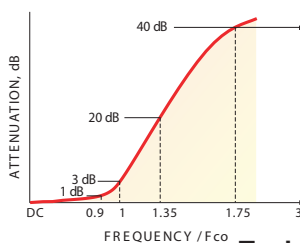
+ RoHS compliant in accordance with EU Directive (2002/95/EC)

The +Suffix has been added in order to identify RoHS Compliance. See our web site for RoHS Compliance methodologies and qualifications.

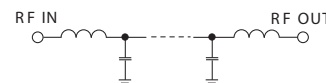
Low Pass Filter Electrical Specifications

| PASSBAND (MHz) | fco (MHz) Nom. | STOPBAND (MHz) | | VSWR (:1) | |
|----------------|----------------|----------------|----------------|---------------|---------------|
| | | (loss > 20 dB) | (loss > 40 dB) | Passband Typ. | Stopband Typ. |
| DC-270 | 297 | 410-550 | 550-1200 | 1.7 | 18 |

typical frequency response

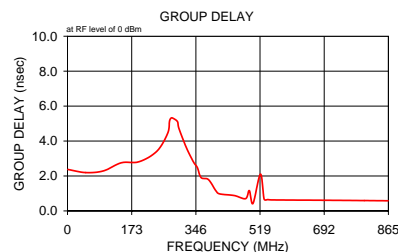
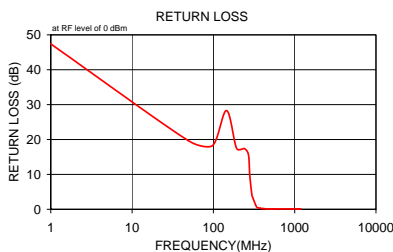
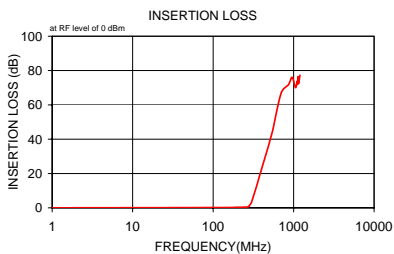


electrical schematic



Typical Performance Data

| Frequency (MHz) | Insertion Loss (dB) | | Return Loss (dB) | Frequency (MHz) | Group Delay (nsec) |
|-----------------|---------------------|----------|------------------|-----------------|--------------------|
| | \bar{x} | σ | | | |
| 1.00 | 0.02 | 0.1 | 47.4 | 1.00 | 2.37 |
| 49.00 | 0.13 | 0.1 | 19.7 | 49.00 | 2.20 |
| 97.00 | 0.17 | 0.1 | 18.2 | 97.00 | 2.29 |
| 145.00 | 0.15 | 0.1 | 28.3 | 145.00 | 2.76 |
| 193.00 | 0.28 | 0.1 | 17.5 | 193.00 | 2.82 |
| 241.00 | 0.36 | 0.1 | 17.4 | 241.00 | 3.42 |
| 270.00 | 0.53 | 0.1 | 15.6 | 270.00 | 4.45 |
| 280.00 | 1.00 | 0.1 | 9.8 | 275.00 | 5.14 |
| 297.00 | 2.83 | 0.2 | 4.3 | 280.00 | 5.33 |
| 300.00 | 3.29 | 0.2 | 3.8 | 290.00 | 5.24 |
| 340.00 | 11.27 | 0.3 | 0.7 | 297.00 | 5.08 |
| 360.00 | 15.31 | 0.3 | 0.4 | 300.00 | 5.24 |
| 380.00 | 19.09 | 0.4 | 0.3 | 320.00 | 3.64 |
| 400.00 | 22.62 | 0.4 | 0.2 | 340.00 | 2.79 |
| 410.00 | 24.31 | 0.4 | 0.2 | 350.00 | 2.49 |
| 450.00 | 30.64 | 0.6 | 0.1 | 360.00 | 1.91 |
| 490.00 | 36.51 | 0.9 | 0.1 | 380.00 | 1.79 |
| 520.00 | 40.88 | 1.2 | 0.1 | 400.00 | 1.15 |
| 530.00 | 42.34 | 1.3 | 0.1 | 410.00 | 0.98 |
| 540.00 | 43.72 | 1.3 | 0.1 | 450.00 | 0.88 |
| 550.00 | 45.07 | 1.5 | 0.1 | 480.00 | 0.70 |
| 700.00 | 66.82 | 5.7 | 0.1 | 490.00 | 1.16 |
| 864.00 | 71.78 | 6.6 | 0.1 | 500.00 | 0.43 |
| 960.00 | 76.06 | 6.9 | 0.1 | 520.00 | 2.11 |
| 1056.00 | 70.05 | 3.2 | 0.1 | 530.00 | 0.67 |
| 1110.00 | 73.87 | 7.7 | 0.1 | 540.00 | 0.65 |
| 1120.00 | 72.31 | 5.1 | 0.1 | 550.00 | 0.63 |
| 1140.00 | 76.33 | 5.1 | 0.1 | 700.00 | 0.61 |
| 1150.00 | 72.33 | 3.5 | 0.1 | 800.00 | 0.59 |
| 1200.00 | 77.29 | 5.8 | 0.1 | 864.00 | 0.58 |



Mini-Circuits
ISO 9001 ISO 14001 AS 9100 CERTIFIED

P.O. Box 350166, Brooklyn, New York 11235-0003 (718) 934-4500 Fax (718) 332-4661 The Design Engineers Search Engine Provides ACTUAL Data Instantly at minicircuits.com

IF/RF MICROWAVE COMPONENTS

For detailed performance specs & shopping online see web site

Notes: 1. Performance and quality attributes and conditions not expressly stated in this specification sheet are intended to be excluded and do not form a part of this specification sheet. 2. Electrical specifications and performance data contained herein are based on Mini-Circuit's applicable established test performance criteria and measurement instructions. 3. The parts covered by this specification sheet are subject to Mini-Circuits standard limited warranty and terms and conditions (collectively, "Standard Terms"); Purchasers of this part are entitled to the rights and benefits contained therein. For a full statement of the Standard Terms and the exclusive rights and remedies thereunder, please visit Mini-Circuits' website at www.minicircuits.com/MCLStore/terms.jsp.

REV. A
M113397
PLP-300+
090820