

Plug-In Low Pass Filter

PLP-1000+ PLP-1000

50Ω DC to 900 MHz

Maximum Ratings

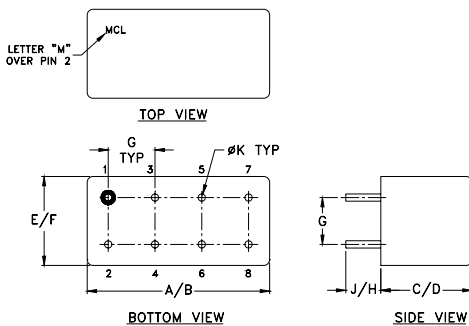
| | |
|-----------------------|----------------|
| Operating Temperature | -55°C to 100°C |
| Storage Temperature | -55°C to 100°C |
| RF Power Input | 0.5W max. |

Permanent damage may occur if any of these limits are exceeded.

Pin Connections

| | |
|-------------|-------------|
| INPUT | 1 |
| OUTPUT | 8 |
| GROUND | 2,3,4,5,6,7 |
| CASE GROUND | 2,3,4,5,6,7 |

Outline Drawing



Outline Dimensions (inch/mm)

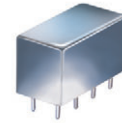
| A | B | C | D | E | F |
|-------|-------|------|-------|-------|-------|
| .770 | .800 | .385 | .400 | .370 | .400 |
| 19.56 | 20.32 | 9.78 | 10.16 | 9.40 | 10.16 |
| G | H | J | K | wt | |
| .200 | .20 | .14 | .031 | grams | |
| 5.08 | 5.08 | 3.56 | 0.79 | 5.2 | |

Features

- rugged welded case, hermetic
- other standard and custom PLP models available with wide selection of fco

Applications

- test equipment
- lab use
- transmitters/receivers
- military/hi-rel applications



CASE STYLE: A01
PRICE: \$13.70 ea. QTY (1-9)

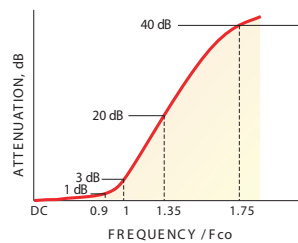
+ RoHS compliant in accordance with EU Directive (2002/95/EC)

The +Suffix identifies RoHS Compliance. See our web site for RoHS Compliance methodologies and qualifications.

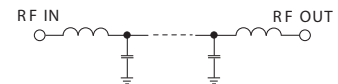
Low Pass Filter Electrical Specifications

| PASSBAND (MHz) | fco (MHz) Nom. | STOPBAND (MHz) | | VSWR (:1) | |
|----------------|----------------|----------------|----------------|---------------|---------------|
| | | (loss > 20 dB) | (loss > 40 dB) | Passband Typ. | Stopband Typ. |
| DC-900 | 990 | 1340-1750 | 1750-2000 | 1.7 | 18 |

typical frequency response

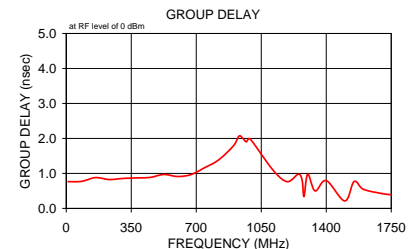
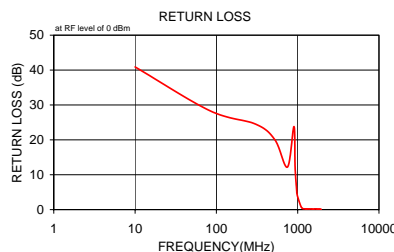


electrical schematic



Typical Performance Data

| Frequency (MHz) | Insertion Loss (dB) | | Return Loss (dB) | Frequency (MHz) | Group Delay (nsec) |
|-----------------|---------------------|----------|------------------|-----------------|--------------------|
| | \bar{x} | σ | | | |
| 10.00 | 0.01 | 0.0 | 40.9 | 10.00 | 0.77 |
| 82.50 | 0.02 | 0.0 | 28.4 | 82.50 | 0.77 |
| 305.00 | 0.07 | 0.1 | 24.5 | 157.50 | 0.88 |
| 525.00 | 0.17 | 0.1 | 20.0 | 230.00 | 0.83 |
| 747.50 | 0.54 | 0.1 | 12.2 | 305.00 | 0.86 |
| 900.00 | 0.40 | 0.1 | 23.8 | 377.50 | 0.87 |
| 930.00 | 0.75 | 0.1 | 12.4 | 452.50 | 0.89 |
| 970.00 | 2.06 | 0.2 | 5.9 | 525.00 | 0.97 |
| 990.00 | 3.10 | 0.2 | 4.1 | 600.00 | 0.91 |
| 1115.00 | 12.75 | 0.5 | 0.6 | 672.50 | 0.97 |
| 1250.00 | 23.28 | 0.7 | 0.2 | 747.50 | 1.17 |
| 1270.00 | 24.76 | 0.8 | 0.2 | 820.00 | 1.39 |
| 1280.00 | 25.53 | 0.8 | 0.2 | 900.00 | 1.79 |
| 1300.00 | 27.07 | 0.9 | 0.2 | 930.00 | 2.07 |
| 1340.00 | 30.19 | 1.0 | 0.2 | 950.00 | 2.01 |
| 1400.00 | 34.90 | 1.2 | 0.2 | 970.00 | 1.90 |
| 1500.00 | 43.32 | 1.8 | 0.2 | 990.00 | 1.99 |
| 1550.00 | 48.04 | 2.6 | 0.1 | 1115.00 | 1.08 |
| 1600.00 | 53.09 | 3.9 | 0.2 | 1190.00 | 0.76 |
| 1700.00 | 61.90 | 8.3 | 0.2 | 1250.00 | 0.98 |
| 1750.00 | 58.54 | 3.6 | 0.1 | 1270.00 | 0.81 |
| 1760.06 | 58.62 | 6.4 | 0.1 | 1280.00 | 0.34 |
| 1790.00 | 57.18 | 2.8 | 0.1 | 1300.00 | 0.98 |
| 1800.00 | 56.81 | 1.9 | 0.1 | 1340.00 | 0.50 |
| 1820.00 | 55.81 | 3.2 | 0.1 | 1400.00 | 0.80 |
| 1850.00 | 54.77 | 2.3 | 0.1 | 1500.00 | 0.21 |
| 1860.00 | 53.85 | 1.3 | 0.1 | 1550.00 | 0.77 |
| 1880.00 | 53.19 | 1.8 | 0.1 | 1600.00 | 0.55 |
| 1900.05 | 52.56 | 1.6 | 0.1 | 1700.00 | 0.43 |
| 1950.00 | 50.28 | 1.1 | 0.1 | 1750.00 | 0.39 |



Mini-Circuits
ISO 9001 ISO 14001 AS 9100 CERTIFIED

P.O. Box 350166, Brooklyn, New York 11235-0003 (718) 934-4500 Fax (718) 332-4661 The Design Engineers Search Engine Provides ACTUAL Data Instantly at minicircuits.com

IF/RF MICROWAVE COMPONENTS

For detailed performance specs & shopping online see web site

Notes: 1. Performance and quality attributes and conditions not expressly stated in this specification sheet are intended to be excluded and do not form a part of this specification sheet. 2. Electrical specifications and performance data contained herein are based on Mini-Circuit's applicable established test performance criteria and measurement instructions. 3. The parts covered by this specification sheet are subject to Mini-Circuits standard limited warranty and terms and conditions (collectively, "Standard Terms"); Purchasers of this part are entitled to the rights and benefits contained therein. For a full statement of the Standard Terms and the exclusive rights and remedies thereunder, please visit Mini-Circuits' website at www.minicircuits.com/MCLStore/terms.jsp.

REV. OR
M95291
PLP-1000
090820