

# Low Pass Filter

## PLP-100-75

75Ω DC to 98 MHz

### Maximum Ratings

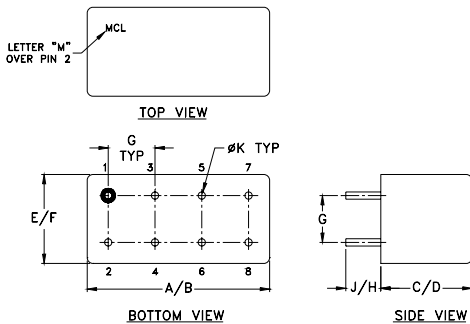
Operating Temperature	-55°C to 100°C
Storage Temperature	-55°C to 100°C
RF Power Input	0.5W max.

Permanent damage may occur if any of these limits are exceeded.

### Pin Connections

INPUT	1
OUTPUT	8
GROUND	2,3,4,5,6,7
CASE GROUND	2,3,4,5,6,7

### Outline Drawing



### Outline Dimensions (inch/mm)

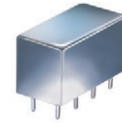
A	B	C	D	E	F
.770	.800	.385	.400	.370	.400
19.56	20.32	9.78	10.16	9.40	10.16
G	H	J	K	wt	
.20	.20	.14	.031	grams	
5.08	5.08	3.56	0.79	5.2	

### Features

- rugged welded case, hermetic
- other standard and custom PLP models available with wide selection of fco

### Applications

- test equipment
- lab use
- transmitters/receivers
- military/hi-rel applications



CASE STYLE: A01  
PRICE: \$15.20 ea. QTY (1-9)

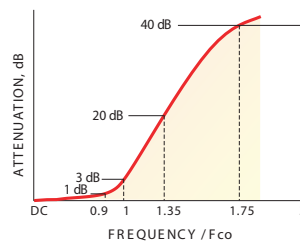
+ RoHS compliant in accordance with EU Directive (2002/95/EC)

The +Suffix identifies RoHS Compliance. See our web site for RoHS Compliance methodologies and qualifications.

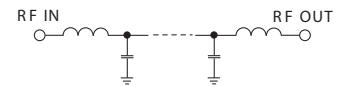
### Low Pass Filter Electrical Specifications

PASSBAND (MHz)	fco (MHz) Nom.	STOPBAND (MHz)		VSWR (:1)	
		(loss > 20 dB)	(loss > 40 dB)	Passband Typ.	Stopband Typ.
DC-98	108	146-189	189-400	1.7	18

### typical frequency response

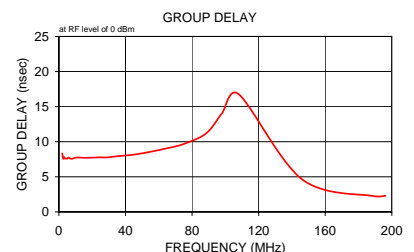
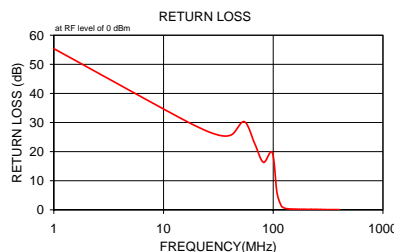


### electrical schematic



### Typical Performance Data

Frequency (MHz)	Insertion Loss (dB)		Return Loss (dB)	Frequency (MHz)	Group Delay (nsec)
	$\bar{x}$	$\sigma$			
1.00	1.00	0.00	55.39	2.00	8.34
14.40	0.09	0.00	31.44	2.34	7.84
27.80	0.14	0.00	26.34	2.73	7.56
41.10	0.18	0.01	25.69	3.19	7.79
54.50	0.22	0.01	30.30	3.72	7.62
67.90	0.29	0.01	22.73	4.34	7.59
81.30	0.45	0.04	16.35	5.07	7.61
98.00	0.62	0.07	19.63	5.91	7.74
108.00	2.25	0.40	6.07	6.90	7.59
118.00	7.71	0.73	1.47	8.05	7.58
123.60	11.47	0.75	0.78	9.39	7.69
129.20	15.15	0.72	0.50	10.96	7.75
134.80	18.64	0.71	0.37	12.94	7.74
140.40	21.90	0.69	0.30	15.10	7.71
146.00	24.97	0.68	0.26	17.83	7.72
151.60	27.86	0.69	0.23	20.81	7.74
159.10	31.52	0.70	0.21	24.57	7.77
166.60	34.94	0.73	0.19	28.67	7.76
174.00	38.15	0.75	0.18	33.85	7.90
181.50	41.21	0.85	0.18	39.50	8.02
189.00	44.21	0.98	0.17	46.64	8.21
196.50	47.04	1.03	0.17	54.43	8.54
221.90	56.41	1.79	0.16	64.27	9.03
247.40	67.24	4.43	0.14	75.00	9.68
272.80	77.49	6.61	0.11	88.56	11.21
298.30	75.88	6.64	0.10	98.00	14.05
323.70	73.99	6.37	0.08	108.00	16.77
349.10	71.06	5.19	0.08	146.00	4.66
374.60	69.94	3.57	0.08	189.00	2.25
403.00	65.59	2.49	0.08	196.20	2.29



P.O. Box 350166, Brooklyn, New York 11235-0003 (718) 934-4500 Fax (718) 332-4661 The Design Engineers Search Engine Provides ACTUAL Data Instantly at [minicircuits.com](http://minicircuits.com)

IF/RF MICROWAVE COMPONENTS

For detailed performance specs & shopping online see web site

Notes: 1. Performance and quality attributes and conditions not expressly stated in this specification sheet are intended to be excluded and do not form a part of this specification sheet. 2. Electrical specifications and performance data contained herein are based on Mini-Circuits' applicable established test performance criteria and measurement instructions. 3. The parts covered by this specification sheet are subject to Mini-Circuits standard limited warranty and terms and conditions (collectively, "Standard Terms"); Purchasers of this part are entitled to the rights and benefits contained therein. For a full statement of the Standard Terms and the exclusive rights and remedies thereunder, please visit Mini-Circuits' website at [www.minicircuits.com/MCLStore/terms.jsp](http://www.minicircuits.com/MCLStore/terms.jsp).

REV. A  
M98898  
PLP-100-75  
090820