

Plug-In

Bandpass Filter

50Ω Constant Impedance 58 to 82 MHz

Maximum Ratings

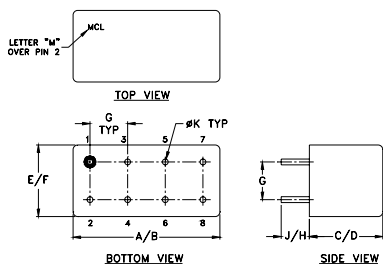
Operating Temperature	-55°C to 100°C
Storage Temperature	-55°C to 100°C
RF Power Input	0.5W max.

Permanent damage may occur if any of these limits are exceeded.

Pin Connections

INPUT	1
OUTPUT	6
GROUND	2,3,4,5,7,8
CASE GROUND	2,5,7,8

Outline Drawing



Outline Dimensions (inch/mm)

A	B	C	D	E	F
.770	.800	.385	.400	.370	.400
19.56	20.32	9.78	10.16	9.40	10.16
G	H	J	K		wt
.200	.20	.14	.031		grams
5.08	5.08	3.56	0.79		5.2

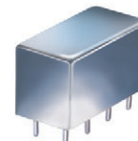
Features

- low VSWR in pass & stopbands, 1.3:1 typ.
- shielded welded case, hermetically sealed
- custom designs available

Applications

- harmonic rejection
- lab use
- military/hi-rel applications

PIF-70+



CASE STYLE: A01
PRICE: \$17.20 ea. QTY: 1-9

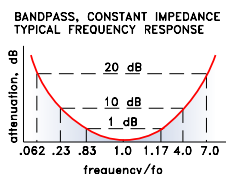
+ RoHS compliant in accordance with EU Directive (2002/95/EC)

The +Suffix has been added in order to identify RoHS Compliance. See our web site for RoHS Compliance methodologies and qualifications.

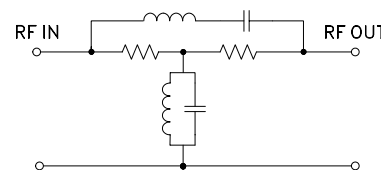
Bandpass Filter Electrical Specifications

MODEL NO.	CENTER FREQ. (MHz)	PASSBAND (MHz) (loss < 1 dB)	STOPBANDS		VSWR, 1.3:1 Typ. TOTAL BAND (MHz)
			(loss > 10 dB) at MHz	(loss > 20 dB) at MHz	
PIF-70+	70	58-82	16 & 280	4.4 & 490	DC-550

typical frequency response

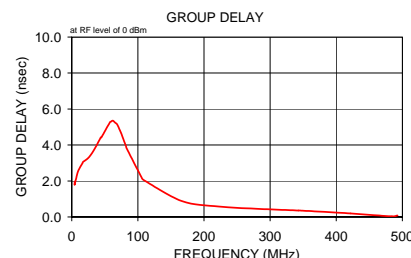
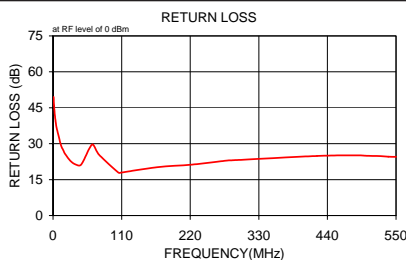
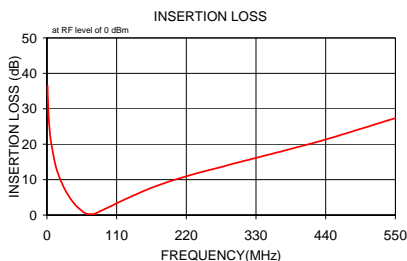


electrical schematic



Typical Performance Data

Frequency (MHz)	Insertion Loss (dB)		Return Loss (dB)	Frequency (MHz)	Group Delay (nsec)
	\bar{x}	σ			
1.0	36.56	0.2	49.5	4.4	1.965
1.7	32.08	0.2	45.9	4.5	1.803
2.4	29.16	0.2	43.7	8.4	2.416
3.0	27.01	0.2	41.6	12.2	2.736
3.7	25.26	0.2	40.1	16.1	2.984
4.4	23.82	0.2	38.7	17.0	3.059
6.0	21.13	0.2	36.2	26.2	3.326
12.7	14.61	0.2	29.4	35.1	3.817
16.0	12.53	0.2	27.5	43.9	4.422
20.0	10.51	0.2	25.5	44.7	4.419
28.3	7.27	0.2	22.7	57.9	5.270
36.7	4.76	0.2	21.3	58.9	5.288
45.0	2.79	0.1	21.3	62.0	5.357
58.0	0.77	0.1	27.9	65.3	5.248
63.7	0.34	0.1	29.7	68.8	5.146
70.0	0.24	0.1	26.9	72.4	4.843
74.7	0.35	0.1	25.1	75.0	4.639
105.0	2.87	0.1	17.9	79.0	4.231
110.0	3.34	0.2	18.0	81.8	3.959
166.7	7.80	0.2	20.2	83.2	3.803
223.3	11.10	0.2	21.3	105.9	2.168
280.0	13.80	0.3	23.0	107.8	2.082
290.0	14.28	0.3	23.1	166.0	0.886
423.3	20.50	0.9	24.9	222.6	0.581
490.0	24.04	1.4	25.1	278.6	0.458
500.0	24.60	1.5	25.0	342.8	0.360
512.5	25.30	1.5	24.9	348.7	0.351
525.0	25.98	1.6	24.8	421.7	0.199
537.5	26.70	1.6	24.6	484.2	0.031
550.0	27.34	1.4	24.5	492.6	0.079



Mini-Circuits
ISO 9001 ISO 14001 AS 9100 CERTIFIED

P.O. Box 350166, Brooklyn, New York 11235-0003 (718) 934-4500 Fax (718) 332-4661 The Design Engineers Search Engine Provides ACTUAL Data Instantly at minicircuits.com

IF/RF MICROWAVE COMPONENTS

For detailed performance specs & shopping online see web site

Notes: 1. Performance and quality attributes and conditions not expressly stated in this specification sheet are intended to be excluded and do not form a part of this specification sheet. 2. Electrical specifications and performance data contained herein are based on Mini-Circuits' applicable established test performance criteria and measurement instructions. 3. The parts covered by this specification sheet are subject to Mini-Circuits standard limited warranty and terms and conditions (collectively, "Standard Terms"); Purchasers of this part are entitled to the rights and benefits contained therein. For a full statement of the Standard Terms and the exclusive rights and remedies thereunder, please visit Mini-Circuits' website at www.minicircuits.com/MCLStore/terms.jsp.

REV. B
M113397
PIF-70+
090820