

Plug-In

Bandpass Filter

PIF-30+

50Ω Constant Impedance 25 to 35 MHz

Maximum Ratings

Operating Temperature -55°C to 100°C

Storage Temperature -55°C to 100°C

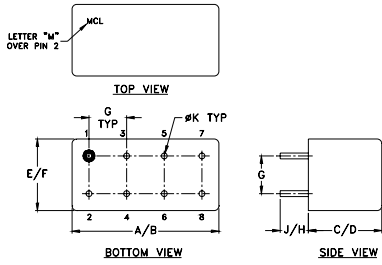
RF Power Input 0.5W max.

Permanent damage may occur if any of these limits are exceeded.

Pin Connections

INPUT	1
OUTPUT	6
GROUND	2,3,4,5,7,8
CASE GROUND	2,5,7,8

Outline Drawing



Outline Dimensions (inch/mm)

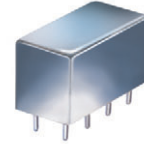
A	B	C	D	E	F
.770	.800	.385	.400	.370	.400
19.56	20.32	9.78	10.16	9.40	10.16
G	H	J	K		wt
.200	.20	.14	.031		grams
5.08	5.08	3.56	0.79		5.2

Features

- low VSWR in pass & stopbands, 1.3:1 typ.
- shielded welded case, hermetically sealed
- custom designs available

Applications

- harmonic rejection
- lab use
- military/hi-rel applications



CASE STYLE: A01

PRICE: \$17.20 ea. QTY: 1-9

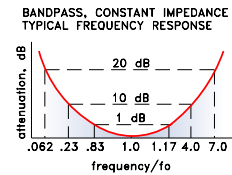
+ RoHS compliant in accordance with EU Directive (2002/95/EC)

The +Suffix has been added in order to identify RoHS Compliance. See our web site for RoHS Compliance methodologies and qualifications.

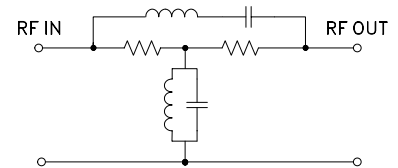
Bandpass Filter Electrical Specifications

MODEL NO.	CENTER FREQ. (MHz)	PASSBAND (MHz) (loss < 1 dB)	STOPBANDS		VSWR, 1.3:1 Typ. TOTAL BAND (MHz)
			(loss > 10 dB) at MHz	(loss > 20 dB) at MHz	
PIF-30+	30	25-35	7 & 120	1.9 & 210	DC-330

typical frequency response

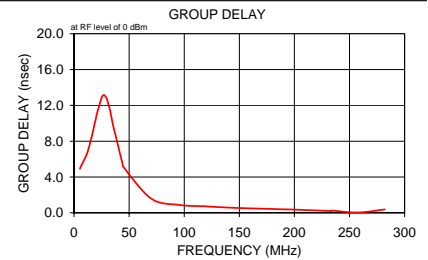


electrical schematic



Typical Performance Data

Frequency (MHz)	Insertion Loss (dB)		Return Loss (dB)	Frequency (MHz)	Group Delay (nsec)
	\bar{x}	σ			
1.0	30.97	0.1	59.5	5.3	4.911
1.2	29.52	0.1	57.9	7.0	5.392
1.4	28.29	0.1	57.1	8.0	5.612
1.5	27.23	0.1	56.5	12.0	6.685
1.7	26.25	0.1	56.0	16.0	8.448
1.9	25.40	0.1	55.5	20.0	10.612
2.0	24.95	0.1	55.8	21.0	11.190
5.3	16.33	0.1	49.5	25.0	12.864
7.0	13.88	0.1	47.5	26.0	13.075
8.0	12.64	0.1	46.0	27.3	13.145
12.0	8.66	0.1	41.6	28.8	12.980
16.0	5.59	0.1	37.4	30.0	12.639
20.0	3.10	0.1	33.5	31.0	12.237
26.0	0.66	0.1	29.6	32.3	11.647
28.7	0.26	0.1	28.0	33.8	10.775
31.0	0.25	0.1	26.7	35.0	10.047
33.7	0.55	0.1	26.1	36.0	9.449
44.0	2.99	0.1	27.1	44.0	5.471
45.0	3.25	0.1	27.2	45.0	5.093
70.0	8.33	0.1	30.4	70.0	1.581
95.0	11.72	0.1	31.5	95.0	0.883
120.0	14.33	0.1	31.8	120.0	0.718
121.0	14.43	0.1	31.8	121.0	0.703
180.0	19.47	0.1	31.2	150.8	0.518
210.0	21.85	0.1	30.8	180.3	0.428
211.0	21.93	0.1	30.8	210.0	0.305
258.6	26.09	0.2	29.8	233.8	0.196
282.4	28.52	0.2	29.3	234.0	0.244
306.2	31.23	0.3	28.7	258.0	0.031
330.0	34.20	0.4	28.2	282.0	0.378



For detailed performance specs & shopping online see web site

P.O. Box 350166, Brooklyn, New York 11235-0003 (718) 934-4500 Fax (718) 332-4661 The Design Engineers Search Engine Provides ACTUAL Data Instantly at minicircuits.com

Notes: 1. Performance and quality attributes and conditions not expressly stated in this specification sheet are intended to be excluded and do not form a part of this specification sheet. 2. Electrical specifications and performance data contained herein are based on Mini-Circuits' applicable established test performance criteria and measurement instructions. 3. The parts covered by this specification sheet are subject to Mini-Circuits standard limited warranty and terms and conditions (collectively, "Standard Terms"); Purchasers of this part are entitled to the rights and benefits contained therein. For a full statement of the Standard Terms and the exclusive rights and remedies thereunder, please visit Mini-Circuits' website at www.minicircuits.com/MCLStore/terms.jsp.

REV. B
M120055
PIF-30+
090820