

# Plug-In High Pass Filter

## PHP-600

50Ω 600 to 1600 MHz

### Maximum Ratings

Operating Temperature	-55°C to 100°C
Storage Temperature	-55°C to 100°C
RF Power Input	0.5W max.

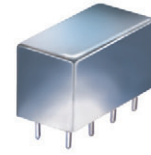
Permanent damage may occur if any of these limits are exceeded.

### Pin Connections

INPUT	1
OUTPUT	8
GROUND	2,3,4,5,6,7
CASE GROUND	2,3,4,5,6,7

### Features

- rugged shielded case
- other standard and custom PHP models available with wide selection of fco



CASE STYLE: A01  
PRICE: \$17.20 ea. QTY: (1-9)

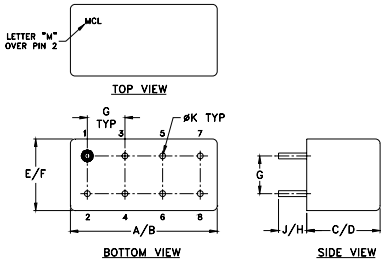
### Applications

- lab use
- transmitters/receivers
- military/hi-rel application

### High Pass Filter Electrical Specifications

STOPBAND (MHz)		fco (MHz) Nom.	PASSBAND (MHz)	VSWR (:1)	
(loss > 40 dB)	(loss > 20 dB)	(loss 3 dB)	(loss < 1 dB)	Stopband Typ.	Passband Typ.
DC-350	350-440	545	600-1600	17	2.0

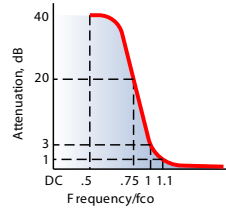
### Outline Drawing



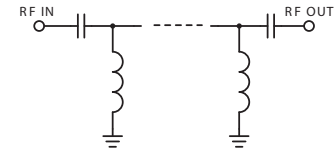
### Outline Dimensions (inch/mm)

A	B	C	D	E	F
.770	.800	.385	.400	.370	.400
19.56	20.32	9.78	10.16	9.40	10.16
G	H	J	K	wt	
.200	.20	.14	.031	grams	
5.08	5.08	3.56	0.79	5.2	

### typical frequency response

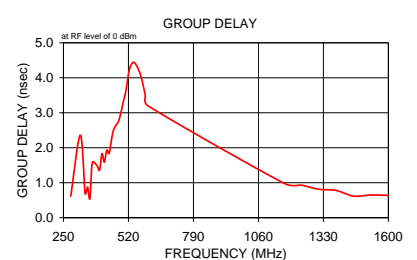
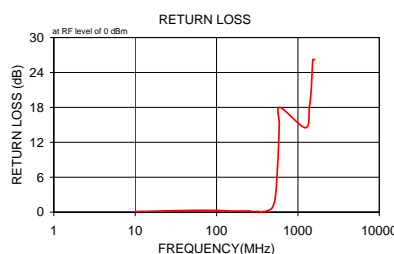
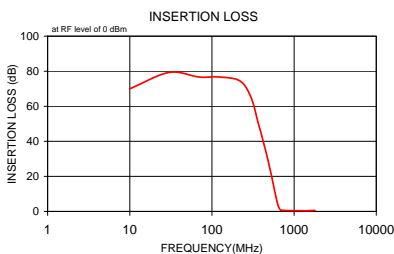


### electrical schematic



### Typical Performance Data

Frequency (MHz)	Insertion Loss (dB)		Return Loss (dB)	Frequency (MHz)	Group Delay (nsec)
	$\bar{x}$	$\sigma$			
10.00	73.34	3.0	0.1	280.00	0.61
50.00	75.79	7.9	0.3	320.00	2.36
100.00	81.25	9.1	0.3	340.00	0.70
150.00	74.62	7.3	0.2	350.00	0.88
220.00	74.57	5.6	0.2	360.00	0.55
250.00	73.20	2.3	0.2	370.00	1.58
280.00	63.08	1.6	0.1	390.00	1.48
320.00	50.76	0.3	0.1	400.00	1.36
340.00	46.03	0.5	0.1	410.00	1.83
350.00	43.60	0.5	0.0	420.00	1.59
360.00	41.20	0.5	0.1	430.00	1.93
390.00	34.33	0.6	0.1	440.00	1.84
410.00	29.83	0.6	0.2	450.00	2.25
420.00	27.62	0.6	0.2	460.00	2.54
430.00	25.37	0.6	0.3	480.00	2.78
440.00	23.19	0.6	0.3	500.00	3.35
450.00	20.99	0.6	0.4	510.00	3.64
480.00	14.50	0.6	0.7	520.00	4.11
510.00	8.36	0.5	1.5	530.00	4.35
520.00	6.52	0.4	2.0	545.00	4.43
530.00	4.89	0.3	2.8	570.00	4.09
545.00	2.97	0.1	4.6	590.00	3.50
570.00	1.21	0.1	9.6	600.00	3.20
590.00	0.72	0.1	15.0	1167.50	0.98
600.00	0.61	0.1	18.0	1237.50	0.93
1237.50	0.47	0.1	14.5	1310.00	0.82
1382.50	0.40	0.1	18.1	1382.50	0.78
1455.00	0.38	0.1	20.9	1455.00	0.62
1527.50	0.37	0.1	26.2	1527.50	0.65
1600.00	0.36	0.1	26.2	1600.00	0.64



**Mini-Circuits®**  
ISO 9001 ISO 14001 AS 9100 CERTIFIED

P.O. Box 350166, Brooklyn, New York 11235-0003 (718) 934-4500 Fax (718) 332-4661 The Design Engineers Search Engine Provides ACTUAL Data Instantly at [minicircuits.com](http://minicircuits.com)

IF/RF MICROWAVE COMPONENTS

Notes: 1. Performance and quality attributes and conditions not expressly stated in this specification sheet are intended to be excluded and do not form a part of this specification sheet. 2. Electrical specifications and performance data contained herein are based on Mini-Circuits' applicable established test performance criteria and measurement instructions. 3. The parts covered by this specification sheet are subject to Mini-Circuits standard limited warranty and terms and conditions (collectively, "Standard Terms"); Purchasers of this part are entitled to the rights and benefits contained therein. For a full statement of the Standard Terms and the exclusive rights and remedies thereunder, please visit Mini-Circuits' website at [www.minicircuits.com/MCLStore/terms.jsp](http://www.minicircuits.com/MCLStore/terms.jsp).

REV. OR  
M97270  
PHP-600  
090820