

# Plug-In High Pass Filter

## PHP-200+

50Ω 185 to 800 MHz

### Maximum Ratings

Operating Temperature	-55°C to 100°C
Storage Temperature	-55°C to 100°C
RF Power Input	0.5W max.

Permanent damage may occur if any of these limits are exceeded.

### Pin Connections

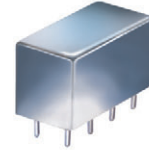
INPUT	1
OUTPUT	8
GROUND	2,3,4,5,6,7
CASE GROUND	2,3,4,5,6,7

### Features

- rugged shielded case
- other standard and custom PHP models available with wide selection of fco

### Applications

- lab use
- transmitters/receivers
- military/hi-rel application



CASE STYLE: A01  
PRICE: \$17.20 ea. QTY: (1-9)

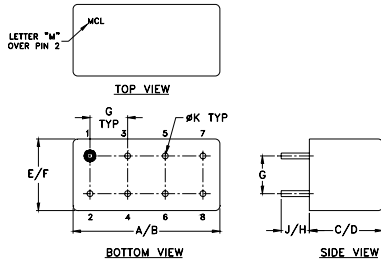
+ RoHS compliant in accordance with EU Directive (2002/95/EC)

The +Suffix has been added in order to identify RoHS Compliance. See our web site for RoHS Compliance methodologies and qualifications.

### High Pass Filter Electrical Specifications

STOPBAND (MHz)	fco (MHz) Nom.	PASSBAND (MHz)	VSWR (:1)
(loss > 40 dB)	(loss > 20 dB)	(loss < 3 dB)	Stopband Typ. Passband Typ.
DC-90	90-116	164	17 1.6

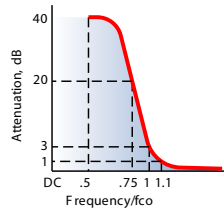
### Outline Drawing



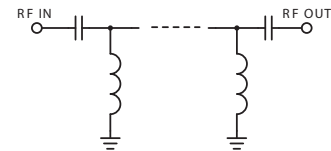
### Outline Dimensions (inch/mm)

A	B	C	D	E	F
.770	.800	.385	.400	.370	.400
19.56	20.32	9.78	10.16	9.40	10.16
G	H	J	K	wt	
.200	.20	.14	.031	grams	
5.08	5.08	3.56	0.79	5.2	

### typical frequency response

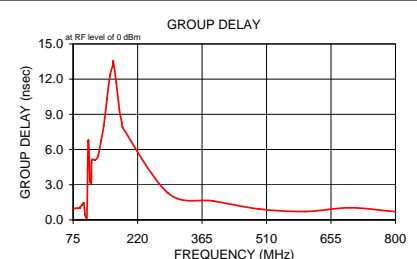
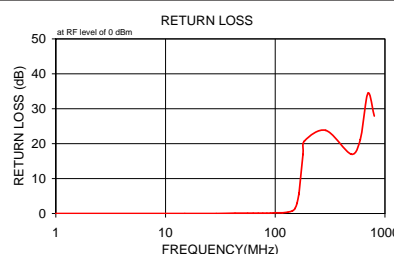


### electrical schematic



### Typical Performance Data

Frequency (MHz)	Insertion Loss (dB)	Return Loss (dB)	Frequency (MHz)	Group Delay (nsec)
	$\bar{x}$	$\sigma$		
1.00	79.13	4.3	77.00	0.98
15.00	82.18	2.2	84.00	0.99
29.00	71.32	5.5	90.00	1.01
43.00	76.14	5.3	91.00	1.11
56.00	80.66	8.1	95.00	1.26
63.00	71.77	4.8	99.00	1.43
70.00	68.26	1.4	102.00	0.44
77.00	64.30	1.4	106.00	0.13
84.00	57.15	0.6	109.00	6.77
90.00	51.69	0.7	113.00	3.23
91.00	51.14	0.4	116.00	3.16
99.00	45.20	0.4	117.00	5.12
106.00	40.04	0.5	124.00	5.09
109.00	37.91	0.4	131.00	5.42
113.00	35.09	0.5	138.00	6.79
116.00	32.89	0.5	144.00	8.01
117.00	32.20	0.5	151.00	10.28
131.00	22.48	0.4	158.00	12.34
144.00	13.65	0.3	164.00	13.13
151.00	9.11	0.2	165.00	13.51
158.00	5.16	0.2	172.00	11.71
164.00	2.79	0.3	179.00	9.38
165.00	2.50	0.3	185.00	8.24
179.00	0.74	0.1	186.00	7.90
185.00	0.60	0.1	289.00	2.27
289.00	0.32	0.1	391.00	1.61
493.00	0.34	0.1	493.00	0.93
596.00	0.29	0.1	596.00	0.72
698.00	0.26	0.1	698.00	1.03
800.00	0.27	0.1	800.00	0.70



**Mini-Circuits**  
ISO 9001 ISO 14001 AS 9100 CERTIFIED

P.O. Box 350166, Brooklyn, New York 11235-0003 (718) 934-4500 Fax (718) 332-4661 The Design Engineers Search Engine Provides ACTUAL Data Instantly at [minicircuits.com](http://minicircuits.com)

IF/RF MICROWAVE COMPONENTS

For detailed performance specs & shopping online see web site

Notes: 1. Performance and quality attributes and conditions not expressly stated in this specification sheet are intended to be excluded and do not form a part of this specification sheet. 2. Electrical specifications and performance data contained herein are based on Mini-Circuit's applicable established test performance criteria and measurement instructions. 3. The parts covered by this specification sheet are subject to Mini-Circuits standard limited warranty and terms and conditions (collectively, "Standard Terms"); Purchasers of this part are entitled to the rights and benefits contained therein. For a full statement of the Standard Terms and the exclusive rights and remedies thereunder, please visit Mini-Circuits' website at [www.minicircuits.com/MCLStore/terms.jsp](http://www.minicircuits.com/MCLStore/terms.jsp).

REV. B  
M108294  
PHP-200+  
090820