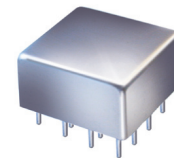


Plug-In Directional Coupler

50Ω 0.1 to 2000 MHz

PDC-20A-5+



CASE STYLE: C145
PRICE: \$47.20 ea. QTY. (1-9)

+ RoHS compliant in accordance with EU Directive (2002/95/EC)

The +Suffix has been added in order to identify RoHS Compliance. See our web site for RoHS Compliance methodologies and qualifications.

Maximum Ratings

Operating Temperature	-55°C to 100°C
Storage Temperature	-55°C to 100°C

Permanent damage may occur if any of these limits are exceeded.

Pin Connections

INPUT	14
OUTPUT	8
COUPLED	5
GROUND	all other pins
CASE GROUND	all other pins

Features

- very wideband, 0.1 to 2000 MHz
- good directivity, 25 dB typ.
- excellent mainline loss, 0.6 dB typ.
- rugged welded construction, hermetically sealed

Applications

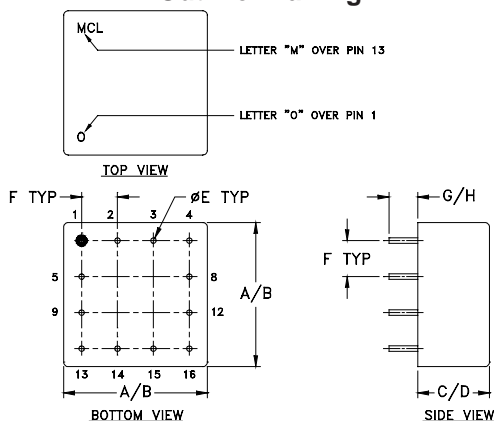
- cellular/GPS
- instrumentation
- communications receivers & transmitters
- defense & federal communications

Directional Coupler Electrical Specifications

FREQ. (MHz)	COUPLING (dB)		MAINLINE LOSS ¹ (dB)						DIRECTIVITY (dB)			VSWR (:1)	POWER INPUT, W				
			L		M		U		L	M	U		L	MU			
	f _L -f _U	Nom.	Flatness	Typ.	Max.	Typ.	Max.	Typ.	Max.	Typ.	Min.	Typ.	Min.	Typ.	Min.	Typ.	Max.
0.1-2000	20.0±0.5	±1.0	0.6	1.5	0.6	1.5	1.9	2.9	34	20	25	15	20	10	1.5	0.5	2.0

L = low range [f_L to 10 f_L] M = mid range [10 f_L to f_U/2] U = upper range [f_U/2 to f_U]
1. Mainline loss includes theoretical power loss at coupled port.

Outline Drawing

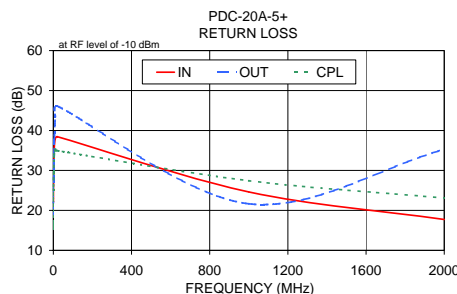
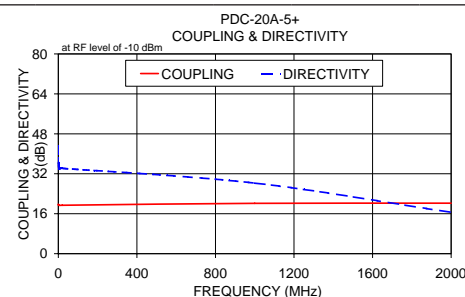
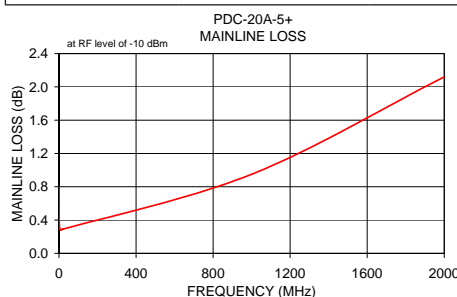


Outline Dimensions (inch/mm)

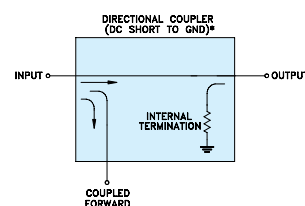
A	B	C	D	E
.770	.810	.380	.410	.030
19.56	20.57	9.65	10.41	0.76
F	G	H	wt	
.200	.20	.14	grams	
5.08	5.08	3.56	11.0	

Typical Performance Data

Frequency (MHz)	Mainline Loss (dB) In-Out	Coupling (dB) In-Cpl	Directivity (dB)	Return Loss (dB)		Cpl
				In	Out	
0.10	0.80	19.80	42.90	22.32	18.40	15.30
0.20	0.60	19.71	41.29	22.12	19.73	17.14
0.50	0.49	19.57	37.18	23.02	23.62	22.88
1.00	0.41	19.50	35.94	26.29	27.31	26.01
2.00	0.34	19.42	34.63	29.91	31.22	29.52
5.00	0.29	19.36	33.94	35.77	38.05	33.98
10.00	0.28	19.36	34.20	38.00	43.40	35.28
20.00	0.29	19.39	34.18	38.45	46.13	34.97
1000.00	0.95	20.15	28.28	24.62	21.67	27.44
2000.00	2.12	20.22	16.58	17.72	35.28	23.10



Electrical Schematic



* ELECTRICAL SCHEMATIC IS FOR DIRECTIONAL COUPLER WITH INTERNAL TRANSFORMERS THAT ROUTES DC FROM RF PORTS TO GROUND.

For detailed performance specs & shopping online see web site

Mini-Circuits
ISO 9001 ISO 14001 AS 9100 CERTIFIED
IF/RF MICROWAVE COMPONENTS

P.O. Box 350166, Brooklyn, New York 11235-0003 (718) 934-4500 Fax (718) 332-4661 The Design Engineers Search Engine Provides ACTUAL Data Instantly at minicircuits.com

Notes: 1. Performance and quality attributes and conditions not expressly stated in this specification sheet are intended to be excluded and do not form a part of this specification sheet. 2. Electrical specifications and performance data contained herein are based on Mini-Circuit's applicable established test performance criteria and measurement instructions. 3. The parts covered by this specification sheet are subject to Mini-Circuits standard limited warranty and terms and conditions (collectively, "Standard Terms"); Purchasers of this part are entitled to the rights and benefits contained therein. For a full statement of the Standard Terms and the exclusive rights and remedies thereunder, please visit Mini-Circuits' website at www.minicircuits.com/MCLStore/terms.jsp.

REV. B
M119986
PDC-20A-5+
WZ/TD/AM
090904