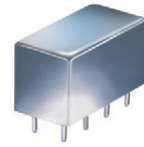


Plug-In Bi-Directional Coupler

PDC-20-1BD+ PDC-20-1BD

50Ω 0.5 to 200 MHz



CASE STYLE: A01
PRICE: \$19.20 ea. QTY. (1-9)

+ RoHS compliant in accordance
with EU Directive (2002/95/EC)

The +Suffix identifies RoHS Compliance. See our web site
for RoHS Compliance methodologies and qualifications.

Maximum Ratings

Operating Temperature	-55°C to 100°C
Storage Temperature	-55°C to 100°C
Permanent damage may occur if any of these limits are exceeded.	

Pin Connections

INPUT	1
OUTPUT	4
COUPLED (forward)	3
COUPLED (reverse)	6
GROUND	2,5,7,8
CASE GROUND	2,5,7,8

Features

- up to 5W power input
- excellent VSWR, 1.1:1 typ.
- very low mainline loss, 0.3 dB typ.
- excellent directivity, 35 dB typ.
- rugged welded construction, hermetically sealed

Applications

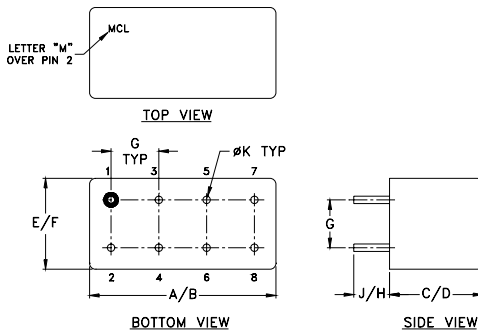
- HF/UHF
- communication receivers & transmitters
- amateur radio

Directional Coupler Electrical Specifications

FREQ. (MHz)	COUPLING (dB)		MAINLINE LOSS ¹ (dB)						DIRECTIVITY (dB)						VSWR (:1)	POWER INPUT, W		
			L		M		U		L		M		U					
	Nom.	Flatness	Typ.	Max.	Typ.	Max.	Typ.	Max.	Typ.	Min.	Typ.	Min.	Typ.	Min.		Typ.	Max.	Min.
f _L -f _U																		
0.5-200	19.2±0.5	±0.5	0.3	0.7	0.3	0.5	0.4	0.6	40	30	35	20	22	18	1.1	3.0	5.0	

L = low range [f_L to 10 f_L] M = mid range [10 f_L to f_U/2] U = upper range [f_U/2 to f_U]
1. Mainline loss includes theoretical power loss at coupled port.

Outline Drawing

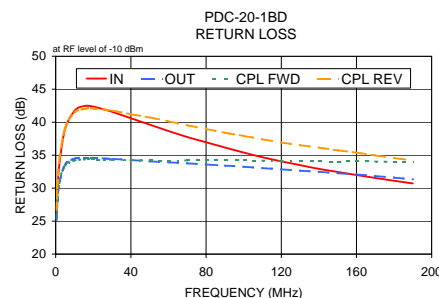
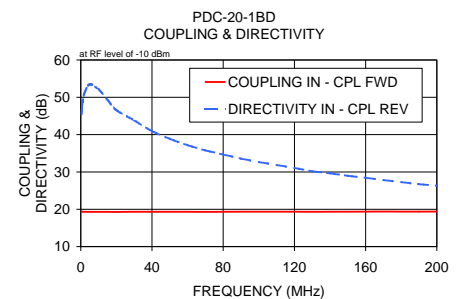
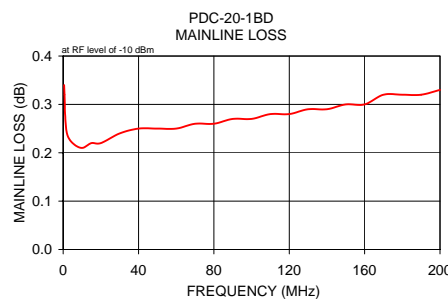


Outline Dimensions (inch/mm)

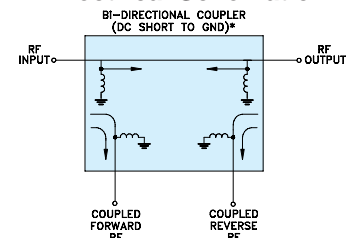
A	B	C	D	E	F
.770	.800	.385	.400	.370	.400
19.56	20.32	9.78	10.16	9.40	10.16
G	H	J	K	wt	
.200	.20	.14	.031	grams	
5.08	5.08	3.56	0.79	5.2	

Typical Performance Data

Frequency (MHz)	Mainline Loss (dB)		Coupling (dB)		Directivity (dB)		Return Loss (dB)			
	In-Out	In-Cpl Fwd	Out-Cpl Rev	Out-Cpl Fwd	In-Cpl Rev	In	Out	Cpl Fwd	Cpl Rev	
0.50	0.34	19.38	19.40	60.80	45.48	26.08	25.12	25.68	26.72	
1.00	0.28	19.35	19.35	61.66	48.74	29.86	28.08	28.62	30.56	
5.00	0.22	19.30	19.31	59.50	53.47	38.93	33.54	33.43	39.10	
10.00	0.21	19.30	19.30	58.75	52.11	41.72	34.47	34.19	41.47	
20.00	0.22	19.29	19.29	57.01	46.56	42.36	34.57	34.35	42.07	
50.00	0.25	19.32	19.33	50.59	38.89	39.63	34.07	34.20	40.71	
100.00	0.27	19.35	19.39	42.93	32.65	35.40	33.24	34.20	37.92	
130.00	0.29	19.33	19.43	39.14	30.18	33.49	32.64	34.07	36.51	
160.00	0.30	19.38	19.47	35.48	28.44	31.99	32.08	34.04	35.39	
200.00	0.33	19.40	19.56	31.91	26.30	30.32	31.08	33.89	33.80	



Electrical Schematic



* ELECTRICAL SCHEMATIC IS FOR BI-DIRECTIONAL COUPLER WITH INTERNAL TRANSFORMER(S) THAT ROUTES DC FROM RF PORTS TO GROUND.

For detailed performance specs & shipping online see web site

Mini-Circuits
ISO 9001 ISO 14001 AS 9100 CERTIFIED
IF/RF MICROWAVE COMPONENTS

P.O. Box 350166, Brooklyn, New York 11235-0003 (718) 934-4500 Fax (718) 332-4661 The Design Engineers Search Engine Provides ACTUAL Data Instantly at minicircuits.com

Notes: 1. Performance and quality attributes and conditions not expressly stated in this specification sheet are intended to be excluded and do not form a part of this specification sheet. 2. Electrical specifications and performance data contained herein are based on Mini-Circuit's applicable established test performance criteria and measurement instructions. 3. The parts covered by this specification sheet are subject to Mini-Circuits standard limited warranty and terms and conditions (collectively, "Standard Terms"); Purchasers of this part are entitled to the rights and benefits contained therein. For a full statement of the Standard Terms and the exclusive rights and remedies thereunder, please visit Mini-Circuits' website at www.minicircuits.com/MCLStore/terms.jsp.

REV. C
M124579
PDC-20-1BD
WZ/TD/CP/AM
091016