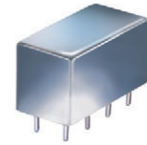


Plug-In Directional Coupler

PDC-10-22

50Ω 5 to 750 MHz



CASE STYLE: A01
PRICE: \$26.20 ea. QTY. (1-9)

Maximum Ratings

Operating Temperature	-55°C to 100°C
Storage Temperature	-55°C to 100°C
Permanent damage may occur if any of these limits are exceeded.	

Pin Connections

INPUT	1
OUTPUT	4
COUPLED	3
GROUND	2,5,7,8
CASE GROUND	2,5,7,8
NOT USED	6

Features

- wideband, 5 to 750 MHz
- excellent directivity, 25 dB typ.
- good VSWR, 1.25:1 typ.
- rugged welded construction, hermetically sealed

Applications

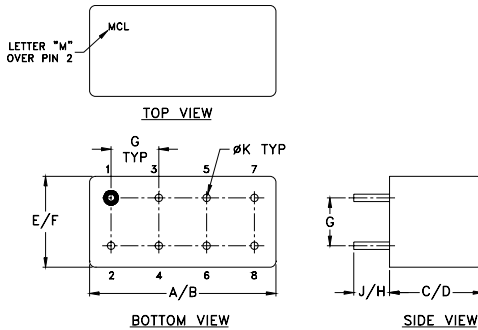
- VHF/UHF
- defense & federal communications
- power levelling

Directional Coupler Electrical Specifications

FREQ. (MHz)	COUPLING (dB)		MAINLINE LOSS ¹ (dB)						DIRECTIVITY (dB)						VSWR (:1)	POWER INPUT, W		
	Nom.	Flatness	L		M		U		L		M		U			Typ.	L	MU
			Typ.	Max.	Typ.	Max.	Typ.	Max.	Typ.	Min.	Typ.	Min.	Typ.	Min.				
5-750	11.0±0.5	±0.5	1.1	1.6	1.2	1.7	1.6	1.9	35	30	25	20	25	20	1.25	1.0	2.0	

L = low range [f_L to $10 f_L$] M = mid range [$10 f_L$ to $f_U/2$] U = upper range [$f_U/2$ to f_U]
1. Mainline loss includes theoretical power loss at coupled port.

Outline Drawing

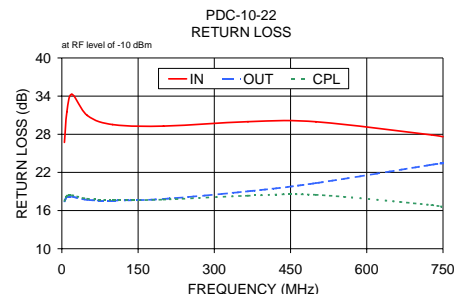
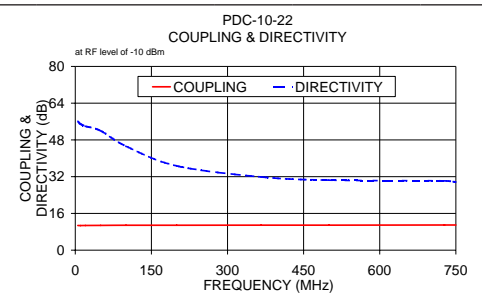
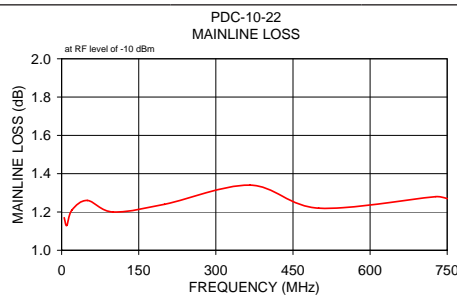


Outline Dimensions (inch/mm)

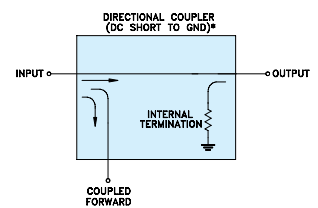
A	B	C	D	E	F
.770	.800	.385	.400	.370	.400
19.56	20.32	9.78	10.16	9.40	10.16
G	H	J	K	wt	
.200	.20	.14	.031	grams	
5.08	5.08	3.56	0.79	5.2	

Typical Performance Data

Frequency (MHz)	Mainline Loss (dB) In-Out	Coupling (dB) In-Cpl	Directivity (dB)	Return Loss (dB)		
				In	Out	Cpl
5.00	1.17	10.76	56.00	26.72	17.45	17.54
10.00	1.13	10.72	55.00	31.54	18.12	18.32
20.00	1.21	10.74	54.00	34.28	18.19	18.42
50.00	1.26	10.79	52.00	30.97	17.69	17.87
100.00	1.20	10.85	45.27	29.52	17.58	17.66
200.00	1.24	10.84	36.71	29.28	17.84	17.74
366.22	1.34	10.87	31.90	29.98	19.03	18.34
500.00	1.22	10.90	30.51	29.97	20.33	18.48
727.43	1.28	10.96	30.19	27.90	23.20	16.88
750.00	1.27	10.94	29.66	27.62	23.46	16.58



Electrical Schematic



* ELECTRICAL SCHEMATIC IS FOR DIRECTIONAL COUPLER WITH INTERNAL TRANSFORMERS THAT ROUTES DC FROM RF PORTS TO GROUND.

For detailed performance specs & shopping online see web site



P.O. Box 350166, Brooklyn, New York 11235-0003 (718) 934-4500 Fax (718) 332-4661 The Design Engineers Search Engine Provides ACTUAL Data Instantly at minicircuits.com

Notes: 1. Performance and quality attributes and conditions not expressly stated in this specification sheet are intended to be excluded and do not form a part of this specification sheet. 2. Electrical specifications and performance data contained herein are based on Mini-Circuit's applicable established test performance criteria and measurement instructions. 3. The parts covered by this specification sheet are subject to Mini-Circuits standard limited warranty and terms and conditions (collectively, "Standard Terms"); Purchasers of this part are entitled to the rights and benefits contained therein. For a full statement of the Standard Terms and the exclusive rights and remedies thereunder, please visit Mini-Circuits' website at www.minicircuits.com/MCLStore/terms.jsp.

REV. A
M119986
PDC-10-22
WZ/TD/CP/AM
081113