

Coaxial Bandpass Filter

NBP-1560+

50Ω 1500 to 1620 MHz

The Big Deal

- High rejection
- Fast roll-off
- Connectorized package



CASE STYLE: FF779

Product Overview

NBP-1560+ is a band pass filter built in rugged connectorized package. Covering a pass band of 1500 to 1620 MHz, these units offer good matching within the pass band and high rejection. This will find its application in Transmitters / receivers and harmonic rejection. It has repeatable performance across production lots and consistent performance across temperature.

Key Features

Feature	Advantages
Narrow bandwidth filter	Fast roll-off, this will attenuate frequencies closer to the passband with good rejection value of >20dB
Sharp shape factor	Sharp shape factor helps in adjacent rejection and increased selectivity
Connectorized package	The connectorized packages are easy to interface with other devices and well suited for test set-ups.



For detailed performance specs & shopping online see web site

P.O. Box 350166, Brooklyn, New York 11235-0003 (718) 934-4500 Fax (718) 332-4661 The Design Engineers Search Engine  Provides ACTUAL Data Instantly at minicircuits.com

IF/RF MICROWAVE COMPONENTS

Notes: 1. Performance and quality attributes and conditions not expressly stated in this specification sheet are intended to be excluded and do not form a part of this specification sheet. 2. Electrical specifications and performance data contained herein are based on Mini-Circuit's applicable established test performance criteria and measurement instructions. 3. The parts covered by this specification sheet are subject to Mini-Circuits standard limited warranty and terms and conditions (collectively, "Standard Terms"); Purchasers of this part are entitled to the rights and benefits contained therein. For a full statement of the Standard Terms and the exclusive rights and remedies thereunder, please visit Mini-Circuits' website at www.minicircuits.com/MCLStore/terms.jsp.

Coaxial Bandpass Filter

NBP-1560+

50Ω 1500 to 1620 MHz



Features

- High rejection
- Fast roll-off
- Temperature stable
- LTCC Construction
- Connectorized package

Applications

- Harmonic Rejection
- Transmitter / Receivers
- Lab use

CASE STYLE: FF779

Connectors	Model	Price	Qty.
N-Type	NBP-1560+	\$43.95 ea.	(1-9)

Electrical Specifications at 25°C

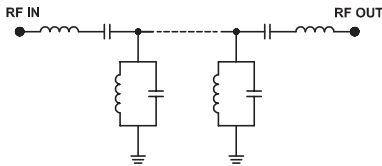
Parameter	F#	Frequency (MHz)	Min.	Typ.	Max.	Unit	
Pass Band	Center Frequency	—	—	1560	—	MHz	
	Insertion Loss	F1-F2	1500 - 1620	—	2.7	4.5	dB
	VSWR	F1-F2	1500 - 1620	—	1.4	2.1	:1
Stop Band, Lower	Insertion Loss	DC-F3	DC -1060	20	32	—	dB
	VSWR	DC-F3	DC -1060	—	28	—	:1
Stop Band, Upper	Insertion Loss	F4-F5	2150 - 4200	20	28	—	dB
	VSWR	F4-F5	2150 - 4200	—	8	—	:1

Maximum Ratings

Operating Temperature	-40°C to 85°C
Storage Temperature	-55°C to 100°C
RF Power Input	1.5W max.

Permanent damage may occur if any of these limits are exceeded.

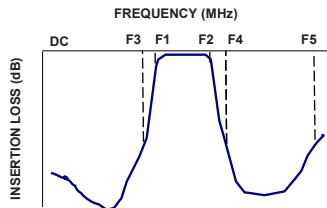
Functional Schematic



Typical Performance Data at 25°C

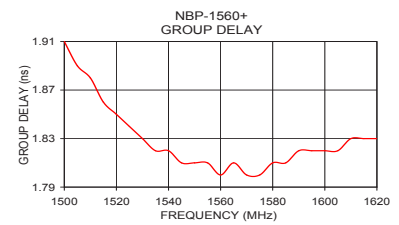
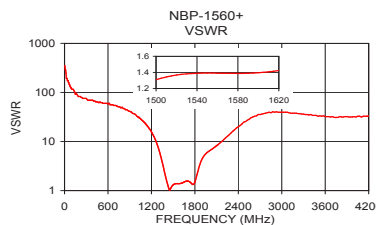
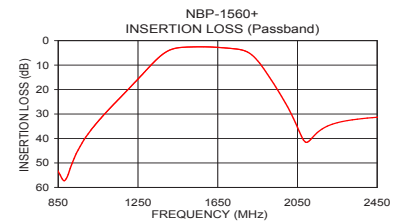
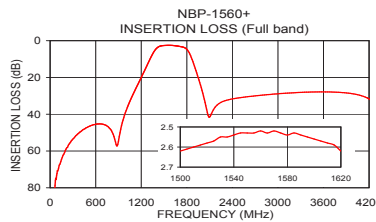
Frequency (MHz)	Insertion Loss (dB)	VSWR (:1)	Frequency (MHz)	Group Delay (nsec)
1	103.25	347.44	1500	1.91
50	83.60	173.72	1510	1.88
500	46.86	62.05	1520	1.85
1000	38.12	32.79	1530	1.83
1060	32.05	28.03	1535	1.82
1100	28.46	24.48	1540	1.82
1260	14.84	10.37	1545	1.81
1350	7.21	3.75	1550	1.81
1410	3.83	1.58	1555	1.81
1500	2.62	1.31	1560	1.80
1560	2.52	1.39	1570	1.80
1620	2.62	1.42	1580	1.81
1740	3.38	1.46	1585	1.81
1830	6.45	2.13	1590	1.82
1890	12.57	4.12	1595	1.82
1980	24.13	6.15	1600	1.82
2150	37.55	9.43	1605	1.82
3000	28.89	39.49	1610	1.83
3500	27.87	32.79	1615	1.83
4200	31.69	32.79	1620	1.83

Typical Frequency Response



+RoHS Compliant

The +Suffix identifies RoHS Compliance. See our web site for RoHS Compliance methodologies and qualifications



For detailed performance specs & shopping online see web site

P.O. Box 350166, Brooklyn, New York 11235-0003 (718) 934-4500 Fax (718) 332-4661 The Design Engineers Search Engine [minicircuits.com](http://www.minicircuits.com) Provides ACTUAL Data Instantly at minicircuits.com

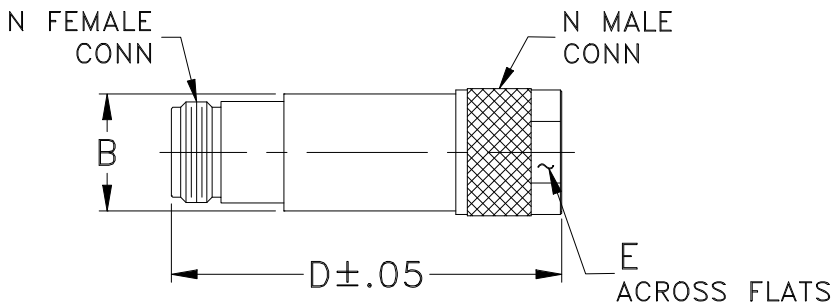
IF/RF MICROWAVE COMPONENTS

Notes: 1. Performance and quality attributes and conditions not expressly stated in this specification sheet are intended to be excluded and do not form a part of this specification sheet. 2. Electrical specifications and performance data contained herein are based on Mini-Circuit's applicable established test performance criteria and measurement instructions. 3. The parts covered by this specification sheet are subject to Mini-Circuits standard limited warranty and terms and conditions (collectively, "Standard Terms"); Purchasers of this part are entitled to the rights and benefits contained therein. For a full statement of the Standard Terms and the exclusive rights and remedies thereunder, please visit Mini-Circuits' website at www.minicircuits.com/MCLStore/terms.jsp.

Coaxial Connections

INPUT	N Female
OUTPUT	N Male

Outline Drawing



Outline Dimensions ($\frac{\text{inch}}{\text{mm}}$)

B	D	E	wt
.68	2.11	.718	grams
17.27	53.59	18.24	72.5