

Coaxial Bandpass Filter

NBP-10.7+ NBP-10.7

50Ω Elliptic Response 9.5 to 11.5 MHz

Maximum Ratings

Operating Temperature	-55°C to 100°C
Storage Temperature	-55°C to 100°C
RF Power Input	0.5W max.

Permanent damage may occur if any of these limits are exceeded.

Features

- low insertion loss, 1.5 dB max.
- good selectivity, 1.76 typ. 20 dB/3dB ratio
- rugged shielded case

Applications

- high rejection applications
- image rejection
- IF signal processing



CASE STYLE: FF57

Connectors	Model	Price	Qty.
N-Type	NBP-10.7(+)	\$43.95 ea.	(1-9)

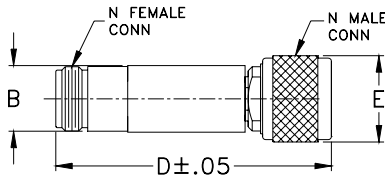
+ RoHS compliant in accordance with EU Directive (2002/95/EC)

The +Suffix identifies RoHS Compliance. See our web site for RoHS Compliance methodologies and qualifications.

Bandpass Filter Electrical Specifications

MODEL NO.	CENTER FREQ. (MHz)	PASSBAND (MHz) I.L. 1.5 dB Max.	3dB BANDWIDTH (MHz) Typ.	STOPBANDS		VSWR (:1)	
				(l. loss > 20 dB) at MHz	(l. loss > 35 dB) at MHz	Passband Max.	Stopband Typ.
NBP-10.7(+)	10.7	9.5-11.5	8.9-12.7	7.5 & 15	0.6 & 50-1000	1.7	16

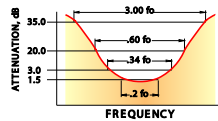
Outline Drawing



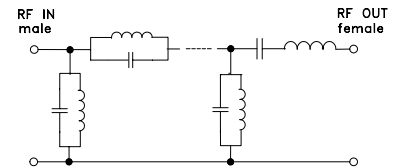
Outline Dimensions (inch/mm)

B	D	E	wt
.67	2.90	.82	grams
17.02	73.66	20.83	90.0

typical frequency response

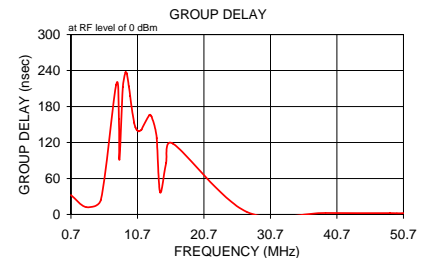
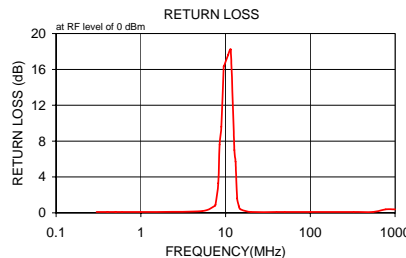
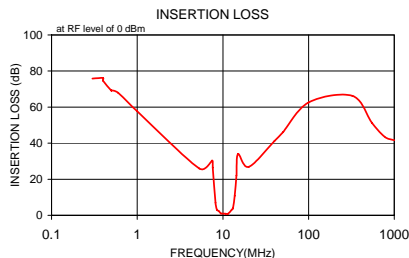


electrical schematic



Typical Performance Data

Frequency (MHz)	Insertion Loss (dB)		Return Loss (dB)	Frequency (MHz)	Group Delay (nsec)
	\bar{x}	σ			
0.3	75.80	2.6	0.1	0.7	32.371
0.4	76.10	4.5	0.1	3.0	12.114
0.4	74.62	4.4	0.1	5.2	24.403
0.5	69.06	2.7	0.1	7.5	215.923
0.5	69.33	1.0	0.1	7.9	159.468
0.6	67.91	1.5	0.1	8.0	91.912
1.0	57.74	0.3	0.1	8.5	212.732
5.3	25.94	0.6	0.2	8.9	237.192
7.5	30.37	2.8	0.8	9.1	235.123
7.6	26.43	4.9	0.9	9.4	213.803
8.2	7.00	1.5	3.3	9.6	197.449
8.5	3.15	0.8	7.6	9.8	180.177
8.9	2.45	0.7	9.6	10.2	153.153
9.5	0.99	0.1	16.3	10.4	145.221
9.6	0.97	0.1	16.4	10.6	140.803
10.7	0.86	0.1	17.6	10.9	138.559
11.5	0.92	0.1	18.2	11.3	141.337
12.7	3.16	0.8	7.0	11.5	145.896
13.1	3.82	1.0	5.7	12.5	165.780
13.7	10.81	2.5	1.6	12.8	163.590
14.4	22.10	4.6	0.7	13.3	145.784
15.0	33.97	4.4	0.4	13.6	127.403
20.0	26.84	0.5	0.1	14.1	36.953
40.0	41.22	0.5	0.1	15.0	85.658
50.0	46.00	0.7	0.1	16.0	118.360
100.0	62.57	1.7	0.1	27.1	4.513
325.0	66.25	3.8	0.1	39.0	2.558
550.0	51.22	1.1	0.1	48.7	2.259
775.0	43.48	1.5	0.4	49.7	2.045
1000.0	41.66	1.9	0.4	50.7	2.283



P.O. Box 350166, Brooklyn, New York 11235-0003 (718) 934-4500 Fax (718) 332-4661 The Design Engineers Search Engine Provides ACTUAL Data Instantly at minicircuits.com

IF/RF MICROWAVE COMPONENTS

For detailed performance specs & shopping online see web site

Notes: 1. Performance and quality attributes and conditions not expressly stated in this specification sheet are intended to be excluded and do not form a part of this specification sheet. 2. Electrical specifications and performance data contained herein are based on Mini-Circuits' applicable established test performance criteria and measurement instructions. 3. The parts covered by this specification sheet are subject to Mini-Circuits standard limited warranty and terms and conditions (collectively, "Standard Terms"); Purchasers of this part are entitled to the rights and benefits contained therein. For a full statement of the Standard Terms and the exclusive rights and remedies thereunder, please visit Mini-Circuits' website at www.minicircuits.com/MCLStore/terms.jsp.

REV. A
M98898
NBP-10.7
090820