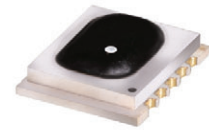


Ceramic

Frequency Mixer WIDE BAND

MCA1T-80H+

Level 17 (LO Power+17 dBm) 2800 to 8000 MHz



CASE STYLE: DZ885-2
PRICE: \$10.45 ea. QTY (10-49)

+ RoHS compliant in accordance with EU Directive (2002/95/EC)

The +Suffix has been added in order to identify RoHS Compliance. See our web site for RoHS Compliance methodologies and qualifications.

Maximum Ratings

Operating Temperature	-40°C to 85°C
Storage Temperature	-40°C to 85°C
RF Power	200 mW
IF Current	40 mA
Permanent damage may occur if any of these limits are exceeded.	

Pin Connections

LO	10
RF	5
IF	3
GROUND	1,2,4,6,7,8,9

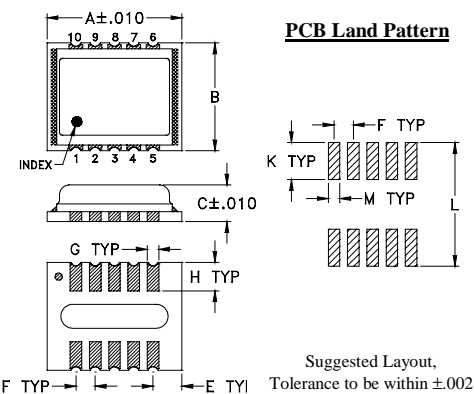
Features

- wide bandwidth, 2800 to 8000 MHz
- low conversion loss, 6.3 dB typ.
- high L-R isolation, 35 dB typ.
- IF, DC to 1250 MHz
- LTCC double balanced mixer
- aqueous washable
- low cost
- low profile, 0.095"
- protected by US Patent 7,027,795
- additional patent pending

Applications

- satellite up and down converters
- line of sight links
- defense radar
- defense communication

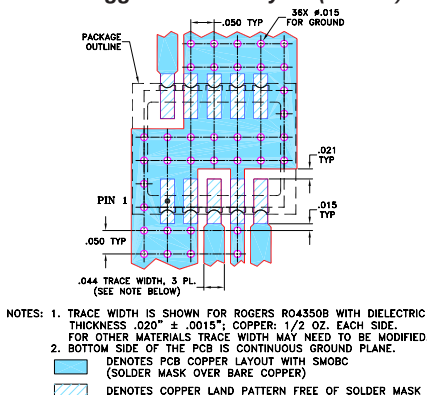
Outline Drawing



Outline Dimensions (inch/mm)

A	B	C	E	F	G
.350	.280	.095	.075	.050	.030
8.89	7.11	2.41	1.91	1.27	0.76
H	K	L	M	wt	
.074	.096	.321	.030		grams
1.88	2.44	8.15	0.76		0.21

Demo Board MCL P/N: TB-493+ Suggested PCB Layout (PL-288)



Electrical Specifications (T_{AMB} = -40°C to 85°C)

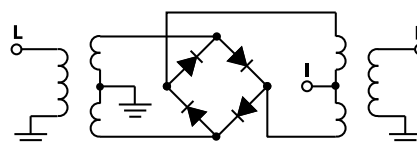
FREQUENCY (MHz)	CONVERSION LOSS (dB)			LO-RF ISOLATION (dB)		LO-IF ISOLATION (dB)		IP3 at center band (dBm)			
	LO/RF f _L -f _U	IF	σ	Max.	Typ.	Min.	Typ.		Min.		
2800-8000	DC-1250			6.5	0.2	8.9*	34	22	12	8	24
2800-5000	DC-1250			6.0	0.2	8.9*	35	21	35	13	21

1 dB COMPR. +14 dBm typ.
* Conversion loss at 30 MHz IF, increases with IF frequency.

Typical Performance Data

Frequency (MHz)	Conversion Loss (dB)		Isolation L-R (dB)		Isolation L-I (dB)		VSWR RF Port (:1)		VSWR LO Port (:1)	
	LO	+13dBm	LO	+13dBm	LO	+13dBm	LO	+13dBm	LO	+13dBm
2800.00	2830.10	6.32	43.01	12.42	2.41	1.99				
5000.00	5030.10	7.02	35.98	24.98	2.67	2.98				
6200.00	6230.10	5.89	32.88	37.57	2.97	3.25				
6300.00	6330.10	5.62	32.26	38.59	3.20	3.45				
6400.00	6430.10	5.42	34.86	39.69	3.42	3.20				
6500.00	6530.10	5.18	35.38	41.78	3.13	2.96				
6600.00	6630.10	5.28	32.64	45.82	2.98	2.83				
6650.00	6680.10	5.56	32.40	45.78	3.06	2.60				
6700.00	6730.10	5.13	32.63	44.65	3.30	2.60				
7000.00	7030.10	5.25	32.22	45.62	3.13	2.72				
7150.00	7180.10	5.61	32.69	45.49	3.45	2.83				
7200.00	7230.10	5.46	32.89	43.89	3.67	2.89				
7300.00	7330.10	5.55	33.59	41.45	3.62	3.04				
7400.00	7430.10	5.65	34.45	40.66	3.45	3.13				
7500.00	7530.10	5.79	33.59	41.99	3.45	3.22				
7600.00	7630.10	6.08	34.10	41.64	3.86	3.16				
7700.00	7730.10	6.18	34.94	34.31	4.74	2.97				
7800.00	7830.10	6.31	35.54	30.40	5.09	2.86				
7900.00	7930.10	6.25	35.75	27.33	4.68	2.86				
8000.00	8030.10	6.30	33.26	24.54	4.50	3.15				

Electrical Schematic



Mini-Circuits
ISO 9001 ISO 14001 AS 9100 CERTIFIED

For detailed performance specs & shopping online see web site

P.O. Box 350166, Brooklyn, New York 11235-0003 (718) 934-4500 Fax (718) 332-4661 The Design Engineers Search Engine Provides ACTUAL Data Instantly at minicircuits.com

Notes: 1. Performance and quality attributes and conditions not expressly stated in this specification sheet are intended to be excluded and do not form a part of this specification sheet. 2. Electrical specifications and performance data contained herein are based on Mini-Circuit's applicable established test performance criteria and measurement instructions. 3. The parts covered by this specification sheet are subject to Mini-Circuits standard limited warranty and terms and conditions (collectively, "Standard Terms"); Purchasers of this part are entitled to the rights and benefits contained therein. For a full statement of the Standard Terms and the exclusive rights and remedies thereunder, please visit Mini-Circuits' website at www.minicircuits.com/MCLStore/terms.jsp.

REV. OR
M124561
ED-11232/1
MCA1-80H+
DJ/RS/CP
100322
Page 1 of 2

