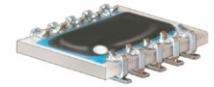


Surface Mount Frequency Mixer

MBA-25MH+ MBA-25MH

Level 13 (LO Power +13 dBm) 2000 to 3000 MHz



Maximum Ratings

Operating Temperature	-40°C to 85°C
Storage Temperature	-55°C to 100°C
RF Power	200mW
IF Current	40mA
Permanent damage may occur if any of these limits are exceeded.	

Pin Connections

LO	10
RF	5
IF	3
GROUND	1,2,4,6,7,8,9

Features

- excellent temperature stability
- excellent performance repeatability
- leads with strain relief
- very low cost
- ultra low height, 0.07"
- aqueous washable
- protected by US Patent 5,534,830

Applications

- wireless local loop
- satellite communication
- PCMCIA

CASE STYLE: SM2
PRICE: \$7.95 ea. QTY (10-49)

+ RoHS compliant in accordance with EU Directive (2002/95/EC)

The +Suffix identifies RoHS Compliance. See our web site for RoHS Compliance methodologies and qualifications.

Electrical Specifications

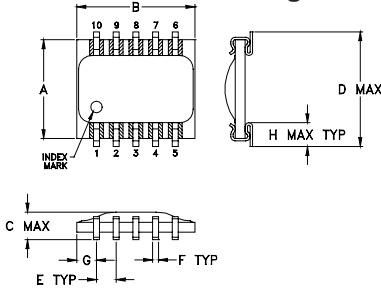
FREQUENCY (MHz)		CONVERSION LOSS (dB)			LO-RF ISOLATION (dB)		LO-IF ISOLATION (dB)		IP3 at center band (dBm)
LO/RF	IF	\bar{X}	σ	Max.	Typ.	Min.	Typ.	Min.	Typ.
2000-3000	DC-500	6.5	0.1	8.6	36	18	20	7	18

1 dB COMP.: +8 dBm typ.

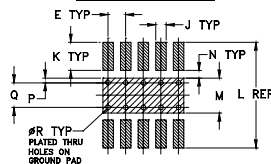
Typical Performance Data

Frequency (MHz)		Conversion Loss (dB)	Isolation L-R (dB)	Isolation L-I (dB)	VSWR RF Port (:1)	VSWR LO Port (:1)
RF	LO	LO +13dBm	LO +13dBm	LO +13dBm	LO +13dBm	LO +13dBm
2000.00	2030.00	7.77	25.90	11.00	4.32	2.43
2050.00	2080.00	7.55	26.10	11.40	3.79	2.35
2100.00	2130.00	7.34	26.70	12.30	3.50	2.25
2150.00	2180.00	7.08	27.60	13.10	3.21	2.12
2200.00	2230.00	6.94	28.30	14.10	2.96	2.03
2250.00	2280.00	6.93	29.60	15.10	2.88	1.97
2300.00	2330.00	7.02	31.20	16.10	2.72	1.88
2350.00	2380.00	6.80	32.30	17.30	2.55	1.84
2400.00	2430.00	6.90	34.40	18.60	2.52	1.69
2470.00	2500.00	6.76	37.50	20.60	2.49	1.56
2500.00	2530.00	6.70	38.40	21.40	2.43	1.51
2550.00	2580.00	6.57	36.30	23.10	2.32	1.48
2600.00	2630.00	6.25	31.70	24.90	2.20	1.43
2650.00	2680.00	6.32	29.20	25.90	1.97	1.46
2700.00	2730.00	6.48	27.70	27.20	1.70	1.46
2750.00	2780.00	6.53	27.70	28.80	1.51	1.44
2800.00	2830.00	6.72	28.30	30.70	1.35	1.48
2850.00	2880.00	6.74	28.70	35.10	1.22	1.47
2900.00	2930.00	6.68	29.40	40.90	1.10	1.48
3000.00	3030.00	6.64	32.10	30.50	1.16	1.54

Outline Drawing



PCB Land Pattern

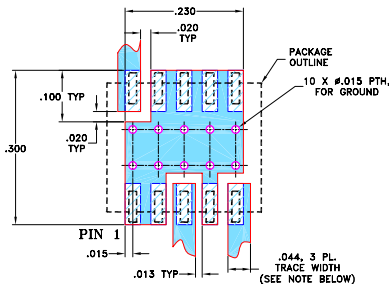


Suggested Layout,
Tolerance to be within ±.002
ADJACENT GROUND PINS SHALL BE CONNECTED TO EACH OTHER AND TO GROUND PAD

Outline Dimensions (inch/mm)

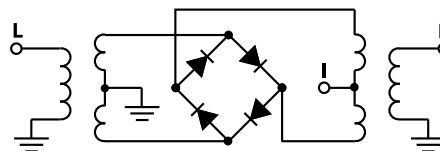
A	B	C	D	E	F	G	H	
.250	.300	.095	.290	.050	.015	.050	.060	
6.35	7.62	2.41	7.37	1.27	0.38	1.27	1.52	
J	K	L	M	N	P	Q	R	wt
.030	.080	.300	.100	.020	.015	.070	.014	grams
0.76	2.03	7.62	2.54	0.51	0.38	1.78	0.36	0.3

Demo Board MCL P/N: TB-99 Suggested PCB Layout (PL-066)



- NOTES: 1. TRACE WIDTH IS SHOWN FOR ROGERS RO4350B WITH DIELECTRIC THICKNESS 0.020" ± 0.0015". COPPER: 1/2 OZ. EACH SIDE. FOR OTHER MATERIALS TRACE WIDTH MAY NEED TO BE MODIFIED.
2. BOTTOM SIDE OF THE PCB IS CONTINUOUS GROUND PLANE.
- DENOTES PCB COPPER LAYOUT WITH SMOBC (SOLDER MASK OVER BARE COPPER)
- DENOTES COPPER LAND PATTERN FREE OF SOLDER MASK

Electrical Schematic



Mini-Circuits
ISO 9001 ISO 14001 AS 9100 CERTIFIED
The Design Engineers Search Engine Provides ACTUAL Data Instantly at minicircuits.com

For detailed performance specs & shopping online see web site

P.O. Box 350166, Brooklyn, New York 11235-0003 (718) 934-4500 Fax (718) 332-4661

Notes: 1. Performance and quality attributes and conditions not expressly stated in this specification sheet are intended to be excluded and do not form a part of this specification sheet. 2. Electrical specifications and performance data contained herein are based on Mini-Circuits' applicable established test performance criteria and measurement instructions. 3. The parts covered by this specification sheet are subject to Mini-Circuits standard limited warranty and terms and conditions (collectively, "Standard Terms"); Purchasers of this part are entitled to the rights and benefits contained therein. For a full statement of the Standard Terms and the exclusive rights and remedies thereunder, please visit Mini-Circuits' website at www.minicircuits.com/MCLStore/terms.jsp.

REV. D
M115169
MBA-25MH
EE-7756/24
090128
Page 1 of 2

