

Self-Cooled High Power Amplifier

LZY-2+

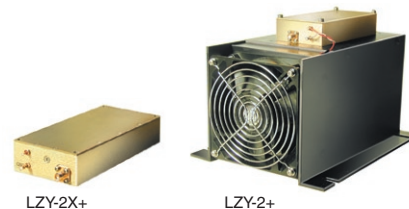
50Ω 32W 500 to 1000 MHz

Features

- saturated power 32W typ.
- high power with low distortion, -45 dBc typ.
- wide bandwidth, usable 475 - 1050 MHz
- high gain, 47 dB typ.
- unconditionally stable
- self protected against excessive drive, high case temp., reverse polarity and shorting/unshorting transients at dc input
- electronic shutoff by grounding the shut-off terminal, reduces output by 50 dB. ungrounding the shutoff terminal restores full power within 40 ms
- cool operation with integral fan, 15° C typ. rise
- graceful degradation, +20 to +30V DC
- can withstand short and open circuit at output for 2 minutes while delivering 20 watts

Applications

- AM/FM
- multi-carrier amplification
- broadband swept signal
- feed forward
- linear pulse



LZY-2X+

LZY-2+

CASE STYLE: BT451

Connectors	Model	Price	Qty.
SMA	LZY-2+	\$2195.00 ea.	(1-9)
SMA	LZY-2X+	\$2095.00 ea.	(1-9)

+ RoHS compliant in accordance with EU Directive (2002/95/EC)

The +Suffix has been added in order to identify RoHS Compliance. See our web site for RoHS Compliance methodologies and qualifications.

High Power Amplifier Electrical Specifications

MODEL NO.	FREQUENCY (MHz)		GAIN (dB)		MAXIMUM POWER (dBm)			DYNAMIC RANGE		VSWR (:1)		DC POWER	
	f _l	f _u	Min.	Flatness Max.	Output (1 dB Compr.) Min.	Typ.	Input (no damage)	NF (dB) Typ.	IP3 (dBm) Typ.	In	Out	Volt (V) Nom.	Current** (A) Max.
LZY-2+	500	1000	40	±1.5	+43	+45	+10	8.0	+54	2.0	3.5	+28	8.0
LZY-2X+*	500	1000	40	±1.5	+43	+45	+10	8.0	+54	2.0	3.5	+28	8.0

* Heat sink and fan not included

**At 20W output including operation of fan.

Open load is not recommended, potentially can cause damage.

To order without heat sink and fan, add suffix-X to model number. Alternative heat sinking and heat removal must be provided by customer to ensure proper performance. See application note AN-60-004.

Maximum Ratings

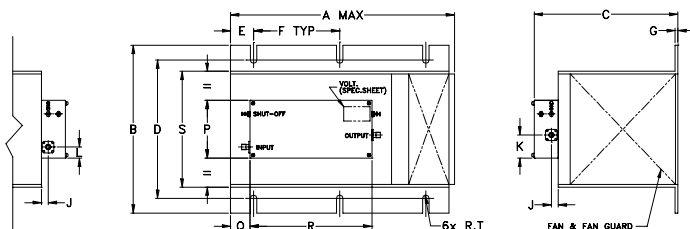
Operating Temperature -10°C to 50°C

Storage Temperature -55°C to 100°C

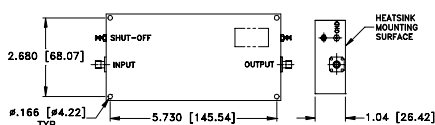
DC Voltage +30V Max.

Permanent damage may occur if any of these limits are exceeded.

Outline Drawing



MOUNTING INFORMATION FOR MODELS WITHOUT HEATSINK



Outline Dimensions (inch/mm)

A	B	C	D	E	F	G	H	J	K	L	M	N	P	Q	R	S	T	wt
9.85	7.3	6.3	6.0	.98	3.75	.13	—	.31	1.48	1.48	—	—	2.95	.5	6.00	5.1	.135	grams*
250.19	185.42	160.02	152.40	24.89	95.25	3.30	—	7.87	37.59	37.59	—	—	74.93	12.70	152.40	129.54	3.43	4130

*455 grams without heatsink

Mini-Circuits
ISO 9001 ISO 14001 AS 9100 CERTIFIED

P.O. Box 350166, Brooklyn, New York 11235-0003 (718) 934-4500 Fax (718) 332-4661 The Design Engineers Search Engine Provides ACTUAL Data Instantly at minicircuits.com

IF/RF MICROWAVE COMPONENTS

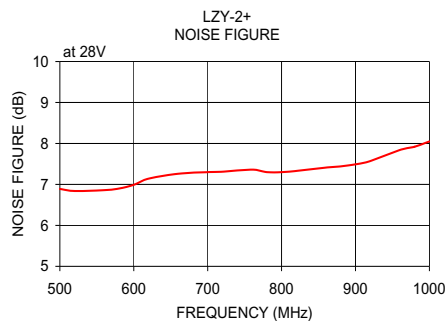
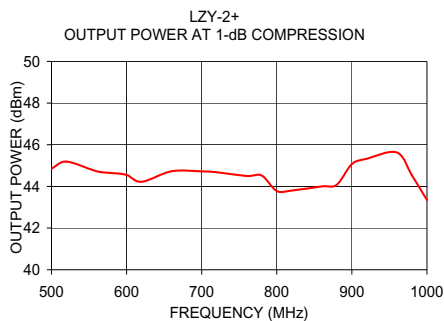
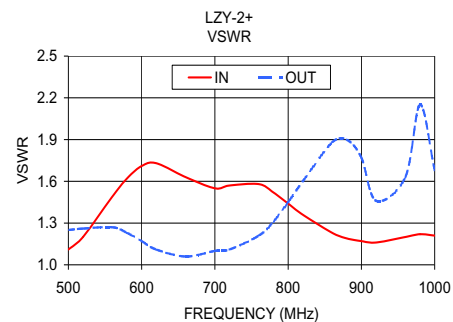
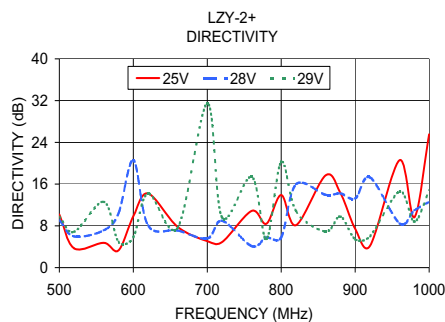
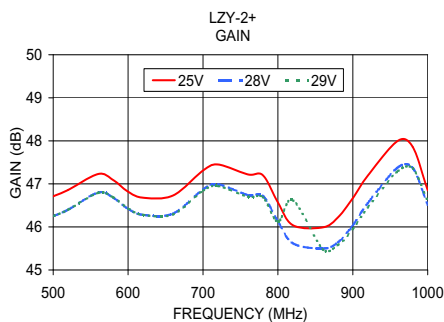
For detailed performance specs & shopping online see web site

Notes: 1. Performance and quality attributes and conditions not expressly stated in this specification sheet are intended to be excluded and do not form a part of this specification sheet. 2. Electrical specifications and performance data contained herein are based on Mini-Circuits' applicable established test performance criteria and measurement instructions. 3. The parts covered by this specification sheet are subject to Mini-Circuits standard limited warranty and terms and conditions (collectively, "Standard Terms"); Purchasers of this part are entitled to the rights and benefits contained therein. For a full statement of the Standard Terms and the exclusive rights and remedies thereunder, please visit Mini-Circuits' website at www.minicircuits.com/MCLStore/terms.jsp.

Typical Performance Data/Curves

LZY-2+

FREQUENCY (MHz)	GAIN (dB)			DIRECTIVITY (dB)			VSWR (:1)		POUT at 1 dB COMPR. (dBm)	NOISE FIGURE (dB)
	25V	28V	29V	25V	28V	29V	IN	OUT		
500.00	46.71	46.25	46.25	10.19	9.10	9.74	1.11	1.25	44.85	6.89
520.00	46.86	46.40	46.40	3.69	5.99	6.85	1.20	1.26	45.19	6.84
560.00	47.23	46.80	46.79	4.75	7.13	12.62	1.49	1.27	44.73	6.86
580.00	47.09	46.68	46.69	3.31	10.37	4.95	1.62	1.23	44.64	6.90
600.00	46.82	46.42	46.43	9.84	20.59	5.82	1.71	1.17	44.55	6.99
620.00	46.68	46.28	46.28	14.20	8.08	14.23	1.73	1.11	44.22	7.14
660.00	46.73	46.31	46.29	7.80	7.12	7.68	1.63	1.06	44.73	7.26
700.00	47.31	46.87	46.84	5.07	5.58	31.47	1.55	1.10	44.72	7.30
720.00	47.45	46.99	46.95	4.89	8.97	9.59	1.57	1.11	44.68	7.31
760.00	47.22	46.74	46.70	10.86	4.13	17.40	1.58	1.21	44.50	7.36
780.00	47.20	46.72	46.69	8.41	5.76	5.47	1.52	1.31	44.52	7.30
800.00	46.57	46.13	46.12	13.90	5.77	20.27	1.44	1.45	43.78	7.30
820.00	46.04	45.62	46.62	8.14	15.95	10.83	1.36	1.60	43.80	7.33
860.00	45.99	45.50	45.48	17.67	13.95	6.92	1.23	1.88	44.00	7.41
880.00	46.22	45.64	45.58	14.30	14.22	9.78	1.19	1.90	44.08	7.44
900.00	46.67	46.04	45.95	7.45	13.25	5.41	1.17	1.77	45.07	7.49
920.00	47.19	46.55	46.45	4.18	17.28	6.01	1.16	1.46	45.33	7.57
960.00	48.00	47.38	47.29	20.58	8.48	14.53	1.20	1.63	45.63	7.84
980.00	47.86	47.37	47.36	9.66	10.95	8.83	1.22	2.15	44.53	7.92
1000.00	46.85	46.51	46.60	25.54	12.59	14.78	1.21	1.68	43.35	8.05



For detailed performance specs & shopping online see web site

P.O. Box 350166, Brooklyn, New York 11235-0003 (718) 934-4500 Fax (718) 332-4661 The Design Engineers Search Engine Provides ACTUAL Data Instantly at minicircuits.com

Notes: 1. Performance and quality attributes and conditions not expressly stated in this specification sheet are intended to be excluded and do not form a part of this specification sheet. 2. Electrical specifications and performance data contained herein are based on Mini-Circuit's applicable established test performance criteria and measurement instructions. 3. The parts covered by this specification sheet are subject to Mini-Circuits standard limited warranty and terms and conditions (collectively, "Standard Terms"); Purchasers of this part are entitled to the rights and benefits contained therein. For a full statement of the Standard Terms and the exclusive rights and remedies thereunder, please visit Mini-Circuits' website at www.minicircuits.com/MCLStore/terms.jsp.