

# Surface Mount Frequency Mixer

## LRMS-5H+ LRMS-5H

Level 17 (LO Power +17dBm) 10 to 1500 MHz



### Maximum Ratings

Operating Temperature	-40°C to 85°C
Storage Temperature	-55°C to 100°C
RF Power	200mW
IF Current	40mA
Permanent damage may occur if any of these limits are exceeded.	

### Pin Connections

LO	1
RF	4
IF	5
GROUND	2,3,6

### Features

- low conversion loss, 6.36 dB typ.
- good L-R isolation, 36 dB typ.

### Applications

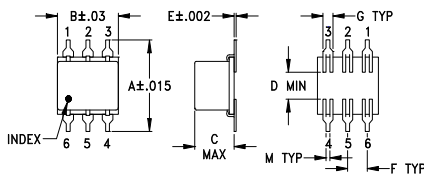
- cellular
- satellite distribution
- VHF/UHF

CASE STYLE: QQQ130  
PRICE: \$17.95 ea. QTY (1-9)

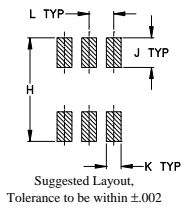
**+ RoHS compliant in accordance with EU Directive (2002/95/EC)**

The +Suffix identifies RoHS Compliance. See our web site for RoHS Compliance methodologies and qualifications.

### Outline Drawing



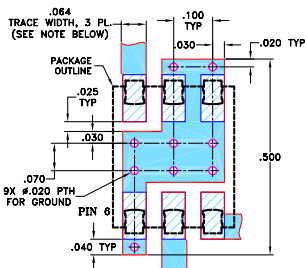
### PCB Land Pattern



### Outline Dimensions (inch/mm)

A	B	C	D	E	F	G
.400	.31	.200	.10	.010	.100	.050
10.16	7.87	5.08	2.54	0.25	2.54	1.27
H	J	K	L	M	wt	
.420	.120	.060	.100	.020	grams	
10.67	3.05	1.52	2.54	0.51	0.55	

### Demo Board MCL P/N: TB-44+ Suggested PCB Layout (PL-083)



- NOTES: 1. TRACE WIDTH IS SHOWN FOR ROGERS R04350B WITH DIELECTRIC THICKNESS 0.030" ± 0.002"; COPPER: 1/2 OZ. EACH SIDE. FOR OTHER MATERIALS TRACE WIDTH MAY NEED TO BE MODIFIED.  
2. BOTTOM SIDE OF THE PCB IS CONTINUOUS GROUND PLANE.  
■ DENOTES PCB COPPER LAYOUT WITH SMOBC (SOLDER MASK OVER BARE COPPER)  
▨ DENOTES COPPER LAND PATTERN FREE OF SOLDER MASK

### Electrical Specifications

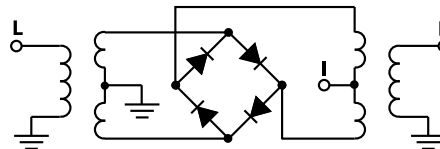
FREQUENCY (MHz)	CONVERSION LOSS (dB)	LO-RF ISOLATION (dB)			LO-IF ISOLATION (dB)			IP3 at center band (dBm)										
		L	M	U	L	M	U											
10-1500	DC-900	6.36	.05	8.0	9.8	65	40	36	20	22	15	50	30	30	18	17	7	22

1 dB COMP.: +14 dBm typ. L = low range [ $f_L$  to  $10 f_L$ ] M = mid range [ $10 f_L$  to  $f_U/2$ ] U = upper range [ $f_U/2$  to  $f_U$ ]

### Typical Performance Data

Frequency (MHz)		Conversion Loss (dB)	Isolation L-R (dB)	Isolation L-I (dB)	VSWR RF Port (:1)	VSWR LO Port (:1)
RF	LO	LO +17dBm	LO +17dBm	LO +17dBm	LO +17dBm	LO +17dBm
10.00	40.00	6.95	70.78	61.92	2.20	1.53
20.00	50.00	6.58	65.19	63.52	1.63	1.56
50.00	80.00	6.34	58.27	59.11	1.47	1.51
100.00	70.00	6.16	57.50	49.97	1.49	1.50
149.69	119.69	6.25	57.97	51.05	1.52	1.49
200.00	170.00	6.35	58.46	44.60	1.57	1.47
289.38	259.38	6.44	45.97	40.19	1.66	1.45
429.06	399.06	6.52	35.99	40.36	1.85	1.48
500.00	470.00	6.57	33.86	35.13	1.96	1.52
568.75	538.75	6.70	31.80	31.81	2.07	1.65
708.44	678.44	7.17	28.34	25.09	2.42	1.79
750.00	720.00	7.33	27.82	23.34	2.56	1.80
848.13	818.13	7.63	27.14	20.18	2.79	1.94
987.81	957.81	7.85	25.28	17.43	2.98	2.02
1000.00	970.00	7.86	25.09	16.91	3.00	2.12
1127.50	1097.50	7.96	23.28	14.89	3.16	2.21
1267.19	1237.19	8.09	21.51	13.36	3.15	2.57
1406.88	1376.88	8.10	20.40	11.73	2.97	2.82
1453.44	1423.44	8.28	20.09	11.57	2.99	2.97
1500.00	1470.00	8.50	19.62	11.46	2.94	3.15

### Electrical Schematic



**Mini-Circuits®**  
ISO 9001 ISO 14001 AS 9100 CERTIFIED  
The Design Engineers Search Engine Provides ACTUAL Data Instantly at [minicircuits.com](http://minicircuits.com)

For detailed performance specs & shopping online see web site

P.O. Box 350166, Brooklyn, New York 11235-0003 (718) 934-4500 Fax (718) 332-4661

Notes: 1. Performance and quality attributes and conditions not expressly stated in this specification sheet are intended to be excluded and do not form a part of this specification sheet. 2. Electrical specifications and performance data contained herein are based on Mini-Circuit's applicable established test performance criteria and measurement instructions. 3. The parts covered by this specification sheet are subject to Mini-Circuit's standard limited warranty and terms and conditions (collectively, "Standard Terms"); Purchasers of this part are entitled to the rights and benefits contained therein. For a full statement of the Standard Terms and the exclusive rights and remedies thereunder, please visit Mini-Circuit's website at [www.minicircuits.com/MCLStore/terms.jsp](http://www.minicircuits.com/MCLStore/terms.jsp).

## Performance Charts

