

Surface Mount Low Pass Filter

LPF-B0R35+

50Ω DC to 0.35 MHz

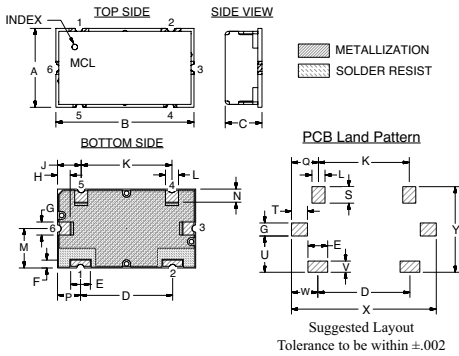
Maximum Ratings

Operating Temperature	-40°C to 85°C
Storage Temperature	-55°C to 100°C
RF Power Input	0.25W Max

Pin Connections

INPUT	1
OUTPUT	2
GROUND	3, 4, 5, 6

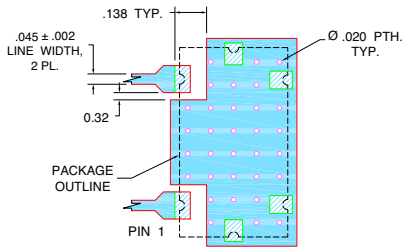
Outline Drawing



Outline Dimensions (inch/mm)

A	B	C	D	E	F	G	H	J	K	L	M
.472	.826	.220	.551	.118	.047	.078	.076	.142	.543	.078	.236
11.99	20.98	5.59	14.00	3.00	1.19	1.98	1.92	3.59	13.79	1.98	5.99
N	P	Q	S	T	U	V	W	X	Y	wt	
.079	.138	.162	.098	.096	.217	.067	.157	.866	.512	grams	
1.99	3.49	4.11	2.49	2.44	5.51	1.70	3.99	22.00	13.00	6	

Demo Board MCL P/N: TB-400+ Suggested PCB Layout (PL-247)



- NOTES:
- TRACE WIDTH IS SHOWN FOR FR4 WITH DIELECTRIC THICKNESS .025" ± .002". COPPER: 1/2 OZ. EACH SIDE. FOR OTHER MATERIALS TRACE WIDTH MAY NEED TO BE MODIFIED.
 - BOTTOM SIDE OF THE PCB IS CONTINUOUS GROUND PLANE.
- DENOTES PCB COPPER LAYOUT WITH SMOBC (SOLDER MASK OVER BARE COPPER)
 - DENOTES COPPER LAND PATTERN FREE OF SOLDER MASK

Features

- High rejection
- Good VSWR, 1.2:1 Typ @ Passband
- Shielded case
- Aqueous washable

Applications

- CDMA
- Cellular Infrastructure
- Wireless communications
- Receivers / Transmitters



CASE STYLE: HZ1198
PRICE: \$9.35 ea. QTY (1-9)

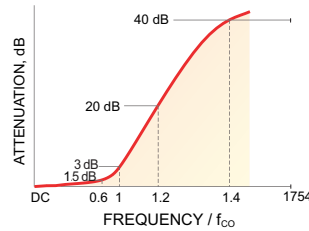
+ RoHS compliant in accordance with EU Directive (2002/95/EC)

The +Suffix has been added in order to identify RoHS Compliance. See our web site for RoHS Compliance methodologies and qualifications.

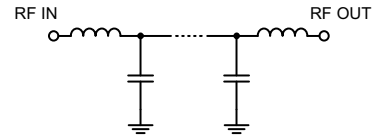
Low Pass Filter Electrical Specifications (T_{AMB} = 25°C)

PASSBAND (MHz)	f _{co} , MHz Nom.	STOPBAND (MHz)		VSWR (:1)	
		(Loss < 1.5dB)	(Loss > 20dB)	(Loss > 40dB)	Passband Typ.
DC - 0.35	0.57	0.70 - 0.79	0.79 - 1000	1.2	20

Typical Frequency Response

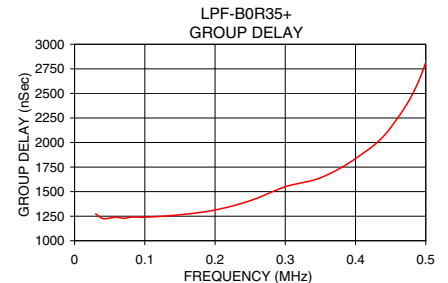
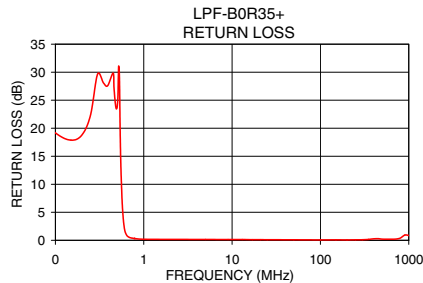
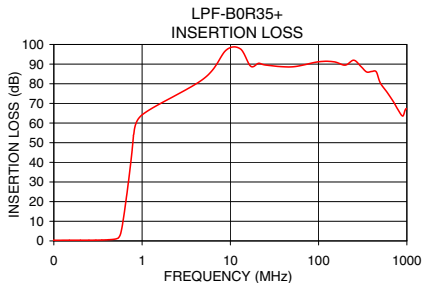


Functional Schematic



Typical Performance Data at 25°C

Frequency (MHz)	Insertion Loss (dB)		Return Loss (dB)	Frequency (MHz)	Group Delay (nSec.)
	\bar{x}	σ			
0.03	0.35	0.02	25.99	0.03	1272.71
0.10	0.33	0.01	18.77	0.05	1230.57
0.20	0.35	0.01	18.25	0.07	1227.66
0.30	0.39	0.01	31.07	0.09	1240.17
0.35	0.46	0.01	34.46	0.11	1244.48
0.39	0.54	0.01	32.08	0.13	1249.43
0.54	1.59	0.15	14.88	0.17	1279.00
0.57	3.62	0.56	5.68	0.20	1313.11
0.59	6.54	0.85	2.82	0.23	1366.08
0.62	12.51	1.01	1.20	0.25	1408.28
0.66	21.26	1.04	0.61	0.27	1438.54
0.70	29.95	1.08	0.44	0.30	1549.84
0.79	51.11	1.62	0.29	0.33	1579.06
1.00	64.18	1.23	0.20	0.35	1641.22
5.00	82.63	2.99	0.14	0.37	1695.07
100.00	91.19	6.08	0.07	0.40	1836.86
500.00	80.42	1.93	0.20	0.45	2152.05
1000.00	67.27	1.21	0.91	0.50	2816.55



Mini-Circuits®
ISO 9001 ISO 14001 CERTIFIED

ALL NEW
minicircuits.com

P.O. Box 350166, Brooklyn, New York 11235-0003 (718) 934-4500 Fax (718) 332-4661 For detailed performance specs & shopping online see Mini-Circuits web site



The Design Engineers Search Engine Provides ACTUAL Data Instantly From MINI-CIRCUITS At: www.minicircuits.com

RF/IF MICROWAVE COMPONENTS

REV. OR
M119635
EDR-9416U
LPF-B0R35+
URJ/RAV
080919
Page 1 of 1