

Surface Mount Low Pass Filter

LPF-B0R3+

50Ω DC to 0.3 MHz

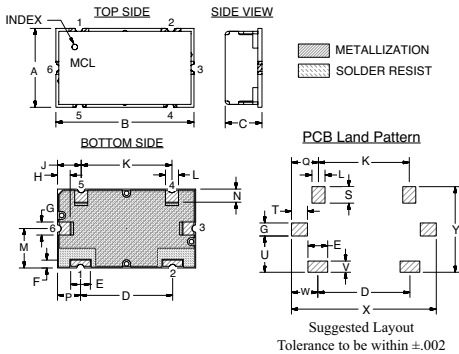
Maximum Ratings

Operating Temperature	-40°C to 85°C
Storage Temperature	-55°C to 100°C
RF Power Input	0.25W Max

Pin Connections

INPUT	1
OUTPUT	2
GROUND	3, 4, 5, 6

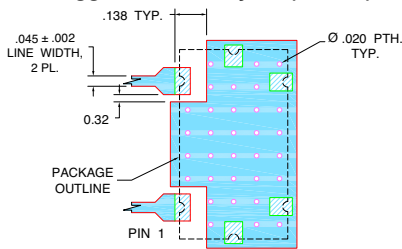
Outline Drawing



Outline Dimensions (inch/mm)

A	B	C	D	E	F	G	H	J	K	L	M
.472	.826	.220	.551	.118	.047	.078	.076	.142	.543	.078	.236
11.99	20.98	5.59	14.00	3.00	1.19	1.98	1.92	3.59	13.79	1.98	5.99
N	P	Q	S	T	U	V	W	X	Y	wt	
.079	.138	.162	.098	.096	.217	.067	.157	.866	.512	grams	
1.99	3.49	4.11	2.49	2.44	5.51	1.70	3.99	22.00	13.00	6	

Demo Board MCL P/N: TB-400+ Suggested PCB Layout (PL-247)



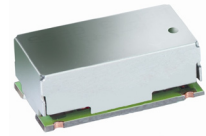
- NOTES:
- TRACE WIDTH IS SHOWN FOR FR4 WITH DIELECTRIC THICKNESS .025" ± .002". COPPER: 1/2 OZ. EACH SIDE. FOR OTHER MATERIALS TRACE WIDTH MAY NEED TO BE MODIFIED.
 - BOTTOM SIDE OF THE PCB IS CONTINUOUS GROUND PLANE.
- DENOTES PCB COPPER LAYOUT WITH SMOBC (SOLDER MASK OVER BARE COPPER)
 - DENOTES COPPER LAND PATTERN FREE OF SOLDER MASK

Features

- High rejection
- Good VSWR, 1.1:1 Typ @ Passband
- Shielded case
- Aqueous washable

Applications

- CDMA
- Cellular Infrastructure
- Wireless communications
- Receivers / Transmitters



CASE STYLE: HZ1198
PRICE: \$9.35 ea. QTY (1-9)

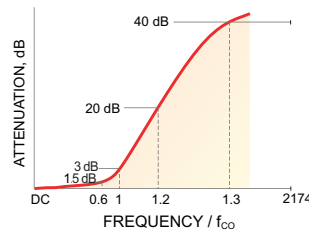
+ RoHS compliant in accordance with EU Directive (2002/95/EC)

The +Suffix has been added in order to identify RoHS Compliance. See our web site for RoHS Compliance methodologies and qualifications.

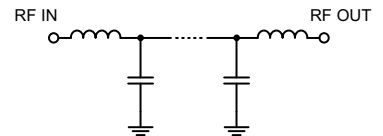
Low Pass Filter Electrical Specifications (T_{AMB} = 25°C)

PASSBAND (MHz)	f _{co} , MHz Nom.	STOPBAND (MHz)		VSWR (:1)	
		(Loss > 20dB)	(Loss > 40dB)	Passband Typ.	Stopband Typ.
DC - 0.3	0.46	0.56 - 0.61	0.61 - 1000	1.1	20

Typical Frequency Response

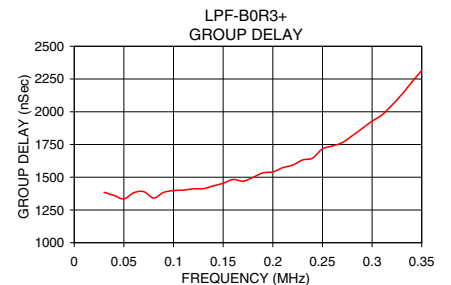
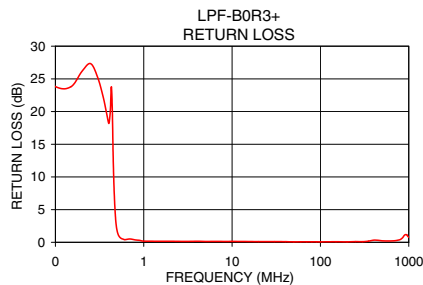
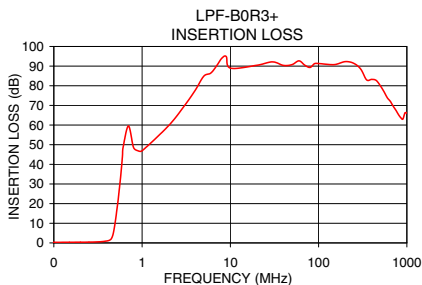


Functional Schematic



Typical Performance Data at 25°C

Frequency (MHz)	Insertion Loss (dB)		Return Loss (dB)	Frequency (MHz)	Group Delay (nSec.)
	\bar{x}	σ			
0.03	0.29	0.01	28.67	0.03	1384.70
0.10	0.30	0.01	23.82	0.04	1361.83
0.20	0.35	0.01	26.16	0.06	1382.14
0.25	0.41	0.01	27.33	0.08	1341.45
0.30	0.50	0.02	25.27	0.10	1398.44
0.40	0.98	0.05	18.24	0.12	1411.94
0.44	1.72	0.20	20.55	0.14	1434.06
0.46	3.19	0.61	8.72	0.16	1482.90
0.48	6.54	1.17	3.63	0.18	1498.91
0.51	14.40	1.54	1.30	0.20	1541.11
0.56	29.92	1.76	0.57	0.22	1592.50
0.61	48.66	2.72	0.40	0.24	1646.40
1.00	46.91	0.36	0.18	0.25	1716.60
5.00	84.85	4.62	0.13	0.27	1764.39
10.00	88.96	3.00	0.14	0.29	1872.25
100.00	91.34	5.90	0.07	0.30	1928.42
500.00	79.98	7.69	0.23	0.32	2050.42
1000.00	66.18	1.40	0.80	0.35	2316.43



Mini-Circuits
ISO 9001 ISO 14001 CERTIFIED

ALL NEW
minicircuits.com

P.O. Box 350166, Brooklyn, New York 11235-0003 (718) 934-4500 Fax (718) 332-4661 For detailed performance specs & shopping online see Mini-Circuits web site



The Design Engineers Search Engine Provides ACTUAL Data Instantly From MINI-CIRCUITS At: www.minicircuits.com

RF/IF MICROWAVE COMPONENTS

REV. OR
M119635
EDR-9415U
LPF-B0R3+
URJ/RAV
080919
Page 1 of 1