

Surface Mount Frequency Mixer

JYM-28H+ JYM-28H

Level 17 (LO Power +17 dBm) 400 to 2800 MHz



Maximum Ratings

Operating Temperature	-40°C to 85°C
Storage Temperature	-55°C to 100°C
RF Power	200mW
IF Current	40mA
Permanent damage may occur if any of these limits are exceeded.	

Pin Connections

LO	5
RF	1
IF	7
GROUND	2,3,4,6,8

Features

- wide bandwidth, 400 to 2800 MHz
- good IP3, 23 dBm typ.
- high L-R isolation, 40 dB typ.

Applications

- cellular
- satellite distribution
- PCS, DCS, UMTS
- MMDS

CASE STYLE: BJ293
PRICE: \$21.95 ea. QTY (1-9)

+ RoHS compliant in accordance with EU Directive (2002/95/EC)

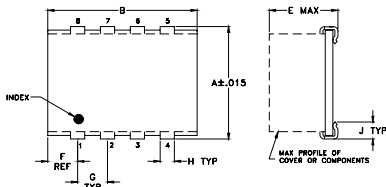
The +Suffix identifies RoHS Compliance. See our web site for RoHS Compliance methodologies and qualifications.

Electrical Specifications

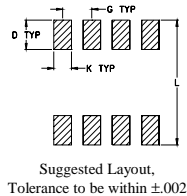
FREQUENCY (MHz)	CONVERSION LOSS (dB)	LO-RF ISOLATION (dB)		LO-IF ISOLATION (dB)		IP3 at center band (dBm)				
		Typ.	Min.	Typ.	Min.					
400-2800	4-700	6.3	.20	8.0	9.0	40	25	30	15	23

1 dB COMP: +10 dBm typ.
m=mid band [2f_L to f_H/2]

Outline Drawing



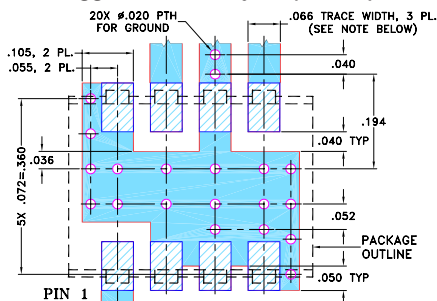
PCB Land Pattern



Outline Dimensions (inch/mm)

A	B	C	D	E	F	G	H	J	K	L	wt
.395	.500	--	.100	.230	.100	.100	.047	.065	.065	.425	grams
10.03	12.70	--	2.54	5.84	2.54	2.54	1.19	1.65	1.65	10.80	0.80

Demo Board MCL P/N: TB-259 Suggested PCB Layout (PL-080)



- DENOTES PCB COPPER LAYOUT WITH SMOBC (SOLDER MASK OVER BARE COPPER)
- DENOTES COPPER LAND PATTERN FREE OF SOLDERMASK

P.O. Box 350166, Brooklyn, New York 11235-0003 (718) 934-4500 Fax (718) 332-4661 The Design Engineers Search Engine

Mini-Circuits
ISO 9001 ISO 14001 AS 9100 CERTIFIED



Provides ACTUAL Data Instantly at minicircuits.com

IF/RF MICROWAVE COMPONENTS

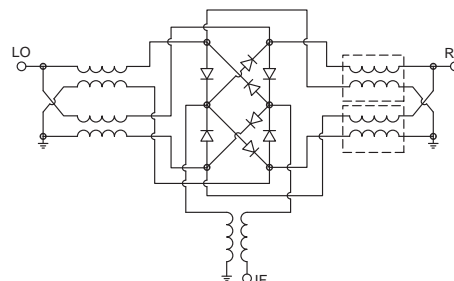
For detailed performance specs & shopping online see web site

Notes: 1. Performance and quality attributes and conditions not expressly stated in this specification sheet are intended to be excluded and do not form a part of this specification sheet. 2. Electrical specifications and performance data contained herein are based on Mini-Circuits' applicable established test performance criteria and measurement instructions. 3. The parts covered by this specification sheet are subject to Mini-Circuits standard limited warranty and terms and conditions (collectively, "Standard Terms"); Purchasers of this part are entitled to the rights and benefits contained therein. For a full statement of the Standard Terms and the exclusive rights and remedies thereunder, please visit Mini-Circuits' website at www.minicircuits.com/MCLStore/terms.jsp.

Typical Performance Data

Frequency (MHz)	Conversion Loss (dB)	Isolation L-R (dB)	Isolation L-I (dB)	VSWR RF Port (:1)	VSWR LO Port (:1)	
						LO +17dBm
400.00	430.00	6.35	39.96	42.42	1.21	2.00
535.85	565.85	6.15	39.94	40.97	1.38	1.68
671.70	701.70	6.13	39.08	39.25	1.60	1.53
800.00	830.00	6.36	39.17	39.90	1.78	1.43
943.40	973.40	6.03	37.63	38.28	2.01	1.41
1079.25	1109.25	5.82	37.76	38.87	2.21	1.39
1169.81	1199.81	5.76	36.05	39.48	2.31	1.37
1260.38	1290.38	5.78	35.62	40.30	2.28	1.36
1400.00	1430.00	5.83	33.66	40.46	2.46	1.32
1486.79	1516.79	5.96	33.40	40.25	2.52	1.33
1622.64	1652.64	6.05	33.61	40.84	2.61	1.35
1713.21	1683.21	6.22	34.09	41.86	2.70	1.35
1803.77	1773.77	6.41	36.18	41.43	2.77	1.36
1984.91	1954.91	6.36	38.60	49.09	2.85	1.37
2075.47	2045.47	6.23	36.96	45.57	2.87	1.40
2211.32	2181.32	6.17	37.30	45.52	2.80	1.54
2347.17	2317.17	6.42	35.31	42.38	2.63	1.75
2483.02	2453.02	6.71	35.03	48.65	2.42	2.06
2618.87	2588.87	7.05	34.27	36.72	2.13	2.36
2800.00	2770.00	8.39	31.73	33.90	1.98	2.80

Electrical Schematic



REV. B
M102713
JYM-28H
EDR-1815
DJ/TD/CP/AM
061228
Page 1 of 2

Performance Charts

