

Surface Mount Frequency Mixer

JMS-1H+ JMS-1H

Level 17 (LO Power +17 dBm) 2 to 500 MHz



Maximum Ratings

Operating Temperature	-40°C to 85°C
Storage Temperature	-55°C to 100°C
RF Power	200mW
IF Current	40mA
Permanent damage may occur if any of these limits are exceeded.	

Pin Connections

LO	6
RF	3
IF	2
GROUND	1,4,5

Features

- low conversion loss, 5.90 dB typ.
- excellent L-R isolation, up to 60 dB typ.
- miniature surface mount
- J-leads for strain relief and excellent solderability

Applications

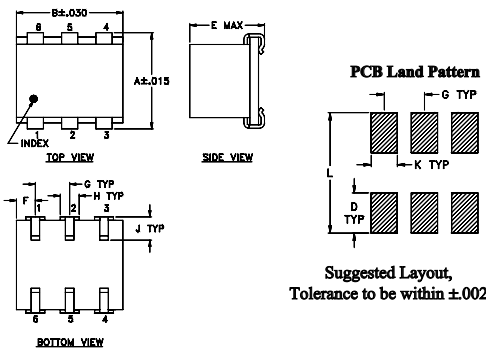
- up & down converters for receivers & transmitters
- VHF/UHF

CASE STYLE: BH292
PRICE: \$11.45 ea. QTY (1-9)

+ RoHS compliant in accordance with EU Directive (2002/95/EC)

The +Suffix identifies RoHS Compliance. See our web site for RoHS Compliance methodologies and qualifications.

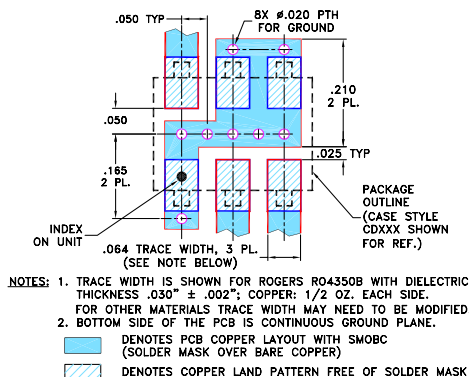
Outline Drawing



Outline Dimensions (inch/mm)

A	B	C	D	E	F	G		
.280	.310	--	.100	.225	.055	.100		
7.11	7.87	--	2.54	5.72	1.40	2.54		
H	J	K	L				wt	
.047	.065	.065	.300				grams	
1.19	1.65	1.65	7.62				0.45	

Demo Board MCL P/N: TB-03 Suggested PCB Layout (PL-052)



Electrical Specifications

FREQUENCY (MHz)	CONVERSION LOSS (dB)	LO-RF ISOLATION (dB)			LO-IF ISOLATION (dB)			IP3 at center band (dBm)										
		L	M	U	L	M	U											
2-500	DC-500	5.90	.10	7.0	8.5	60	45	50	25	37	22	55	45	50	25	37	22	22

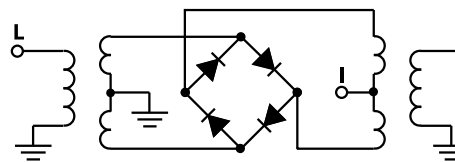
1 dB COMP.: +14 dBm typ.

L = low range [f_l to $10 f_l$]
M = mid band [$2 f_l$ to $f_l/2$]
U = upper range [$f_l/2$ to f_l]

Typical Performance Data

Frequency (MHz)	Conversion Loss (dB)	Isolation L-R (dB)	Isolation L-I (dB)	VSWR RF Port (:1)	VSWR LO Port (:1)
2.00	32.00	6.78	79.29	1.33	1.77
4.00	34.00	6.60	72.35	1.20	1.75
5.00	35.00	6.57	71.51	1.15	1.82
10.00	40.00	6.55	65.84	1.14	1.82
20.00	50.00	6.48	59.50	1.13	1.75
35.20	65.20	6.36	51.64	1.14	1.75
50.00	80.00	6.53	51.61	1.14	1.76
85.00	55.00	6.47	45.13	1.15	1.74
100.00	70.00	6.48	44.98	1.17	1.71
134.80	104.80	6.32	41.19	1.19	1.69
184.60	154.60	6.35	38.78	1.22	1.65
200.00	170.00	6.40	38.62	1.23	1.62
234.40	204.40	6.30	36.44	1.24	1.63
250.00	220.00	6.22	36.14	1.26	1.62
284.20	254.20	6.22	35.11	1.30	1.58
334.00	304.00	6.18	33.38	1.34	1.54
383.80	353.80	6.11	32.33	1.39	1.51
433.60	403.60	6.16	32.22	1.44	1.45
483.40	453.40	6.45	31.29	1.47	1.41
500.00	470.00	6.45	30.80	1.49	1.39

Electrical Schematic



Mini-Circuits
ISO 9001 ISO 14001 AS 9100 CERTIFIED

For detailed performance specs & shopping online see web site

P.O. Box 350166, Brooklyn, New York 11235-0003 (718) 934-4500 Fax (718) 332-4661 The Design Engineers Search Engine Provides ACTUAL Data Instantly at minicircuits.com

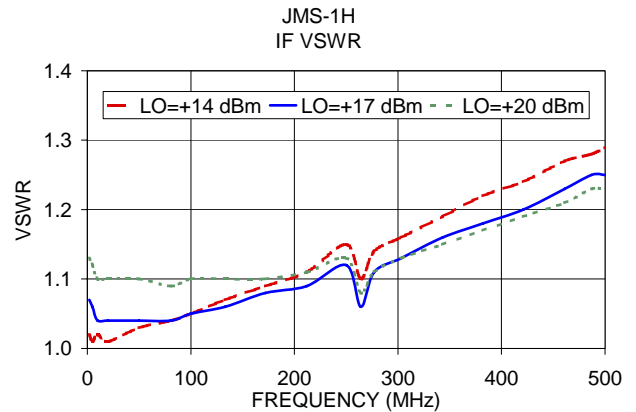
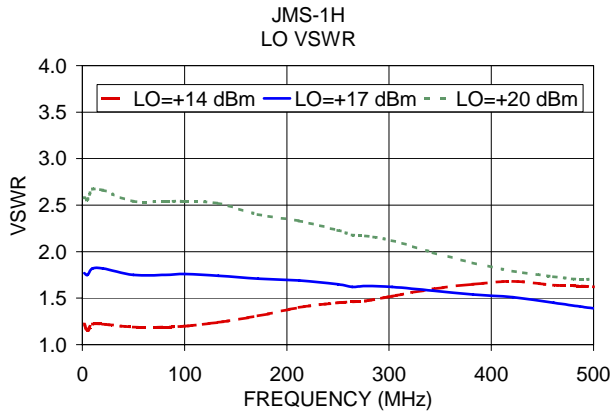
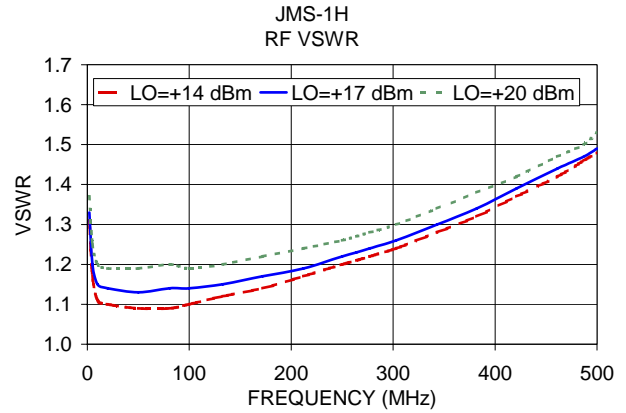
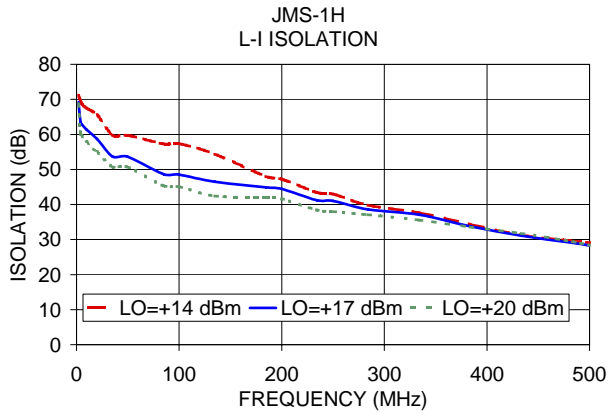
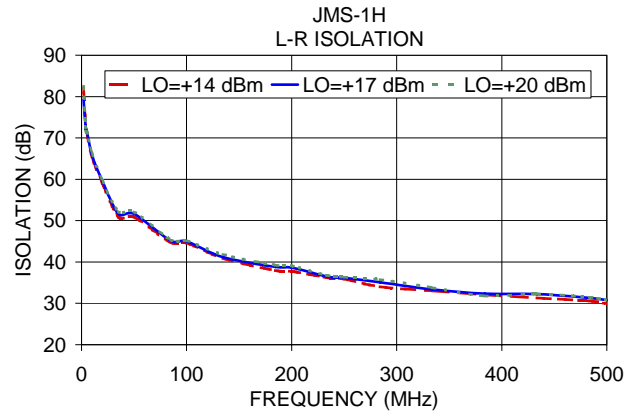
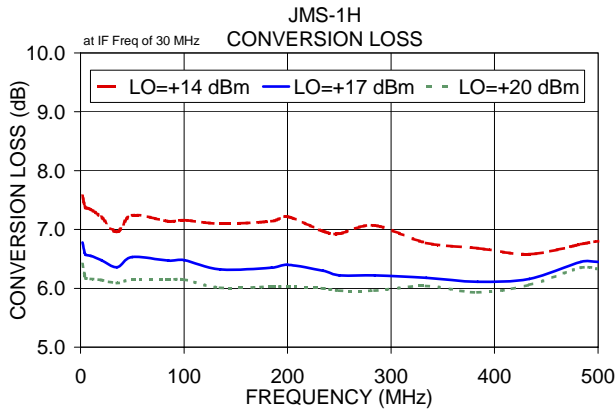
IF/RF MICROWAVE COMPONENTS

Notes: 1. Performance and quality attributes and conditions not expressly stated in this specification sheet are intended to be excluded and do not form a part of this specification sheet. 2. Electrical specifications and performance data contained herein are based on Mini-Circuits' applicable established test performance criteria and measurement instructions. 3. The parts covered by this specification sheet are subject to Mini-Circuits standard limited warranty and terms and conditions (collectively, "Standard Terms"); Purchasers of this part are entitled to the rights and benefits contained therein. For a full statement of the Standard Terms and the exclusive rights and remedies thereunder, please visit Mini-Circuits' website at www.minicircuits.com/MCLStore/terms.jsp.

REV. B
M102713
JMS-1H
ED-3195/1
DJ/CP/AM
061228
Page 1 of 2

Performance Charts

JMS-1H+ JMS-1H



ISO 9001 ISO 14001 AS 9100 CERTIFIED

P.O. Box 350166, Brooklyn, New York 11235-0003 (718) 934-4500 Fax (718) 332-4661 The Design Engineers Search Engine Provides ACTUAL Data Instantly at minicircuits.com

IF/RF MICROWAVE COMPONENTS

For detailed performance specs & shopping online see web site

Notes: 1. Performance and quality attributes and conditions not expressly stated in this specification sheet are intended to be excluded and do not form a part of this specification sheet. 2. Electrical specifications and performance data contained herein are based on Mini-Circuit's applicable established test performance criteria and measurement instructions. 3. The parts covered by this specification sheet are subject to Mini-Circuits standard limited warranty and terms and conditions (collectively, "Standard Terms"); Purchasers of this part are entitled to the rights and benefits contained therein. For a full statement of the Standard Terms and the exclusive rights and remedies thereunder, please visit Mini-Circuits' website at www.minicircuits.com/MCLStore/terms.jsp.