

# Bandpass Filter

## JCBP-43+

50Ω 26 to 60 MHz

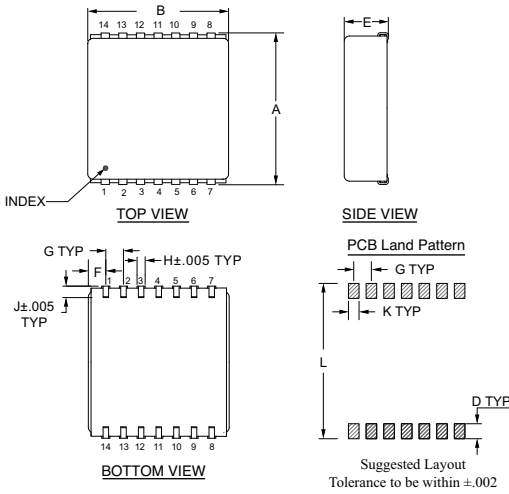
### Maximum Ratings

Operating Temperature	-40°C to 85°C
Storage Temperature	-55°C to 100°C
RF Power Input	0.5W

### Pin Connections

INPUT	2
OUTPUT	9
GROUND	1,3,4,5,6,7,8,10,11,12,13,14

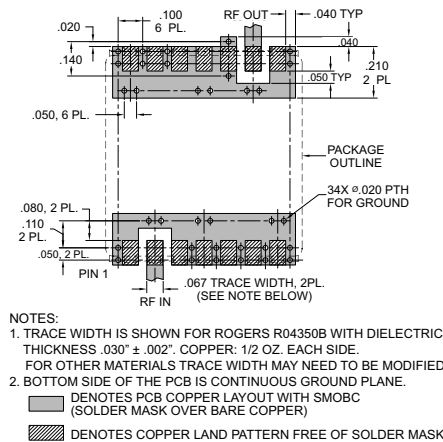
### Outline Drawing



### Outline Dimensions (inch/mm)

A	B	C	D	E	F
.870	.800	--	.100	.250	.100
22.09	20.32	--	2.54	6.35	2.54
G	H	J	K	L	wt.
.100	.047	.065	.065	.890	grams
2.54	1.19	1.65	1.65	22.60	4.0

### Demo Board MCL P/N: TB-442+ Suggested PCB Layout(PL-269)



### Features

- Low I.Loss, 0.3 Typ @ Passband
- Good VSWR, 1.2:1 Typ @ Pasband
- High Stopband Rejection
- Aqueous washable

### Applications

- Harmonic Rejection
- Transmitters/Receivers
- Military communications



CASE STYLE: BG291  
PRICE: \$17.95 ea. QTY (1-9)

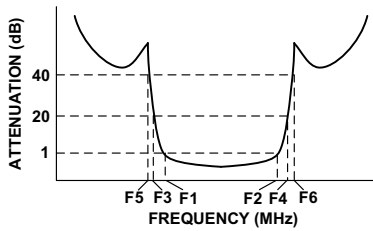
+ RoHS compliant in accordance with EU Directive (2002/95/EC)

The +Suffix has been added in order to identify RoHS Compliance. See our web site for RoHS Compliance methodologies and qualifications.

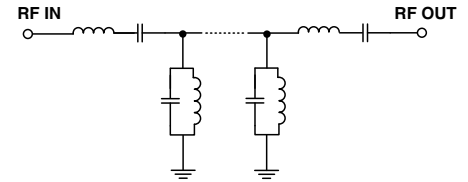
### Bandpass Filter Electrical Specifications (T<sub>AMB</sub> = 25°C)

CENTER FREQ. (MHz)	PASSBAND (MHz) (Loss < 1dB) F1 - F2	STOPBANDS (MHz)				VSWR (:1)	
		Loss > 20dB		Loss > 40dB		Passband Max.	Stopband Typ.
		F3	F4	F5	F6		
43	26 - 60	12.5	130	10	160 - 1500	1.6	20

### Typical Frequency Response



### Functional Schematic



### Typical Performance Data at 25°C

Frequency (MHz)	Insertion Loss (dB)	VSWR (:1)
5.0	97.92	1737.18
10.0	51.90	347.44
12.5	31.94	91.43
14.5	15.42	28.96
15.5	6.89	7.87
16.0	3.42	3.66
16.5	1.52	1.79
26.0	0.35	1.18
43.0	0.32	1.12
60.0	0.42	1.06
94.0	1.54	1.36
100.0	4.17	3.33
106.0	10.09	9.23
118.0	22.73	23.81
130.0	33.05	33.42
160.0	53.26	45.72
800.0	85.80	86.86
1500.0	59.08	54.29

