

Coaxial Power Splitter/Combiner

IZY2PD-64+ IZY2PD-64

2 Way-0° 50Ω 5800 to 6400 MHz



Maximum Ratings

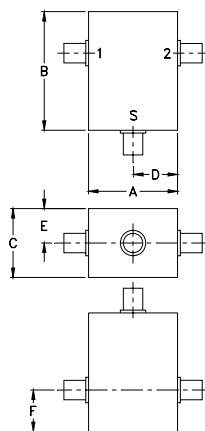
Operating Temperature	-55°C to 100°C
Storage Temperature	-55°C to 100°C
Power Input (as a splitter)	1W max.
Internal Dissipation	0.125W max.

Permanent damage may occur if any of these limits are exceeded.

Coaxial Connections

SUM PORT	S
PORT 1	1
PORT 2	2

Outline Drawing



Outline Dimensions (inch/mm)

A	B	C	D	E	F	wt
.75	1.00	.58	.38	.29	.35	grams
19.05	25.40	14.73	9.65	7.37	8.89	22.0

Features

- low insertion loss, 0.2 dB typ.
- high isolation, 35 dB typ.
- excellent input VSWR, 1.05:1 typ.
- excellent amplitude unbalance, 0.1 dB typ.
- excellent phase unbalance, 1 deg. typ.
- rugged shielded case

Applications

- SHF
- amateur radio
- communication systems

CASE STYLE: JJJ245			
Connectors	Model	Price	Qty.
SMA	IZY2PD-64(+)	\$89.95	(1-9)

+ RoHS compliant in accordance with EU Directive (2002/95/EC)

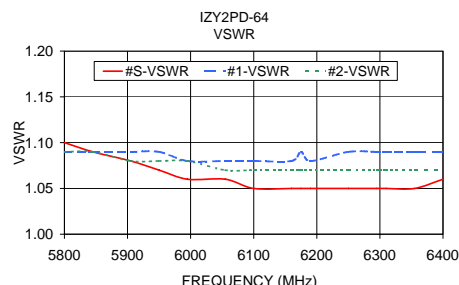
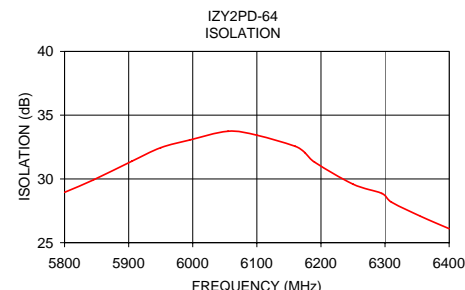
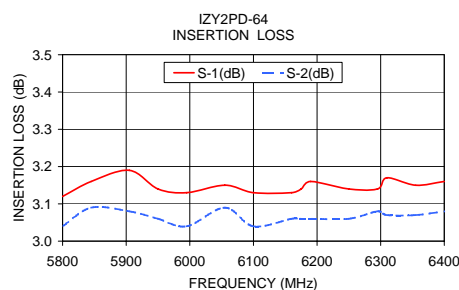
The +Suffix identifies RoHS Compliance. See our web site for RoHS Compliance methodologies and qualifications.

Electrical Specifications

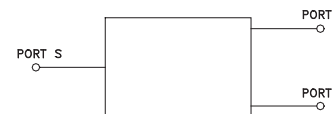
FREQ. RANGE (MHz)	ISOLATION (dB)		INSERTION LOSS (dB) ABOVE 3.0 dB		PHASE UNBALANCE (Degrees)	AMPLITUDE UNBALANCE (dB)	VSWR (:1)			
	Typ.	Min.	Typ.	Max.			S		OUT	
f_L - f_U					Max.	Max.	Typ.	Max.	Typ.	Max.
5800-6400	35	24	0.2	0.5	5	0.3	1.05	1.3	1.2	1.35

Typical Performance Data

Frequency (MHz)	Insertion Loss (dB)		Amplitude Unbalance (dB)	Isolation (dB)	Phase Unbalance (deg.)	VSWR S	VSWR 1	VSWR 2
	S-1	S-2						
5800.00	3.12	3.04	0.08	28.95	0.70	1.10	1.09	1.09
5845.00	3.16	3.09	0.07	29.92	0.49	1.09	1.09	1.09
5905.00	3.19	3.08	0.11	31.39	0.51	1.08	1.09	1.08
5950.00	3.14	3.06	0.08	32.45	0.62	1.07	1.09	1.08
5995.00	3.13	3.04	0.09	33.05	0.54	1.06	1.08	1.08
6055.00	3.15	3.09	0.06	33.74	0.53	1.06	1.08	1.07
6100.00	3.13	3.04	0.09	33.43	0.71	1.05	1.08	1.07
6160.00	3.13	3.06	0.08	32.56	0.57	1.05	1.08	1.07
6175.00	3.14	3.06	0.08	32.06	0.64	1.05	1.09	1.07
6190.00	3.16	3.06	0.10	31.32	0.41	1.05	1.08	1.07
6250.00	3.14	3.06	0.08	29.59	0.41	1.05	1.09	1.07
6295.00	3.14	3.08	0.06	28.86	0.29	1.05	1.09	1.07
6310.00	3.17	3.07	0.10	28.18	0.74	1.05	1.09	1.07
6355.00	3.15	3.07	0.08	27.08	0.66	1.05	1.09	1.07
6400.00	3.16	3.08	0.08	26.10	0.64	1.06	1.09	1.07



electrical schematic



Mini-Circuits®
ISO 9001 ISO 14001 AS 9100 CERTIFIED
IFIRF MICROWAVE COMPONENTS

For detailed performance specs & shipping online see web site

P.O. Box 350166, Brooklyn, New York 11235-0003 (718) 934-4500 Fax (718) 332-4661 The Design Engineers Search Engine Provides ACTUAL Data Instantly at minicircuits.com

Notes: 1. Performance and quality attributes and conditions not expressly stated in this specification sheet are intended to be excluded and do not form a part of this specification sheet. 2. Electrical specifications and performance data contained herein are based on Mini-Circuit's applicable established test performance criteria and measurement instructions. 3. The parts covered by this specification sheet are subject to Mini-Circuits standard limited warranty and terms and conditions (collectively, "Standard Terms"); Purchasers of this part are entitled to the rights and benefits contained therein. For a full statement of the Standard Terms and the exclusive rights and remedies thereunder, please visit Mini-Circuits' website at www.minicircuits.com/MCLStore/terms.jsp.

REV. A
M98898
IZY2PD-64
HY/TD/CP/AM
090824