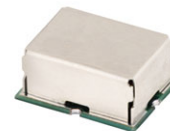


High IP3

Frequency Mixer

Level 17 (LO Power +17 dBm) 450 to 740 MHz

HJK-72H+



CASE STYLE: TTT881
PRICE: \$15.95 ea. QTY. (1-9)

+ RoHS compliant in accordance with EU Directive (2002/95/EC)

The +Suffix has been added in order to identify RoHS Compliance. See our web site for RoHS Compliance methodologies and qualifications.

Maximum Ratings

Operating Temperature	-40°C to 85°C
Storage Temperature	-55°C to 100°C
LO & RF Power	+19 dBm
Permanent damage may occur if any of these limits are exceeded.	

Pin Connections

LO	2
RF	1
IF	3
GROUND	4,5,6

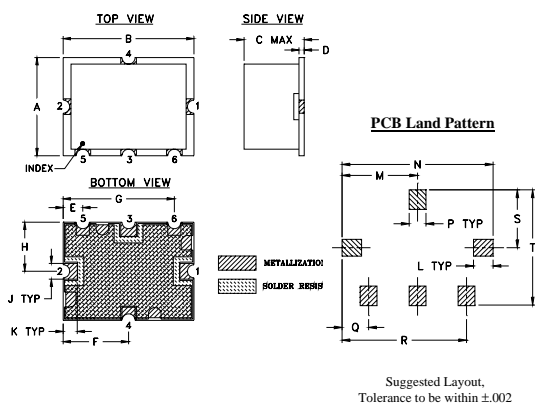
Features

- high IP3, 29 dBm typ.
- excellent L-R isolation, 44 dB typ.;
- L-I isolation, 40 dB typ.
- protected by US Patent 6,807,407

Applications

- base stations
- communication systems
- cellular
- mobile radio service
- paging
- wireless microphones

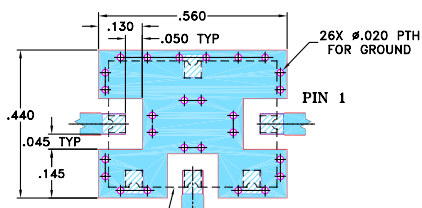
Outline Drawing



Outline Dimensions (inch)

A	B	C	D	E	F	G	H	J	K
.38	.50	.23	.020	.075	.250	.425	.187	.050	.050
9.65	12.70	5.84	0.51	1.91	6.35	10.80	4.75	1.27	1.27
L	M	N	P	Q	R	S	T	wt.	
.070	.270	.540	.060	.095	.445	.208	.415	grams	
1.78	6.86	13.72	1.52	2.41	11.30	5.28	10.54	0.8	

Demo Board MCL P/N: TB-12 Suggested PCB Layout (PL-079)



- NOTE: 1. TRACE WIDTH IS SHOWN FOR ROGERS RO4350B WITH DIELECTRIC THICKNESS .030" ± .002"; COPPER: 1/2 OZ. EACH SIDE. FOR OTHER MATERIALS TRACE WIDTH MAY NEED TO BE MODIFIED.
2. GROUND PAD SHALL BE FREE OF SOLDER MASK IF REQUIRED FOR SOLDERING.
3. BOTTOM SIDE OF THE PCB IS CONTINUOUS GROUND PLANE.
- DENOTES PCB COPPER LAYOUT WITH SMOBC (SOLDER MASK OVER BARE COPPER), SEE NOTE 2.
- DENOTES COPPER LAND PATTERN FREE OF SOLDER MASK

Electrical Specifications

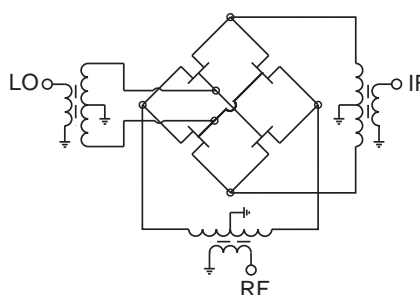
FREQUENCY (MHz)			CONVERSION LOSS* (dB)			RF in at 1dB Compr (dBm)	IP3 (dBm)	LO-RF ISOLATION (dB)		LO-IF ISOLATION (dB)	
RF	LO	IF	Typ.	σ	Max.	Typ.	Typ.	Typ.	Min.	Typ.	Min.
450-670	520-740	30-500	7.2	0.1	8.8	+17	29	44	32	40	30

*Conversion Loss at IF=70 MHz.

Typical Performance Data

Frequency		Conversion Loss (dB)	Isolation L-R	Isolation L-I	VSWR RF Port	VSWR LO Port	IP3 (dBm)
RF MHz	LO MHz	LO +17dBm	LO +17dBm	LO +17dBm	LO +17dBm	LO +17dBm	LO +17dBm
450.10	520.10	7.47	44.00	41.74	2.29	2.95	27.63
460.10	530.10	7.57	44.09	42.77	2.26	2.57	27.62
470.10	540.10	7.47	44.19	44.33	2.25	2.25	27.89
480.10	550.10	7.25	44.14	44.86	2.23	1.98	28.00
490.10	560.10	7.29	44.26	45.88	2.23	1.76	28.20
500.10	570.10	7.26	44.64	45.99	2.21	1.58	28.51
510.10	580.10	7.08	44.70	44.95	2.20	1.44	28.62
520.10	590.10	7.09	44.44	44.62	2.18	1.34	28.65
530.10	600.10	7.18	44.77	42.83	2.18	1.29	28.83
550.10	620.10	7.16	44.82	41.05	2.15	1.35	29.33
570.10	640.10	7.23	44.80	39.64	2.14	1.53	29.64
590.10	660.10	7.12	44.76	38.05	2.14	1.75	29.56
610.10	680.10	7.02	44.70	36.92	2.13	1.99	29.03
630.10	700.10	7.11	44.61	36.05	2.16	2.23	28.29
650.10	720.10	7.10	44.51	35.80	2.17	2.46	27.15
670.10	740.10	7.20	43.74	35.99	2.18	2.67	26.72

Electrical Schematic



Mini-Circuits®
ISO 9001 ISO 14001 AS 9100 CERTIFIED

P.O. Box 350166, Brooklyn, New York 11235-0003 (718) 934-4500 Fax (718) 332-4661 The Design Engineers Search Engine Provides ACTUAL Data Instantly at minicircuits.com

IF/RF MICROWAVE COMPONENTS

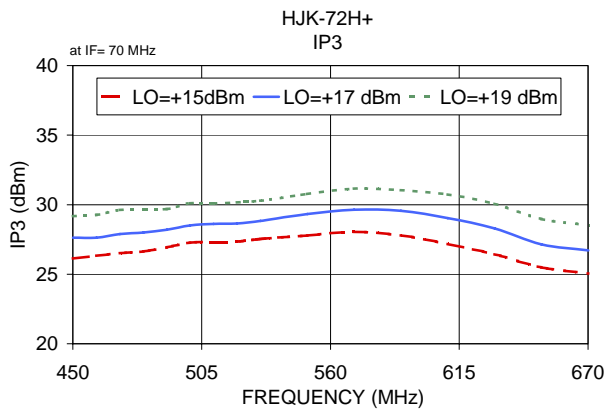
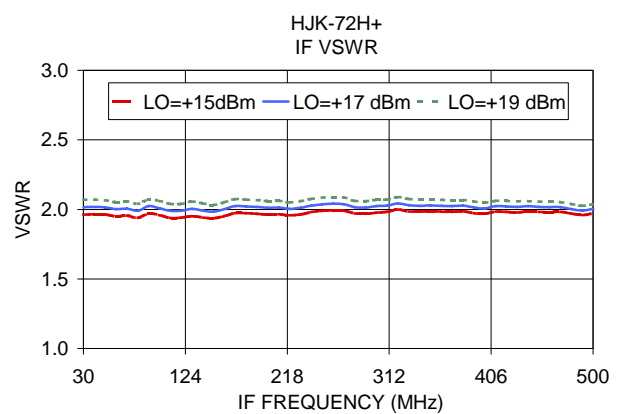
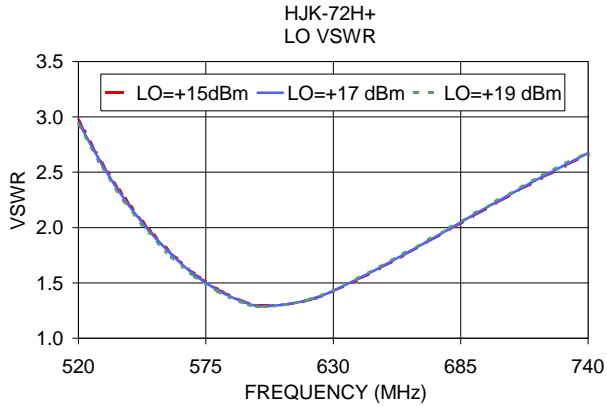
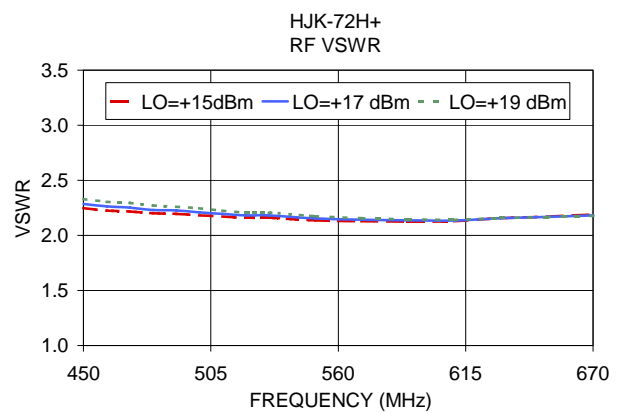
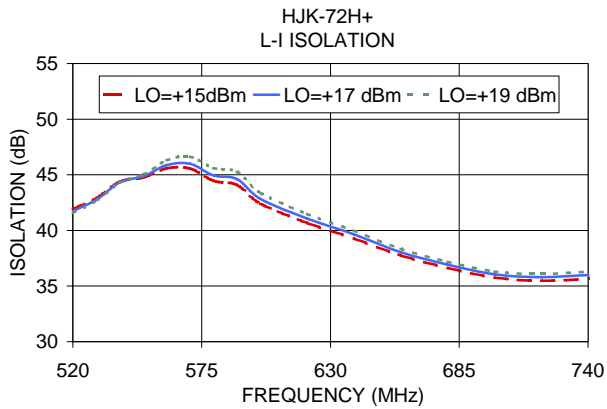
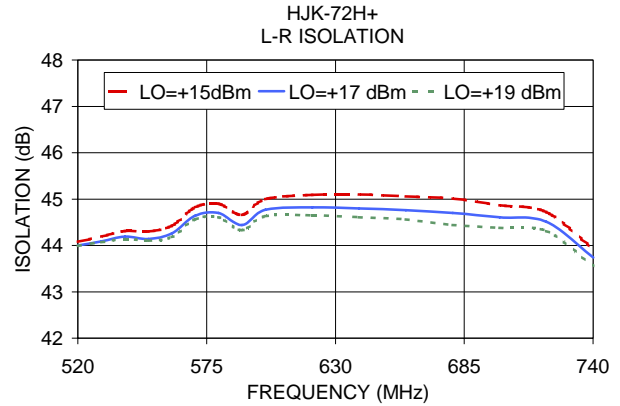
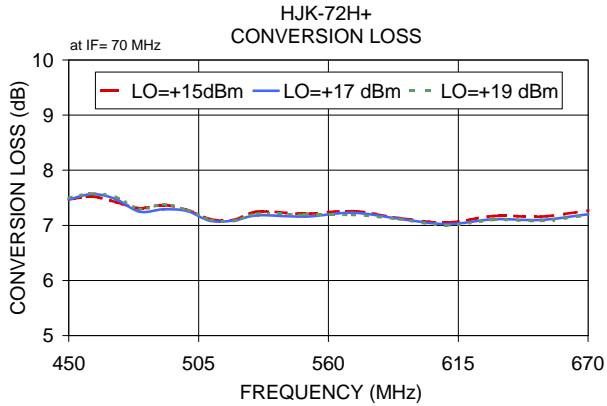
For detailed performance specs & shopping online see web site

Notes: 1. Performance and quality attributes and conditions not expressly stated in this specification sheet are intended to be excluded and do not form a part of this specification sheet. 2. Electrical specifications and performance data contained herein are based on Mini-Circuit's applicable established test performance criteria and measurement instructions. 3. The parts covered by this specification sheet are subject to Mini-Circuits standard limited warranty and terms and conditions (collectively, "Standard Terms"); Purchasers of this part are entitled to the rights and benefits contained therein. For a full statement of the Standard Terms and the exclusive rights and remedies thereunder, please visit Mini-Circuits' website at www.minicircuits.com/MCLStore/terms.jsp.

REV. OR
M112473
ED-11615A/1
HJK-72H+
WL/CP/AM
091105
Page 1 of 2

Performance Charts

HJK-72H+



For detailed performance specs & shopping online see web site

P.O. Box 350166, Brooklyn, New York 11235-0003 (718) 934-4500 Fax (718) 332-4661 The Design Engineers Search Engine Provides ACTUAL Data Instantly at minicircuits.com

IF/RF MICROWAVE COMPONENTS

Notes: 1. Performance and quality attributes and conditions not expressly stated in this specification sheet are intended to be excluded and do not form a part of this specification sheet. 2. Electrical specifications and performance data contained herein are based on Mini-Circuit's applicable established test performance criteria and measurement instructions. 3. The parts covered by this specification sheet are subject to Mini-Circuits standard limited warranty and terms and conditions (collectively, "Standard Terms"); Purchasers of this part are entitled to the rights and benefits contained therein. For a full statement of the Standard Terms and the exclusive rights and remedies thereunder, please visit Mini-Circuits' website at www.minicircuits.com/MCLStore/terms.jsp. Page 2 of 2