

High IP3 Frequency Mixer

Level 16 (LO Power +16 dBm) 140 to 180 MHz

HJK-3H+ HJK-3H



Maximum Ratings

Operating Temperature	-40°C to 85°C
Storage Temperature	-55°C to 100°C
LO & RF Power	19 dBm

Permanent damage may occur if any of these limits are exceeded.

Pin Connections

LO	2
RF	1
IF	3
GROUND	4,5,6

Features

- high IP3, 37 dBm typ.
- compression, 3 dB higher than LO power
- protected by US Patent 6,807,407

Applications

- base stations
- communication systems
- cellular
- PCS

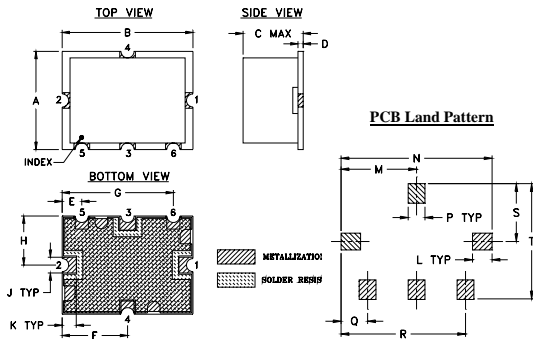
CASE STYLE: TTT881

PRICE: \$16.95 ea. QTY (1-9)

+ RoHS compliant in accordance with EU Directive (2002/95/EC)

The +Suffix identifies RoHS Compliance. See our web site for RoHS Compliance methodologies and qualifications.

Outline Drawing

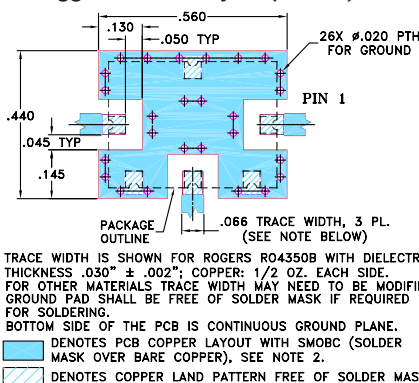


Suggested Layout, Tolerance to be within ±.002

Outline Dimensions (inch/mm)

A	B	C	D	E	F	G	H	J	K
.38	.50	.23	.020	.075	.250	.425	.187	.050	.050
9.65	12.70	5.84	0.51	1.91	6.35	10.80	4.75	1.27	1.27
L	M	N	P	Q	R	S	T		wt.
.070	.270	.540	.060	.095	.445	.208	.415		grams
1.78	6.86	13.72	1.52	2.41	11.30	5.28	10.54		0.8

Demo Board MCL P/N: TB-12 Suggested PCB Layout (PL-079)



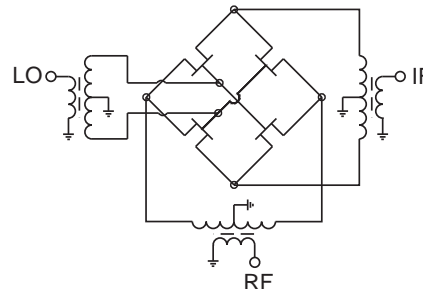
Electrical Specifications

FREQUENCY (MHz)			CONVERSION LOSS (dB)			RF in at 1dB Compr (dBm)	IP3 (dBm)	LO-RF ISOLATION (dB)		LO-IF ISOLATION (dB)	
RF	LO	IF	Typ.	σ	Max.	Typ.	Typ.	Typ.	Min.	Typ.	Min.
140-180	160	0.5-20	8.0	0.1	9.2	+19	37	44	35	44	30

Typical Performance Data

RF Freq. (RF1 for IP3) (MHz)	IF Freq. (MHz)	CONV. LOSS (dB)	RF-2 for IP3 (MHz)	IP3 (dBm)	LO/RF Freq. (MHz)	ISOLATION		VSWR (-1)		IF Freq. FOR VSWR (MHz)	VSWR (-1) IF PORT
						L-R (dB)	L-I (dB)	RF PORT (LO=160 MHz)	LO PORT		
139.9	20.1	8.14	140.9	34.1	140	50.78	52.78	1.27	15.53	0.3	1.10
144.9	15.1	8.16	145.9	34.1	145	50.70	48.36	1.27	9.33	0.4	1.09
149.9	10.1	8.17	150.9	34.3	150	51.06	44.92	1.28	6.13	0.5	1.10
154.9	5.1	8.17	155.9	34.2	155	52.09	42.08	1.27	4.16	0.8	1.13
156.9	3.1	8.17	157.9	34.5	160	54.10	39.91	1.28	3.20	1.1	1.14
157.9	2.1	8.19	158.0	34.4	165	55.81	38.41	1.27	3.09	3.1	1.16
158.9	1.1	8.21	159.0	34.7	170	54.88	37.59	1.27	3.62	5.1	1.15
159.5	0.5	8.24	159.6	34.2	175	52.76	37.23	1.28	4.57	8.1	1.15
160.5	0.5	8.26	160.6	34.6	180	51.28	37.20	1.28	5.74	10.1	1.15
161.1	1.1	8.22	161.2	34.6						15.1	1.16
162.1	2.1	8.19	162.2	34.3						20.1	1.16
163.1	3.1	8.19	164.1	34.0							
165.1	5.1	8.18	166.1	34.2							
170.1	10.1	8.19	171.1	34.2							
175.1	15.1	8.23	176.1	34.1							
180.1	20.1	8.25	181.1	34.4							

Electrical Schematic



Mini-Circuits®
ISO 9001 ISO 14001 AS 9100 CERTIFIED

For detailed performance specs & shipping online see web site

P.O. Box 350166, Brooklyn, New York 11235-0003 (718) 934-4500 Fax (718) 332-4661 The Design Engineers Search Engine Provides ACTUAL Data Instantly at minicircuits.com

IF/RF MICROWAVE COMPONENTS

Notes: 1. Performance and quality attributes and conditions not expressly stated in this specification sheet are intended to be excluded and do not form a part of this specification sheet. 2. Electrical specifications and performance data contained herein are based on Mini-Circuit's applicable established test performance criteria and measurement instructions. 3. The parts covered by this specification sheet are subject to Mini-Circuits standard limited warranty and terms and conditions (collectively, "Standard Terms"); Purchasers of this part are entitled to the rights and benefits contained therein. For a full statement of the Standard Terms and the exclusive rights and remedies thereunder, please visit Mini-Circuits' website at www.minicircuits.com/MCLStore/terms.jsp.

REV. F
M112207
EDR-5182/1
RVN/TD/AM
091105
Page 1 of 2

