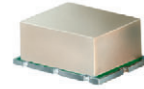


Surface Mount Frequency Mixer

HJK-20VH+ HJK-20VH

Level 20 (LO Power +20 dBm) 1090 to 1950 MHz



Maximum Ratings

Operating Temperature	-40°C to 85°C
Storage Temperature	-55°C to 100°C
LO Power	+22 dBm
Permanent damage may occur if any of these limits are exceeded.	

Pin Connections

LO	2
RF	1
IF	3
GROUND	4,5,6

Features

- high IP3, up to 30 dBm typ.
- low spurious
- 2RF-LO, -73 dBc typ.
- 2LO-2RF, -73 dBc typ.

Applications

- for cable tv up converter (second mixer)
- communication systems

CASE STYLE: TTT167
PRICE: \$24.95 ea. QTY (1-9)

+ RoHS compliant in accordance with EU Directive (2002/95/EC)

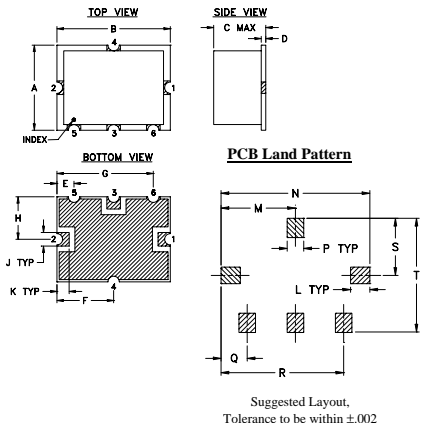
The +Suffix identifies RoHS Compliance. See our web site for RoHS Compliance methodologies and qualifications.

Electrical Specifications (T_{AMB}=25°C)

FREQUENCY (MHz)			CONVERSION LOSS (dB)			SECOND ORDER I.M. (Note 1) (dBc) Max.		RF in at 1dB Compr (dBm)	IP3 (dBm)	LO-RF ISOLATION (dB)		LO-IF ISOLATION (dB)	
RF	LO	IF	\bar{X}	σ	Max.	2RF-LO	2LO-2RF	Typ.	Typ.	Typ.	Min.	Typ.	Min.
1090	1167-1950	77-870	7.2	0.2	8.5	-65	-63	15	30	32	26	34	26
1090	1183-1590	93-500	7.16	0.18	8.2	-73	-73	15	29	34	26	35	28
1090	1590-1800	500-710	7.24	0.10	8.5	-73	-70	15	27	34	26	38	26
1090	1800-1900	710-810	7.37	0.11	8.5	-68	-65	15	27	35	28	38	28
1090	1900-1950	810-860	7.37	0.13	8.5	-65	-63	15	27	37	28	35	28

Note 1. Measured at -14 dBm RF. High order spurious 3RF-2LO, 4RF-2LO, 4RF-3LO, 3RF-2LO, 3RF-2LO (dBc) typ. < -80 dBc

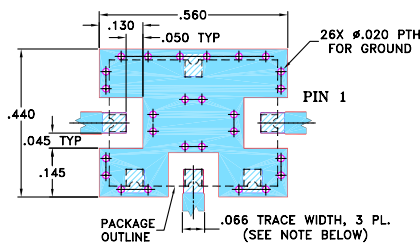
Outline Drawing



Outline Dimensions (inch/mm)

A	B	C	D	E	F	G	H	J	K
.38	.50	.23	.020	.075	.250	.425	.187	.050	.050
9.65	12.70	5.84	0.51	1.91	6.35	10.80	4.75	1.27	1.27
L	M	N	P	Q	R	S	T	wt.	
.070	.270	.540	.060	.095	.445	.208	.415	grams	
1.78	6.86	13.72	1.52	2.41	11.30	5.28	10.54	0.8	

Demo Board MCL P/N: TB-12 Suggested PCB Layout (PL-079)

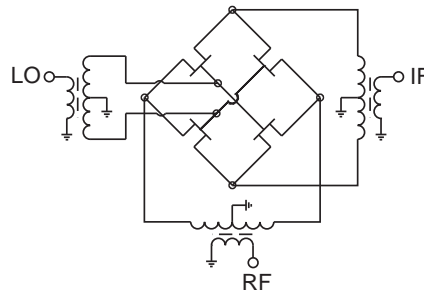


- NOTE: 1. TRACE WIDTH IS SHOWN FOR ROGERS RO4350B WITH DIELECTRIC THICKNESS .030" ± .002". COPPER: 1/2 OZ. EACH SIDE. FOR OTHER MATERIALS TRACE WIDTH MAY NEED TO BE MODIFIED.
2. GROUND PAD SHALL BE FREE OF SOLDER MASK IF REQUIRED FOR SOLDERING.
3. BOTTOM SIDE OF THE PCB IS CONTINUOUS GROUND PLANE.
DENOTES PCB COPPER LAYOUT WITH SMOBC (SOLDER MASK OVER BARE COPPER), SEE NOTE 2.
DENOTES COPPER LAND PATTERN FREE OF SOLDER MASK

Typical Performance Data

Frequency (MHz)	Conversion Loss (dB)	Isolation L-R (dB)	Isolation L-I (dB)	VSWR RF Port (:1)	VSWR LO Port (:1)	2RF-LO (dBc)	2LO-2RF (dBc)	IP3 (dBm)	
RF	LO	LO +20dBm	LO +20dBm	LO +20dBm	LO +20dBm	LO +20dBm	LO +20dBm	LO +20dBm	
1090	1167	7.2	38	32	2.0	9.5	-77	-79	32
1090	1183	7.2	39	33	2.0	6.4	-79	-81	34
1090	1590	7.6	32	42	1.8	2.8	-79	-79	29
1090	1800	7.5	32	39	1.9	3.9	-83	-78	28
1090	1900	7.5	33	33	1.8	4.6	-79	-74	28
1090	1950	7.4	34	32	1.8	3.8	-71	-68	27

Electrical Schematic



Mini-Circuits
ISO 9001 ISO 14001 AS 9100 CERTIFIED

For detailed performance specs & shopping online see web site

P.O. Box 350166, Brooklyn, New York 11235-0003 (718) 934-4500 Fax (718) 332-4661 The Design Engineers Search Engine Provides ACTUAL Data Instantly at minicircuits.com

Notes: 1. Performance and quality attributes and conditions not expressly stated in this specification sheet are intended to be excluded and do not form a part of this specification sheet. 2. Electrical specifications and performance data contained herein are based on Mini-Circuits' applicable established test performance criteria and measurement instructions. 3. The parts covered by this specification sheet are subject to Mini-Circuits standard limited warranty and terms and conditions (collectively, "Standard Terms"); Purchasers of this part are entitled to the rights and benefits contained therein. For a full statement of the Standard Terms and the exclusive rights and remedies thereunder, please visit Mini-Circuits' website at www.minicircuits.com/MCLStore/terms.jsp.

REV. B
M112207
ED-11277/1
HJK-20VH
VV/RS/AM
091105
Page 1 of 2

