

# Coaxial RF Transformer

50Ω 0.01 to 125 MHz

**FTB-1-6+**  
**FTB-1-6**



## Maximum Ratings

Operating Temperature	-55°C to 100°C
Storage Temperature	-55°C to 100°C
RF Power	250mW
DC Current	30mA

Permanent damage may occur if any of these limits are exceeded.

## Coaxial Connections

	Marking
PRIMARY	BAL
SECONDARY	UNBAL

## Features

- balanced to single-ended
- balanced port: isolated Female BNC

## Applications

- DC Block

CASE STYLE: H16-1

BNC Connectors	Model	Price	Qty.
FEMALE/FEMALE	FTB-1-6*A15(+)	\$46.95	(1-9)
MALE/FEMALE	FTB-1-6*C15(+)	\$46.95	(1-9)
BRACKET (OPTION "B")		\$2.50	(1+)

**+ RoHS compliant in accordance with EU Directive (2002/95/EC)**

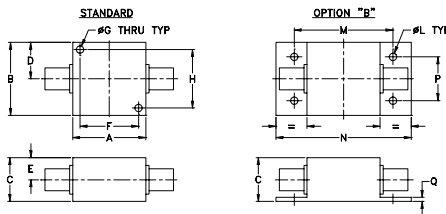
The +Suffix identifies RoHS Compliance. See our web site for RoHS Compliance methodologies and qualifications.

## Transformer Electrical Specifications

Ω RATIO	FREQUENCY (MHz)	INSERTION LOSS*		
		3 dB MHz	2 dB MHz	1 dB MHz
1	0.01-125	0.01-125	0.05-50	0.1-25

\* Insertion Loss is referenced to mid-band loss, 0.2 dB typ.

## Outline Drawing



## Outline Dimensions (inch/mm)

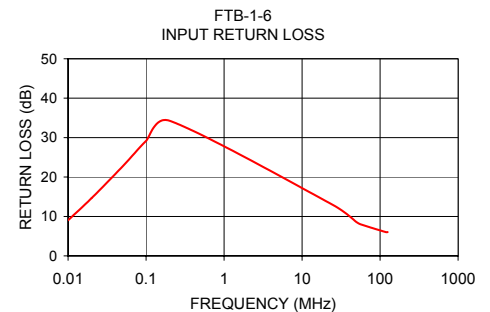
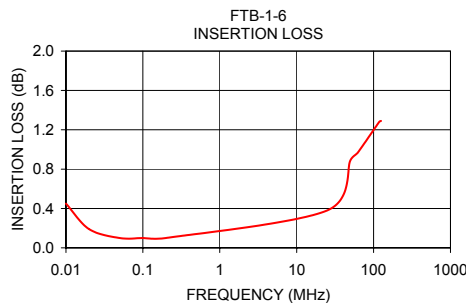
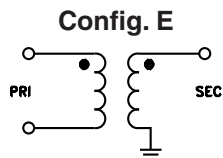
A	B	C	D	E	F	G	H
1.25	1.25	.81	.63	.41	1.000	.125	1.000
31.75	31.75	20.57	16.00	10.41	25.40	3.18	25.40

J	K	L	M	N	P	Q	wt
--	--	.125	1.688	2.19	.750	.06	grams
--	--	3.18	42.88	55.63	19.05	1.52	70.0

## Typical Performance Data

FREQUENCY (MHz)	INSERTION LOSS (dB)	INPUT R. LOSS (dB)
0.01	0.45	9.03
0.02	0.19	14.65
0.05	0.10	22.68
0.10	0.10	29.17
0.20	0.10	34.28
25.00	0.38	12.89
50.00	0.89	8.56
62.67	0.97	7.71
118.44	1.28	6.04
125.00	1.29	6.02



**Mini-Circuits**  
ISO 9001 ISO 14001 AS 9100 CERTIFIED

P.O. Box 350166, Brooklyn, New York 11235-0003 (718) 934-4500 Fax (718) 332-4661 The Design Engineers Search Engine Provides ACTUAL Data Instantly at [minicircuits.com](http://minicircuits.com)

IF/RF MICROWAVE COMPONENTS

For detailed performance specs & shopping online see web site

Notes: 1. Performance and quality attributes and conditions not expressly stated in this specification sheet are intended to be excluded and do not form a part of this specification sheet. 2. Electrical specifications and performance data contained herein are based on Mini-Circuit's applicable established test performance criteria and measurement instructions. 3. The parts covered by this specification sheet are subject to Mini-Circuits standard limited warranty and terms and conditions (collectively, "Standard Terms"); Purchasers of this part are entitled to the rights and benefits contained therein. For a full statement of the Standard Terms and the exclusive rights and remedies thereunder, please visit Mini-Circuits' website at [www.minicircuits.com/MCLStore/terms.jsp](http://www.minicircuits.com/MCLStore/terms.jsp).

REV. C  
M124908  
FTB-1-6  
IG/CP/AM  
091022