

Surface Mount Bandpass Filter

CBP-1280F+

50Ω 1160 to 1400 MHz

The Big Deal

- High Q
- Good selectivity
- Low VSWR
- Small shielded package



CASE STYLE: KV1710

Product Overview

CBP-1280F+ is a coaxial-ceramic-resonator based bandpass filter in a shielded package fabricated using SMT technology. This filter has low insertion loss with high rejection and low VSWR for use in L-band application, Aviation / Aeronautical, defence systems and radio astronomy.

Key Features

Feature	Advantages
High Q	The CBP-1280F+ filter incorporates High-Q ceramic resonators that enables low insertion loss.
Good selectivity	This filter designed with six pole. So this providing good selectivity in the stopband performance.
Low VSWR	This filter maintains typical VSWR over a passband frequency range.
Rugged construction	The CBP-1280F+ has been qualified over wide range of thermal, mechanical and environmental conditions including withstanding the stress of extensive solder reflow cycles.

Notes

- A. Performance and quality attributes and conditions not expressly stated in this specification document are intended to be excluded and do not form a part of this specification document.
B. Electrical specifications and performance data contained in this specification document are based on Mini-Circuit's applicable established test performance criteria and measurement instructions.
C. The parts covered by this specification document are subject to Mini-Circuits standard limited warranty and terms and conditions (collectively, "Standard Terms"); Purchasers of this part are entitled to the rights and benefits contained therein. For a full statement of the Standard Terms and the exclusive rights and remedies thereunder, please visit Mini-Circuits' website at www.minicircuits.com/MCLStore/terms.jsp



Surface Mount Bandpass Filter

CBP-1280F+

50Ω 1160 to 1400 MHz



CASE STYLE: KV1710

Features

- High Q
- Good selectivity
- Low VSWR
- Small shielded package

Applications

- L-band application
- Aviation/Aeronautical
- Defence systems
- Radio astronomy

Electrical Specifications at 25°C

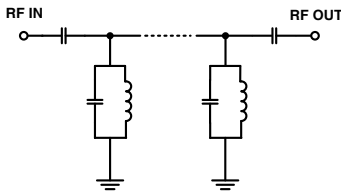
Parameter	F#	Frequency (MHz)	Min.	Typ.	Max.	Unit	
Pass Band	Center Frequency	-	-	1280	-	MHz	
	Insertion Loss	F1-F2	1160-1400	-	1.0	2.0	dB
	VSWR	F1-F2	1160-1400	-	1.5	1.9	:1
Stop Band, Lower	Insertion Loss	DC-F3	DC-1000	20	30	-	dB
	VSWR	DC-F3	DC-1000	-	20	-	:1
Stop Band, Upper	Insertion Loss	F4-F5	1570-2100	20	30	-	dB
	VSWR	F4-F5	1570-2100	-	20	-	:1

Maximum Ratings

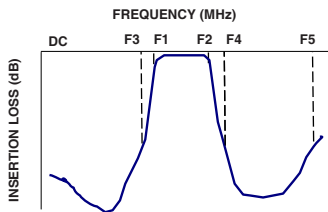
Operating Temperature	-40°C to 85°C
Storage Temperature	-55°C to 100°C
RF Power Input	1 W max.

Permanent damage may occur if any of these limits are exceeded.

Functional Schematic



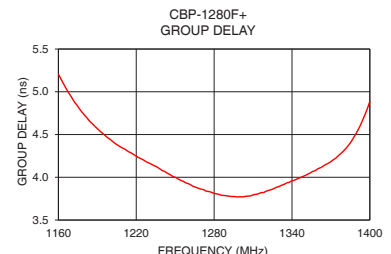
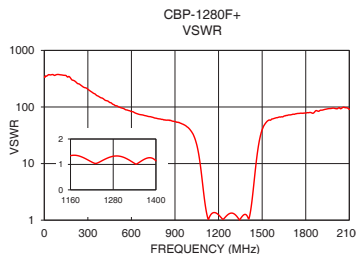
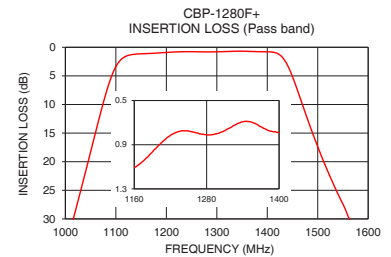
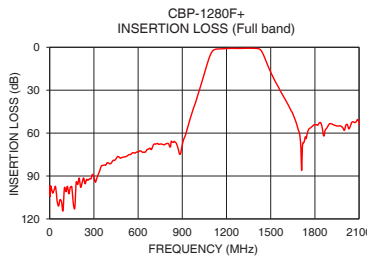
Typical Frequency Response



Typical Performance Data at 25°C

Frequency (MHz)	Insertion Loss (dB)	VSWR (:1)	Frequency (MHz)	Group Delay (nsec)
1	96.75	340.69	1160	5.21
100	98.16	374.91	1170	4.94
500	76.83	104.83	1180	4.73
1000	35.23	40.81	1190	4.57
1015	30.23	36.27	1200	4.44
1045	20.00	23.79	1210	4.34
1055	16.53	18.82	1220	4.25
1080	8.16	7.28	1230	4.17
1100	3.39	2.66	1240	4.08
1160	1.11	1.34	1250	4.00
1280	0.81	1.32	1260	3.93
1400	0.79	1.14	1270	3.86
1440	3.12	3.72	1280	3.81
1480	12.62	24.83	1290	3.78
1510	19.60	45.76	1300	3.77
1560	29.53	58.87	1320	3.84
1570	31.31	61.35	1340	3.96
1500	17.38	39.61	1360	4.10
2000	58.12	94.37	1380	4.31
2100	52.14	90.80	1400	4.89

+RoHS Compliant
The +Suffix identifies RoHS Compliance. See our web site for RoHS Compliance methodologies and qualifications



Notes

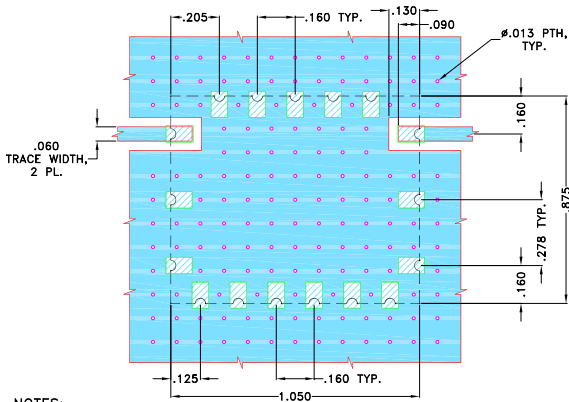
- Performance and quality attributes and conditions not expressly stated in this specification document are intended to be excluded and do not form a part of this specification document.
- Electrical specifications and performance data contained in this specification document are based on Mini-Circuit's applicable established test performance criteria and measurement instructions.
- The parts covered by this specification document are subject to Mini-Circuits standard limited warranty and terms and conditions (collectively, "Standard Terms"); Purchasers of this part are entitled to the rights and benefits contained therein. For a full statement of the Standard Terms and the exclusive rights and remedies thereunder, please visit Mini-Circuits' website at www.minicircuits.com/MCLStore/terms.jsp



Pad Connections

INPUT	1
OUTPUT	12
GROUND	2,3,4,5,6,7,8,9,10,11,13,14,15,16,17

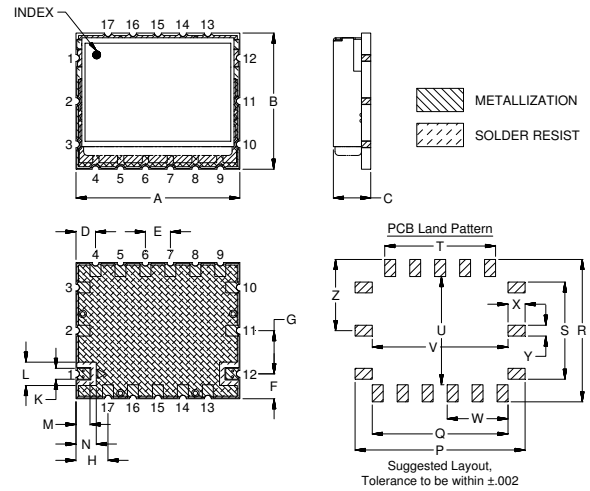
Demo Board MCL P/N: TB-693+
Suggested PCB Layout (PL-378)



- NOTES:
- TRACE WIDTH IS SHOWN FOR OAK (OAK-602) WITH DIELECTRIC THICKNESS .022"±.0015". COPPER: 1/2 OZ. EACH SIDE. FOR OTHER MATERIALS TRACE WIDTH MAY NEED TO BE MODIFIED.
 - BOTTOM SIDE OF THE PCB IS CONTINUOUS GROUND PLANE.

- DENOTES PCB COPPER LAYOUT WITH SMOBC (SOLDER MASK OVER BARE COPPER)
- DENOTES COPPER LAND PATTERN FREE OF SOLDERMASK

Outline Drawing



Outline Dimensions (inch / mm)

A	B	C	D	E	F	G	H	J	K	L	M	N
1.050	.875	.239	.125	.160	.160	.278	.205	.160	.070	.150	.090	.130
26.67	22.23	6.07	3.18	4.06	4.06	7.06	5.21	4.06	1.78	3.81	2.29	3.30
P	Q	R	S	T	U	V	W	X	Y	Z	Wt.	
1.090	.870	.915	.625	.710	.695	.870	.390	.110	.070	.458	grams	
27.69	22.10	23.24	15.88	18.03	17.65	22.10	9.91	2.79	1.78	11.63	8.5	

Notes

- Performance and quality attributes and conditions not expressly stated in this specification document are intended to be excluded and do not form a part of this specification document.
- Electrical specifications and performance data contained in this specification document are based on Mini-Circuit's applicable established test performance criteria and measurement instructions.
- The parts covered by this specification document are subject to Mini-Circuit's standard limited warranty and terms and conditions (collectively, "Standard Terms"); Purchasers of this part are entitled to the rights and benefits contained therein. For a full statement of the Standard Terms and the exclusive rights and remedies thereunder, please visit Mini-Circuit's website at www.minicircuits.com/MCLStore/terms.jsp

