

Bandpass Filter

BPF-B177+

50Ω 170 to 185 MHz

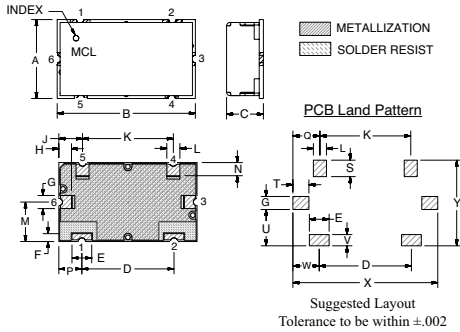
Maximum Ratings

Operating Temperature	-40°C to 85°C
Storage Temperature	-55°C to 100°C
RF Power Input	0.5W Max.

Pin Connections

INPUT	1
OUTPUT	2
GROUND	3, 4, 5, 6

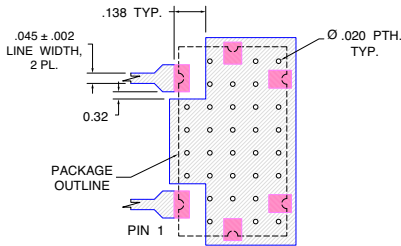
Outline Drawing



Outline Dimensions (inch/mm)

A	B	C	D	E	F	G	H	J	K	L	M
.472	.826	.220	.551	.118	.047	.078	.076	.142	.543	.078	.236
11.99	20.98	5.59	14.00	3.00	1.19	1.98	1.92	3.59	13.79	1.98	5.99
N	P	Q	S	T	U	V	W	X	Y	wt	
.079	.138	.162	.098	.096	.217	.067	.157	.866	.512	grams	
1.99	3.49	4.11	2.49	2.44	5.51	1.70	3.99	22.00	13.00	6	

Demo Board MCL P/N: TB-400+ Suggested PCB Layout (PL-247)



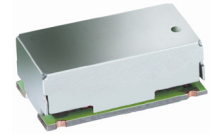
- NOTES:
- TRACE WIDTH IS SHOWN FOR FR4 WITH DIELECTRIC THICKNESS. .025"±.002", COPPER: 1/2 OZ. EACH SIDE. FOR OTHER MATERIALS TRACE WIDTH MAY NEED TO BE MODIFIED.
 - BOTTOM SIDE OF THE PCB IS CONTINUOUS GROUND PLANE.
- DENOTES PCB COPPER LAYOUT WITH SMOBC (SOLDER MASK OVER BARE COPPER)
 - DENOTES COPPER LAND PATTERN FREE OF SOLDER MASK

Features

- Excellent rejection
- Good VSWR, 1.3:1 typ. @ Passband

Applications

- Receivers / Transmitters
- Base station (CDMA 2000)



CASE STYLE: HZ1198
PRICE: \$15.95 QTY (1-9)

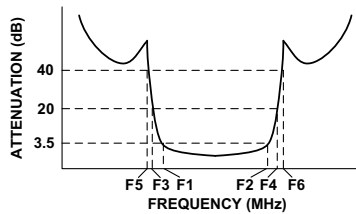
+ RoHS compliant in accordance with EU Directive (2002/95/EC)

The +Suffix has been added in order to identify RoHS Compliance. See our web site for RoHS Compliance methodologies and qualifications.

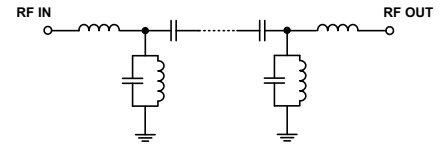
Bandpass Filter Electrical Specifications (T_{AMB} = 25°C)

CENTER FREQ. (MHz)	PASSBAND (MHz) (Loss < 3.5dB) F1 - F2	STOPBANDS (MHz)				VSWR (:1)	
		Loss > 20dB		Loss > 40dB		Passband Max.	Stopband Typ.
		F3	F4	F5	F6		
177	170 - 185	150	210	135	240 - 2000	1.7	30

Typical Frequency Response

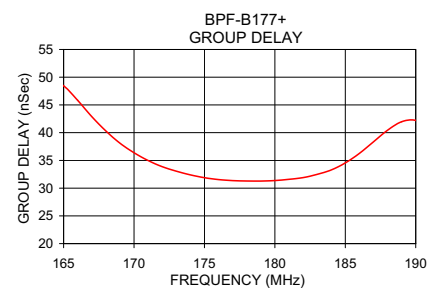
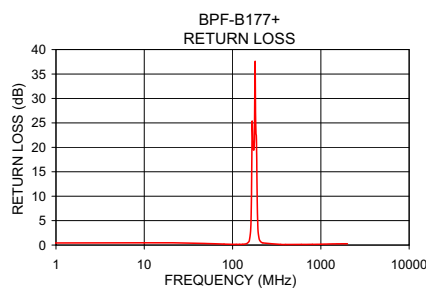
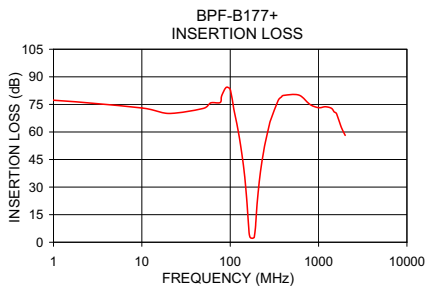


Functional Schematic



Typical Performance Data at 25°C

Frequency (MHz)	Insertion Loss (dB)		Return Loss (dB)	Frequency (MHz)	Group Delay (nsec)
	\bar{x}	σ			
1.0	77.26	3.26	0.41	165.0	48.45
135.0	48.61	0.42	0.18	167.0	42.89
150.0	29.67	0.56	0.49	169.0	38.11
159.0	13.44	0.72	2.20	170.0	36.38
163.0	6.08	0.50	7.72	171.0	34.99
170.0	2.42	0.04	20.55	172.0	33.87
177.0	2.17	0.01	21.80	173.0	33.06
185.0	2.46	0.05	22.54	174.0	32.39
191.0	5.06	0.57	7.07	175.0	31.89
194.0	9.27	0.91	3.23	176.0	31.55
199.0	17.13	0.89	1.44	177.0	31.35
210.0	30.18	0.62	0.66	179.0	31.28
240.0	50.00	0.42	0.29	181.0	31.59
400.0	79.86	2.19	0.12	183.0	32.48
900.0	74.08	1.98	0.16	185.0	34.54
1200.0	73.73	1.09	0.21	187.0	38.35
1600.0	69.91	0.85	0.25	188.0	40.44
2000.0	58.16	0.52	0.27	190.0	42.22



P.O. Box 350166, Brooklyn, New York 11235-0003 (718) 934-4500 Fax (718) 332-4661 For detailed performance specs & shopping online see Mini-Circuits web site



The Design Engineers Search Engine Provides ACTUAL Data Instantly From MINI-CIRCUITS At: www.minicircuits.com

RF/IF MICROWAVE COMPONENTS

REV. OR
M110471
EDR-8063/1BUF1
BPF-B177+
URJ/RAV
080113
Page 1 of 1