

Bandpass Filter

BPF-A580+

50Ω 520 to 640 MHz

Maximum Ratings

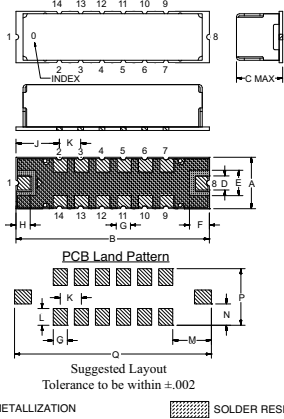
Operating Temperature	-40°C to 85°C
Storage Temperature	-55°C to 100°C
RF Power Input	0.5*W at 25°C

*Passband rating, derate linearly to 0.25W at 100°C ambient.

Pin Connections

RF IN	1
RF OUT	8
GROUND	2,3,4,5,6,7,9,10,11,12,13,14

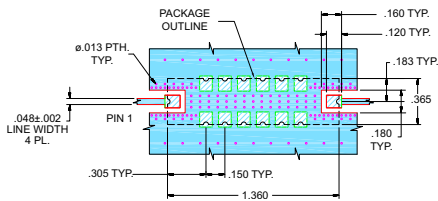
Outline Drawing



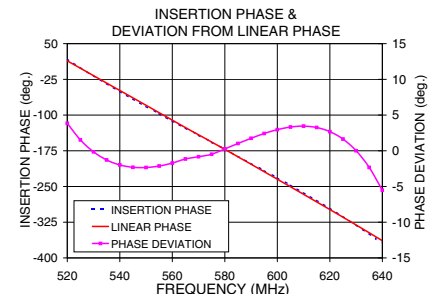
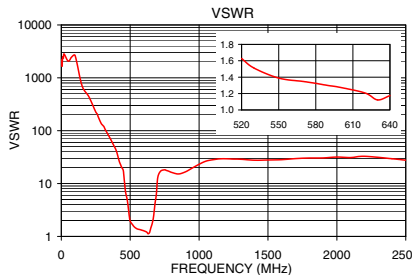
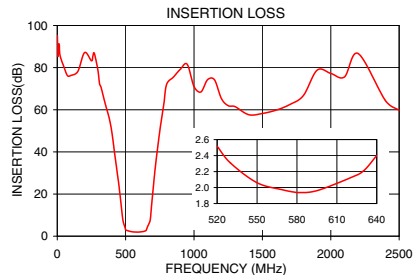
Outline Dimensions (inch/mm)

A	B	C	D	E	F	G	H
.365	1.360	.35	.100	.180	.140	.100	.100
9.27	34.54	8.89	2.54	4.57	3.58	2.54	2.54
J	K	L	M	N	P	Q	wt.
.305	.150	.120	.275	.152	.405	1.400	grams
7.75	3.81	3.05	6.99	3.87	10.29	35.65	4.0

Demo Board MCL P/N: TB-363+ Suggested PCB Layout (PL-227)



- NOTES:
- TRACE WIDTH IS SHOWN FOR FR4 WITH DIELECTRIC THICKNESS: .025 ± .002. COPPER: 1/2 OZ. EACH SIDE. FOR OTHER MATERIALS TRACE WIDTH MAY NEED TO BE MODIFIED.
 - BOTTOM SIDE OF THE PCB IS CONTINUOUS GROUND PLANE.
 - DENOTES PCB COPPER LAYOUT WITH SMOBC (SOLDER MASK OVER BARE COPPER)
 - DENOTES COPPER LAND PATTERN FREE OF SOLDER MASK



Features

- Linear Phase, up to ±6 deg Typ @ Fc ± 60 MHz
- High Rejection
- Shielded case
- Aqueous washable

Applications

- Military Radio
- Harmonic Rejection
- Transmitters / Receivers



CASE STYLE: HQ1157
PRICE: \$29.95 ea. QTY (1-9)

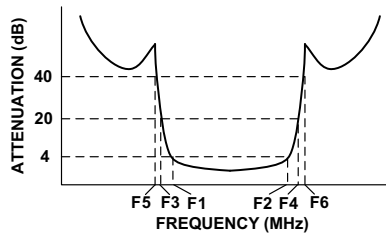
+ RoHS compliant in accordance with EU Directive (2002/95/EC)

The +Suffix has been added in order to identify RoHS Compliance. See our web site for RoHS Compliance methodologies and qualifications.

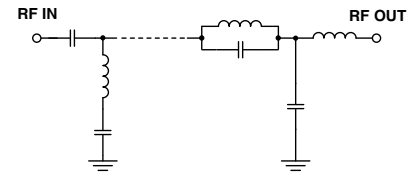
Bandpass Filter Electrical Specifications (T_{AMB} = 25°C)

CENTER FREQ. (MHz)	PASSBAND (MHz) (Loss < 4dB)	STOPBANDS (MHz)				MAXIMUM DEVIATION FROM LINEAR PHASE (deg.)	VSWR (:1)		
		Loss > 20dB		Loss > 40dB			Passband		Stopband
Fc	F1 - F2	F3	F4	F5	F6	Fc ± 60MHz	Typ.	Max.	Typ.
580	520 - 640	440	720	380	760-2500	±11	1.4	1.9	20

Typical Frequency Response



Functional Schematic



Typical Performance Data at 25°C

Frequency (MHz)	Insertion Loss (dB)	VSWR (:1)	Frequency (MHz)	Deviation from Linear Phase (deg.)
0.5	95.26	1980.07	520	3.84
100	76.30	2647.93	525	1.52
380	56.02	53.15	530	-0.14
440	29.37	19.85	540	-1.98
465	16.02	7.35	550	-2.34
480	7.55	4.68	560	-1.72
495	4.19	2.23	570	-0.83
520	2.52	1.63	575	-0.48
550	2.06	1.39	580	0.26
580	1.94	1.32	585	1.02
600	1.99	1.27	590	1.75
640	2.40	1.18	595	2.42
670	5.93	2.39	600	2.96
690	14.73	6.25	610	3.45
720	34.40	17.09	620	2.68
760	54.52	17.82	630	0.01
1000	71.03	23.12	635	-2.33
2500	59.76	27.65	640	-5.52



P.O. Box 350166, Brooklyn, New York 11235-0003 (718) 934-4500 Fax (718) 332-4661 For detailed performance specs & shopping online see Mini-Circuits web site



The Design Engineers Search Engine Provides ACTUAL Data Instantly From MINI-CIRCUITS At: www.minicircuits.com

RF/IF MICROWAVE COMPONENTS



REV. OR
M117937
EDR-8843AUF1
BPF-A580+
URJ/RAV
080603
Page 1 of 1