

Bandpass Filter

BPF-A490+

50Ω 400 to 600 MHz

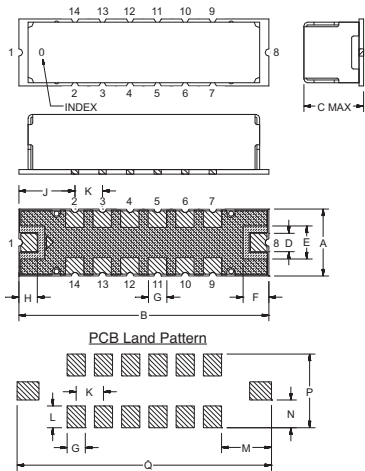
Maximum Ratings

Operating Temperature	-40°C to 85°C
Storage Temperature	-55°C to 100°C
RF Power Input	0.5W at 25°C

Pin Connections

RF IN	1
RF OUT	8
GROUND	2,3,4,5,6,7,9,10,11,12,13,14

Outline Drawing



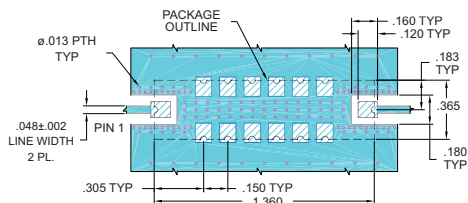
Suggested Layout
Tolerance to be within ±.002

METALLIZATION
SOLDER RESIST

Outline Dimensions (inch/mm)

A	B	C	D	E	F	G	H
.365	1.360	.35	.100	.180	.140	.100	.100
9.27	34.54	8.89	2.54	4.57	3.58	2.54	2.54
J	K	L	M	N	P	Q	wt.
.305	.150	.120	.275	.152	.405	1.400	grams
7.75	3.81	3.05	6.99	3.87	10.29	35.65	4.0

Demo Board MCL P/N: TB-363+
Suggested PCB Layout (PL-227)



NOTES:

- TRACE WIDTH IS SHOWN FOR FR4 WITH DIELECTRIC THICKNESS: .025" ± .002". COPPER: 1/2 OZ. EACH SIDE. FOR OTHER MATERIALS TRACE WIDTH MAY NEED TO BE MODIFIED.
 - BOTTOM SIDE OF THE PCB IS CONTINUOUS GROUND PLANE.
- DENOTES PCB COPPER LAYOUT WITH SMOBC (SOLDER MASK OVER BARE COPPER)
■ DENOTES COPPER LAND PATTERN FREE OF SOLDER MASK

Features

- Good VSWR, 1.5:1 Typ @ Passband
- High Rejection
- Shielded case
- Aqueous washable

Applications

- Industrial Microwave and RF
- Harmonic Rejection
- Transmitters / Receivers



CASE STYLE: HQ1157
PRICE: \$29.95 ea. QTY (1-9)

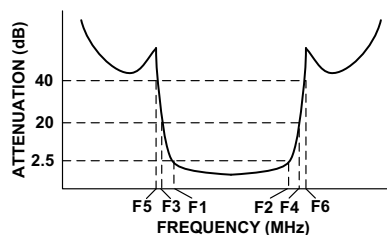
+ RoHS compliant in accordance with EU Directive (2002/95/EC)

The +Suffix has been added in order to identify RoHS Compliance. See our web site for RoHS Compliance methodologies and qualifications.

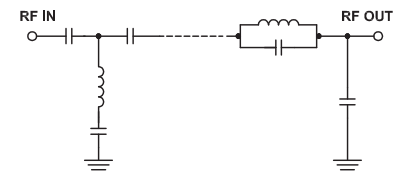
Bandpass Filter Electrical Specifications (T_{AMB} = 25°C)

CENTER FREQ. (MHz)	PASSBAND (MHz) (Loss < 2.5dB)	STOPBANDS (MHz)				VSWR (:1)		
		Loss > 20dB		Loss > 40dB		Passband		Stopband
F _c	F ₁ - F ₂	F ₃	F ₄	F ₅	F ₆	Typ.	Max.	Typ.
490	400 - 600	280	680	250	710 - 2000	1.5	2.0	20

Typical Frequency Response

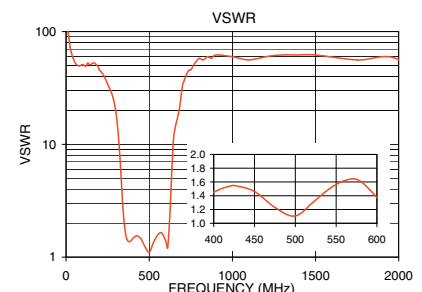
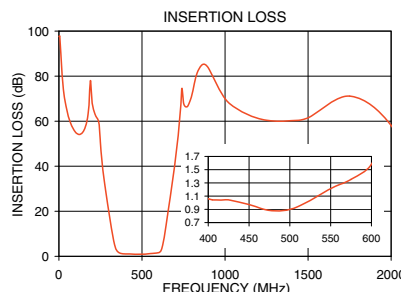


Functional Schematic



Typical Performance Data at 25°C

Frequency (MHz)	Insertion Loss (dB)	VSWR (:1)
0.5	97.60	157.93
250	50.45	34.07
280	29.80	26.74
305	17.53	16.89
325	8.65	7.14
335	5.20	3.98
350	2.39	1.94
400	1.06	1.45
450	0.97	1.46
490	0.89	1.14
550	1.21	1.56
600	1.58	1.37
620	3.55	1.80
630	6.82	3.69
650	16.16	12.52
680	31.67	20.03
710	48.29	36.58
2000	58.12	56.04



P.O. Box 350166, Brooklyn, New York 11235-0003 (718) 934-4500 Fax (718) 332-4661 For detailed performance specs & shopping online see Mini-Circuits web site

The Design Engineers Search Engine Provides ACTUAL Data Instantly From MINI-CIRCUITS At: www.minicircuits.com

IF/RF MICROWAVE COMPONENTS

REV. OR
M120764
EDR-9539UF1
BPF-A490+
URJ/RAV
081218
Page 1 of 1