

# Bandpass Filter

## BPF-A410+

50Ω 365 to 455 MHz

### Maximum Ratings

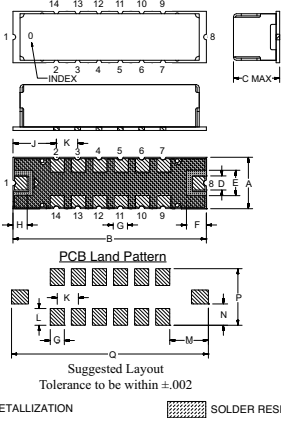
Operating Temperature	-40°C to 85°C
Storage Temperature	-55°C to 100°C
RF Power Input	0.5*W at 25°C

\*Passband rating, derate linearly to 0.25W at 100°C ambient.

### Pin Connections

RF IN	1
RF OUT	8
GROUND	2,3,4,5,6,7,9,10,11,12,13,14

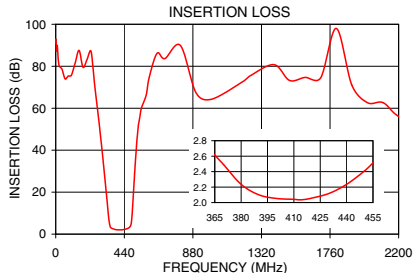
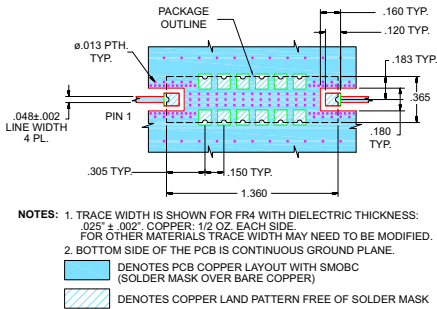
### Outline Drawing



### Outline Dimensions (inch/mm)

A	B	C	D	E	F	G	H
.365	1.360	.35	.100	.180	.140	.100	.100
9.27	34.54	8.89	2.54	4.57	3.58	2.54	2.54
J	K	L	M	N	P	Q	wt.
.305	.150	.120	.275	.152	.405	1.400	grams
7.75	3.81	3.05	6.99	3.87	10.29	35.65	4.0

### Demo Board MCL P/N: TB-363+ Suggested PCB Layout (PL-227)



### Features

- Linear Phase, up to ±8 deg Typ @ Fc ± 45 MHz
- High Rejection
- Shielded case
- Aqueous washable

### Applications

- Military Communications
- Harmonic Rejection
- Transmitters / Receivers



CASE STYLE: HQ1157  
PRICE: \$29.95 ea. QTY (1-9)

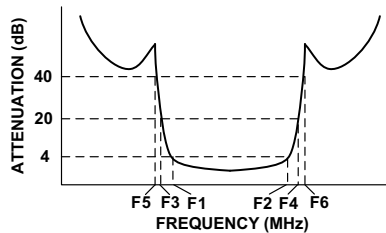
+ RoHS compliant in accordance with EU Directive (2002/95/EC)

The +Suffix has been added in order to identify RoHS Compliance. See our web site for RoHS Compliance methodologies and qualifications.

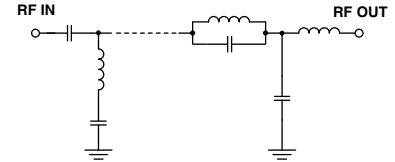
### Bandpass Filter Electrical Specifications (T<sub>AMB</sub> = 25°C)

CENTER FREQ. (MHz)	PASSBAND (MHz) (Loss < 4dB)	STOPBANDS (MHz)				MAXIMUM DEVIATION FROM LINEAR PHASE (deg.)	VSWR (:1)		
		Loss > 20dB		Loss > 40dB			Passband		Stopband
Fc	F1 - F2	F3	F4	F5	F6	Fc ± 45MHz	Typ.	Max.	Typ.
410	365 - 455	300	515	275	535-2200	±15	1.5	1.9	20

### Typical Frequency Response

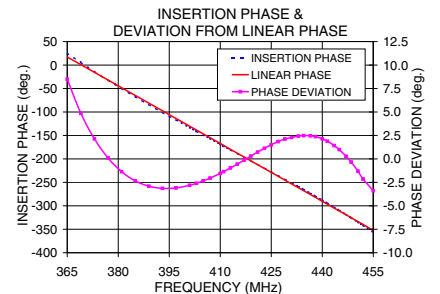
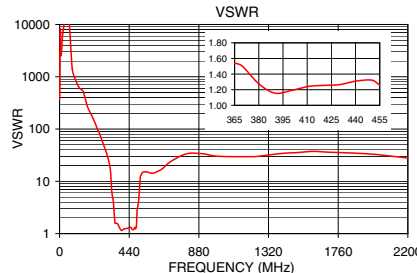


### Functional Schematic



### Typical Performance Data at 25°C

Frequency (MHz)	Insertion Loss (dB)	VSWR (:1)	Frequency (MHz)	Deviation from Linear Phase (deg.)
0.5	91.09	366.11	365.0	8.48
275	55.04	52.96	370.0	4.11
300	37.87	32.29	375.0	1.57
320	23.09	17.31	380.0	-0.69
330	15.36	6.44	390.0	-2.91
340	7.64	4.00	395.0	-3.16
365	2.61	1.54	400.0	-2.97
380	2.24	1.28	405.0	-2.41
410	2.04	1.24	410.0	-1.63
430	2.12	1.26	415.0	-0.66
455	2.51	1.26	419.0	0.19
485	5.28	1.36	425.0	1.41
490	9.11	2.80	430.0	2.18
495	15.26	3.43	435.0	2.48
515	38.52	13.23	440.0	2.14
535	53.84	15.14	445.0	0.99
1000	64.28	30.17	450.0	-1.06
2200	56.09	27.88	455.0	-4.08



P.O. Box 350166, Brooklyn, New York 11235-0003 (718) 934-4500 Fax (718) 332-4661 For detailed performance specs & shopping online see Mini-Circuits web site



The Design Engineers Search Engine Provides ACTUAL Data Instantly From MINI-CIRCUITS At: [www.minicircuits.com](http://www.minicircuits.com)

RF/IF MICROWAVE COMPONENTS

REV. OR  
M117937  
EDR-8842AUF1  
BPF-A410+  
URJ/RAV  
080603  
Page 1 of 1