

Bandpass Filter

BPF-A400+

50Ω 390 to 410 MHz

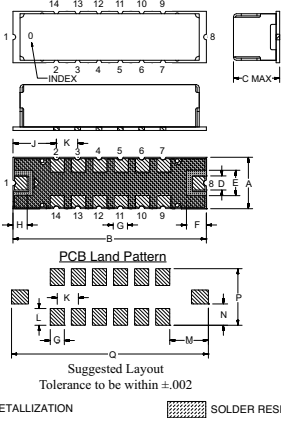
Maximum Ratings

Operating Temperature	-40°C to 85°C
Storage Temperature	-55°C to 100°C
RF Power Input	0.5*W at 25°C
*Passband rating, derate linearly to 0.25W at 100°C ambient.	

Pin Connections

RF IN	1
RF OUT	8
GROUND	2,3,4,5,6,7,9,10,11,12,13,14

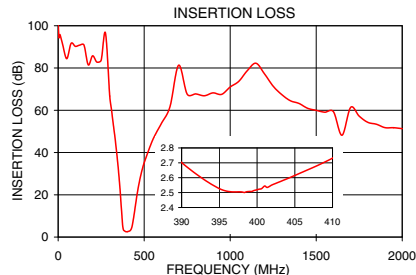
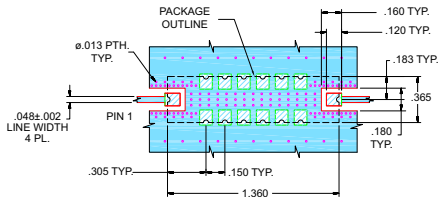
Outline Drawing



Outline Dimensions (inch/mm)

A	B	C	D	E	F	G	H
.365	1.360	.35	.100	.180	.140	.100	.100
9.27	34.54	8.89	2.54	4.57	3.58	2.54	2.54
J	K	L	M	N	P	Q	wt.
.305	.150	.120	.275	.152	.405	1.400	grams
7.75	3.81	3.05	6.99	3.87	10.29	35.65	4.0

Demo Board MCL P/N: TB-363+ Suggested PCB Layout (PL-227)



Features

- Linear Phase, up to ±6 deg Typ @ Fc ± 15 MHz
- High Rejection
- Shielded case
- Aqueous washable

Applications

- Military Communications
- Harmonic Rejection
- Transmitters / Receivers



CASE STYLE: HQ1157
PRICE: \$29.95 ea. QTY (1-9)

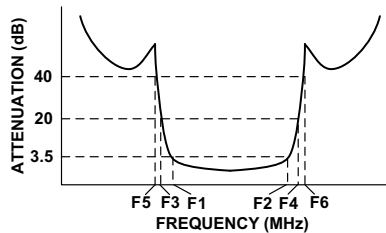
+ RoHS compliant in accordance with EU Directive (2002/95/EC)

The +Suffix has been added in order to identify RoHS Compliance. See our web site for RoHS Compliance methodologies and qualifications.

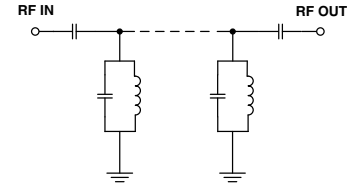
Bandpass Filter Electrical Specifications (T_{AMB} = 25°C)

CENTER FREQ. (MHz)	PASSBAND (MHz) (Loss < 3.5dB)	STOPBANDS (MHz)				MAXIMUM DEVIATION FROM LINEAR PHASE (deg.)	VSWR (:1)		
		Loss > 20dB		Loss > 40dB			Passband		Stopband
Fc	F1 - F2	F3	F4	F5	F6	Fc ± 15MHz	Typ.	Max.	Typ.
400	390 - 410	350	490	320	600-2000	±13	1.5	1.9	20

Typical Frequency Response

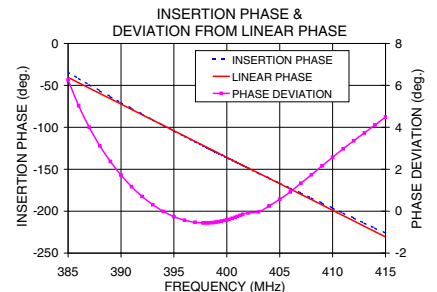
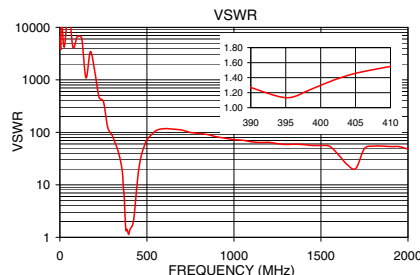


Functional Schematic



Typical Performance Data at 25°C

Frequency (MHz)	Insertion Loss (dB)	VSWR (:1)	Frequency (MHz)	Deviation from Linear Phase (deg.)
0.5	100.93	6634.72	385.0	6.26
320	53.72	59.78	386.0	5.03
350	31.89	27.00	388.0	3.12
360	22.26	16.63	390.0	1.72
370	10.66	5.88	392.0	0.70
375	5.46	2.34	394.0	-0.01
390	2.70	1.27	396.0	-0.43
395	2.53	1.13	398.0	-0.56
400	2.52	1.30	400.0	-0.42
405	2.62	1.46	401.0	-0.25
410	2.73	1.55	402.0	-0.08
430	5.17	3.22	404.0	0.25
440	9.94	7.75	406.0	0.92
460	20.71	26.92	408.0	1.74
490	32.37	60.49	410.0	2.57
600	53.76	117.41	412.0	3.36
1000	71.03	72.46	414.0	4.11
2000	51.29	47.99	415.0	4.49



P.O. Box 350166, Brooklyn, New York 11235-0003 (718) 934-4500 Fax (718) 332-4661 For detailed performance specs & shopping online see Mini-Circuits web site



The Design Engineers Search Engine Provides ACTUAL Data Instantly From MINI-CIRCUITS At: www.minicircuits.com

RF/IF MICROWAVE COMPONENTS

REV. OR
M117937
EDR-8841AUF1
BPF-A400+
URJ/RAV
080603
Page 1 of 1