

Bandpass Filter

BPF-A328+

50Ω 327 to 329 MHz

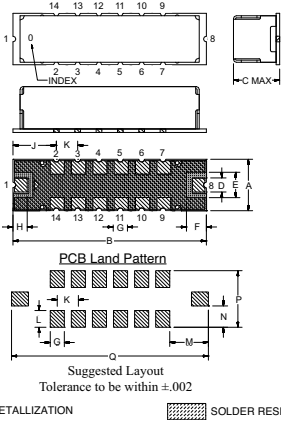
Maximum Ratings

Operating Temperature	-40°C to 85°C
Storage Temperature	-55°C to 100°C
RF Power Input	0.5*W at 25°C
*Passband rating, derate linearly to 0.25W at 100°C ambient.	

Pin Connections

RF IN	1
RF OUT	8
GROUND	2,3,4,5,6,7,9,10,11,12,13,14

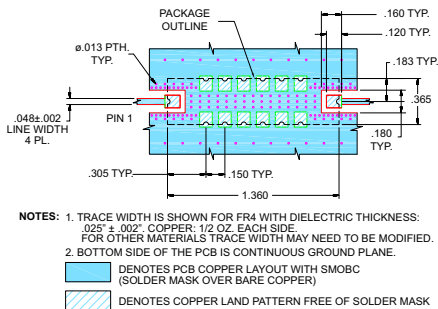
Outline Drawing



Outline Dimensions (inch/mm)

A	B	C	D	E	F	G	H
.365	1.360	.35	.100	.180	.140	.100	.100
9.27	34.54	8.89	2.54	4.57	3.58	2.54	2.54
J	K	L	M	N	P	Q	wt.
.305	.150	.120	.275	.152	.405	1.400	grams
7.75	3.81	3.05	6.99	3.87	10.29	35.65	4.0

Demo Board MCL P/N: TB-363+ Suggested PCB Layout (PL-227)



Features

- Linear Phase, up to ±3 deg Typ @ Fc ± 7.5 MHz
- Good VSWR, 1.2:1 Typ @ Passband
- High Rejection
- Shielded case
- Aqueous washable

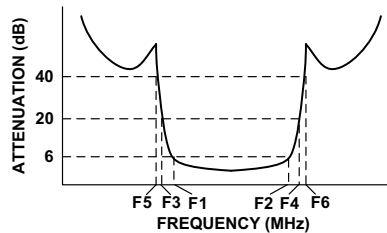
Applications

- Military Radio
- Harmonic Rejection
- Transmitters / Receivers

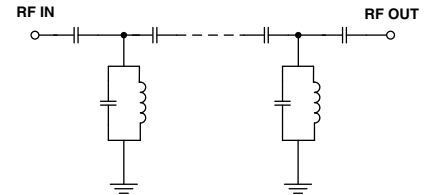
Bandpass Filter Electrical Specifications (T_{AMB} = 25°C)

CENTER FREQ. (MHz)	PASSBAND (MHz) (Loss < 6dB)	STOPBANDS (MHz)				MAXIMUM DEVIATION FROM LINEAR PHASE (deg.)	VSWR (:1)		
		Loss > 20dB		Loss > 40dB			Passband		Stopband
Fc	F1 - F2	F3	F4	F5	F6	Fc ± 7.5MHz	Typ.	Max.	Typ.
328	327 - 329	305	350	300	370-2000	±6	1.2	1.7	20

Typical Frequency Response

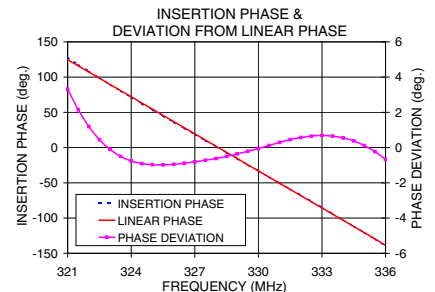
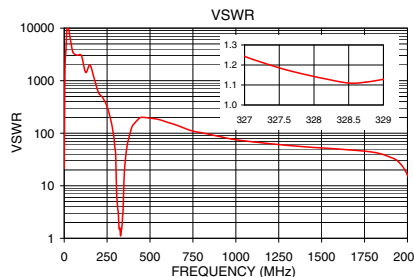


Functional Schematic



Typical Performance Data at 25°C

Frequency (MHz)	Insertion Loss (dB)	VSWR (:1)	Frequency (MHz)	Deviation from Linear Phase (deg.)
0.5	98.42	21.31	320.5	3.31
300.0	47.79	40.68	321.0	2.15
305.0	34.72	7.84	321.5	1.20
310.0	21.65	4.39	322.0	0.45
313.0	13.80	3.50	323.0	-0.50
315.0	8.57	3.09	324.0	-0.91
327.0	4.84	1.24	325.0	-0.98
327.5	4.80	1.19	326.0	-0.89
328.0	4.77	1.14	327.0	-0.72
328.5	4.73	1.11	327.5	-0.62
329.0	4.74	1.13	328.0	-0.50
337.0	8.74	1.77	329.0	-0.21
343.0	16.63	3.43	330.0	0.12
350.0	31.08	16.97	331.0	0.45
370.0	54.91	66.63	332.0	0.65
500.0	92.01	193.16	333.0	0.65
1000.0	66.20	75.04	334.0	0.38
2000.0	62.21	16.09	335.5	-0.67



P.O. Box 350166, Brooklyn, New York 11235-0003 (718) 934-4500 Fax (718) 332-4661 For detailed performance specs & shopping online see Mini-Circuits web site



The Design Engineers Search Engine Provides ACTUAL Data Instantly From MINI-CIRCUITS At: www.minicircuits.com

RF/IF MICROWAVE COMPONENTS

REV. OR
M117937
EDR-8840AUF1
BPF-A328+
URJ/RAV
080602
Page 1 of 1