

Bandpass Filter

BPF-A135+

50Ω 132 to 138 MHz

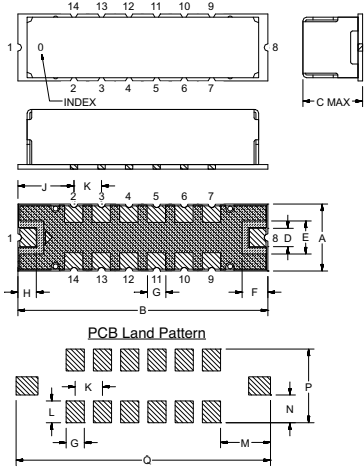
Maximum Ratings

Operating Temperature	-40°C to 85°C
Storage Temperature	-55°C to 100°C
RF Power Input	0.5*W at 25°C
*Passband rating, derate linearly to 0.25W at 100°C ambient.	

Pin Connections

RF IN	1
RF OUT	8
GROUND	2,3,4,5,6,7,9,10,11,12,13,14

Outline Drawing



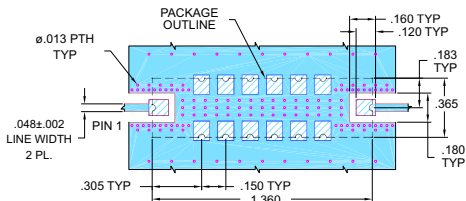
Suggested Layout
Tolerance to be within ±.002

METALLIZATION
SOLDER RESIST

Outline Dimensions (inch/mm)

A	B	C	D	E	F	G	H
.365	1.360	.35	.100	.180	.140	.100	.100
9.27	34.54	8.89	2.54	4.57	3.58	2.54	2.54
J	K	L	M	N	P	Q	wt.
.305	.150	.120	.275	.152	.405	1.400	grams
7.75	3.81	3.05	6.99	3.87	10.29	35.65	4.0

Demo Board MCL P/N: TB-363+
Suggested PCB Layout (PL-227)



NOTES:

- TRACE WIDTH IS SHOWN FOR FR4 WITH DIELECTRIC THICKNESS: .025" ± .002". COPPER: 1/2 OZ. EACH SIDE. FOR OTHER MATERIALS TRACE WIDTH MAY NEED TO BE MODIFIED.
 - BOTTOM SIDE OF THE PCB IS CONTINUOUS GROUND PLANE.
- DENOTES PCB COPPER LAYOUT WITH SMOBC (SOLDER MASK OVER BARE COPPER)
 DENOTES COPPER LAND PATTERN FREE OF SOLDER MASK

Features

- High Rejection
- Good VSWR, 1.2:1 Typ @ Passband
- Shielded case
- Aqueous washable

Applications

- Military Communications
- Harmonic Rejection
- Transmitters / Receivers



CASE STYLE: HQ1157
PRICE: \$29.95 ea. QTY (1-9)

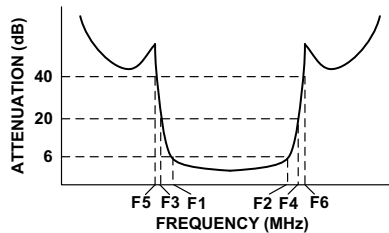
+ RoHS compliant in accordance with EU Directive (2002/95/EC)

The +Suffix has been added in order to identify RoHS Compliance. See our web site for RoHS Compliance methodologies and qualifications.

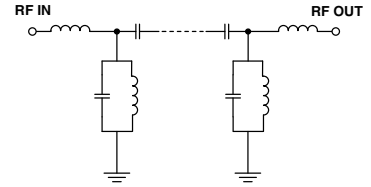
Bandpass Filter Electrical Specifications (T_{AMB} = 25°C)

CENTER FREQ. (MHz)	PASSBAND (MHz) (Loss < 6dB)	STOPBANDS (MHz)				VSWR (:1)		
		Loss > 20dB		Loss > 40dB		Passband		Stopband
F _c	F ₁ - F ₂	F ₃	F ₄	F ₅	F ₆	Typ.	Max.	Typ.
135	132 - 138	123	148	115	160 - 2000	1.2	1.5	20

Typical Frequency Response

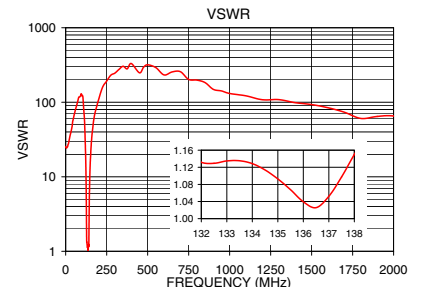


Functional Schematic



Typical Performance Data at 25°C

Frequency (MHz)	Insertion Loss (dB)	VSWR (:1)
1	79.78	24.85
50	80.36	64.89
115	57.37	55.35
123	30.67	14.02
126	16.12	4.58
128	7.79	1.50
132	4.65	1.13
133	4.48	1.13
135	4.36	1.09
136	4.39	1.04
138	4.69	1.15
142	8.28	1.66
144	15.61	4.29
148	30.24	11.62
160	55.67	35.62
500	87.99	318.48
1000	80.82	131.27
2000	64.20	65.47



P.O. Box 350166, Brooklyn, New York 11235-0003 (718) 934-4500 Fax (718) 332-4661 For detailed performance specs & shopping online see Mini-Circuits web site



The Design Engineers Search Engine Provides ACTUAL Data Instantly From MINI-CIRCUITS At: www.minicircuits.com

RF/IF MICROWAVE COMPONENTS

REV. OR
M117937
EDR-8918BUF1
BPF-A135+
URJ/RAV
080603
Page 1 of 1