

Bandpass Filter

BPF-A1340+

50Ω 1000 to 1800 MHz

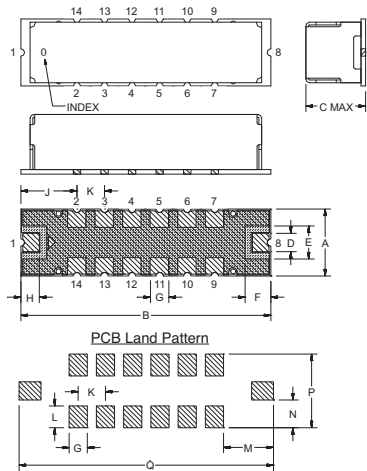
Maximum Ratings

Operating Temperature	-40°C to 85°C
Storage Temperature	-55°C to 100°C
RF Power Input	1W at 25°C

Pin Connections

RF IN	1
RF OUT	8
GROUND	2,3,4,5,6,7,9,10,11,12,13,14

Outline Drawing



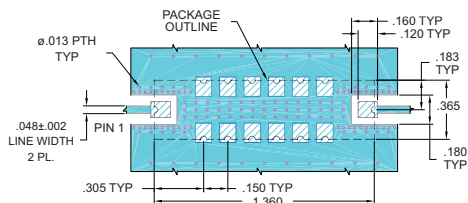
Suggested Layout
Tolerance to be within ±.002

METALLIZATION
SOLDER RESIST

Outline Dimensions (inch/mm)

A	B	C	D	E	F	G	H
.365	1.360	.35	.100	.180	.140	.100	.100
9.27	34.54	8.89	2.54	4.57	3.58	2.54	2.54
J	K	L	M	N	P	Q	wt.
.305	.150	.120	.275	.152	.405	1.400	grams
7.75	3.81	3.05	6.99	3.87	10.29	35.65	4.0

Demo Board MCL P/N: TB-363+
Suggested PCB Layout (PL-227)



NOTES:

- TRACE WIDTH IS SHOWN FOR FR4 WITH DIELECTRIC THICKNESS: .025" ± .002". COPPER: 1/2 OZ. EACH SIDE. FOR OTHER MATERIALS TRACE WIDTH MAY NEED TO BE MODIFIED.
 - BOTTOM SIDE OF THE PCB IS CONTINUOUS GROUND PLANE.
- DENOTES PCB COPPER LAYOUT WITH SMOBC (SOLDER MASK OVER BARE COPPER)
 DENOTES COPPER LAND PATTERN FREE OF SOLDER MASK

Features

- Good VSWR, 1.4:1 Typ @ Passband
- High Rejection
- Shielded case
- Aqueous washable

Applications

- Test Equipment
- Radio
- Harmonic Rejection
- Transmitters / Receivers



CASE STYLE: HQ1157
PRICE: \$39.95 ea. QTY (1-9)

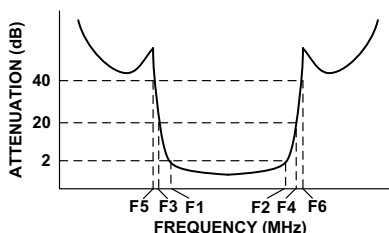
+ RoHS compliant in accordance with EU Directive (2002/95/EC)

The +Suffix has been added in order to identify RoHS Compliance. See our web site for RoHS Compliance methodologies and qualifications.

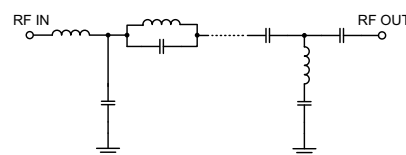
Bandpass Filter Electrical Specifications (T_{AMB} = 25°C)

CENTER FREQ. (MHz)	PASSBAND (MHz) (Loss < 2dB)	STOPBANDS (MHz)				VSWR (:1)		
		Loss > 20dB	Loss 40dB Typ.	Passband Typ.	Passband Max.	Stopband Typ.		
F _c	F ₁ - F ₂	F ₃	F ₄	F ₅	F ₆			
1340	1000 - 1800	800	2300	750	2400 - 4300	1.4	2.0	20

Typical Frequency Response

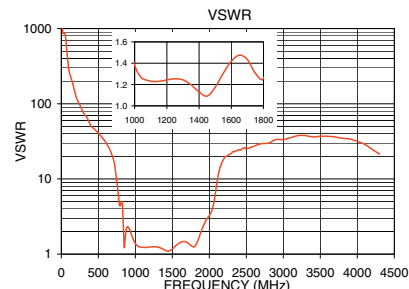


Functional Schematic



Typical Performance Data at 25°C

Frequency (MHz)	Insertion Loss (dB)	VSWR (:1)
1	88.02	1737.18
50	64.98	868.59
750	49.66	9.23
800	28.71	4.53
820	13.07	4.99
830	7.77	3.78
860	2.18	1.50
1000	1.04	1.38
1200	0.85	1.24
1340	0.84	1.21
1600	1.08	1.42
1800	1.29	1.26
1950	2.88	2.76
2080	7.23	6.42
2140	14.48	13.70
2300	32.45	22.00
2400	42.07	24.48
4300	44.65	21.46



P.O. Box 350166, Brooklyn, New York 11235-0003 (718) 934-4500 Fax (718) 332-4661 For detailed performance specs & shopping online see Mini-Circuits web site



The Design Engineers Search Engine Provides ACTUAL Data Instantly From MINI-CIRCUITS At: www.minicircuits.com

IF/RF MICROWAVE COMPONENTS

REV. OR
M121478
EDR-9407AUF1
BPF-A1340+
URJ/RAV
090224
Page 1 of 1