

Bandpass Filter

BPF-A122+

50Ω 119 to 125 MHz

Maximum Ratings

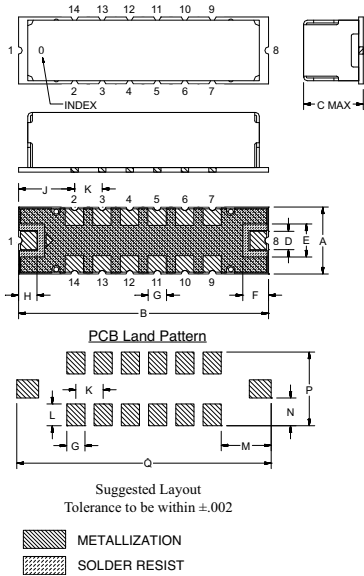
Operating Temperature	-40°C to 85°C
Storage Temperature	-55°C to 100°C
RF Power Input	0.5*W at 25°C

*Passband rating, derate linearly to 0.25W at 100°C ambient.

Pin Connections

RF IN	1
RF OUT	8
GROUND	2,3,4,5,6,7,9,10,11,12,13,14

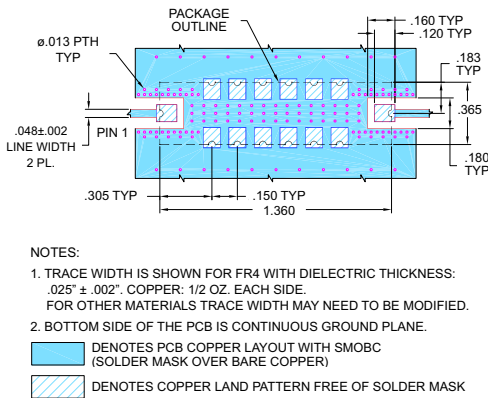
Outline Drawing



Outline Dimensions (inch/mm)

A	B	C	D	E	F	G	H
.365	1.360	.35	.100	.180	.140	.100	.100
9.27	34.54	8.89	2.54	4.57	3.58	2.54	2.54
J	K	L	M	N	P	Q	wt.
.305	.150	.120	.275	.152	.405	1.400	grams
7.75	3.81	3.05	6.99	3.87	10.29	35.65	4.0

Demo Board MCL P/N: TB-363+
Suggested PCB Layout(PL-227)



NOTES:

- TRACE WIDTH IS SHOWN FOR FR4 WITH DIELECTRIC THICKNESS: .025" ± .002". COPPER: 1/2 OZ. EACH SIDE. FOR OTHER MATERIALS TRACE WIDTH MAY NEED TO BE MODIFIED.
- BOTTOM SIDE OF THE PCB IS CONTINUOUS GROUND PLANE.

- DENOTES PCB COPPER LAYOUT WITH SMOBC (SOLDER MASK OVER BARE COPPER)
- DENOTES COPPER LAND PATTERN FREE OF SOLDER MASK

Features

- Good VSWR, 1.3:1 Typ @ Pass Band
- High Stop Band Rejection

Application

- Harmonic Rejection
- Transmitters/Receivers



CASE STYLE: HQ1157
PRICE: \$39.95 ea. QTY (1-9)

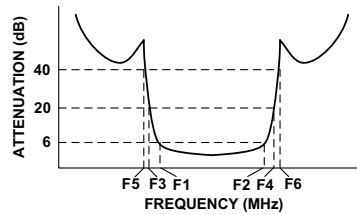
+ RoHS compliant in accordance with EU Directive (2002/95/EC)

The +Suffix has been added in order to identify RoHS Compliance. See our web site for RoHS Compliance methodologies and qualifications.

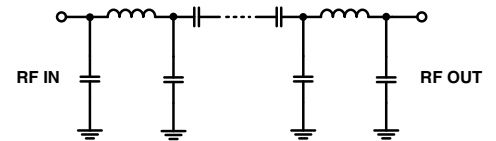
Bandpass Filter Electrical Specifications (T_{AMB} = 25°C)

CENTER FREQ. (MHz)	PASSBAND (MHz) (Loss < 6dB) F1 - F2	STOPBANDS (MHz)		VSWR (:1)	
		Loss > 20dB F3 F4	Loss > 40dB F5 F6	Passband Max.	Stopband Typ.
122	119 - 125	111 132	105 137 - 500	1.6	20

Typical Frequency Response

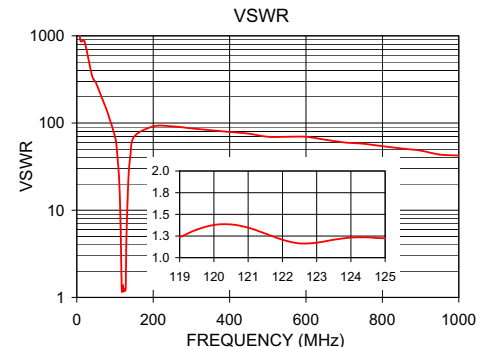
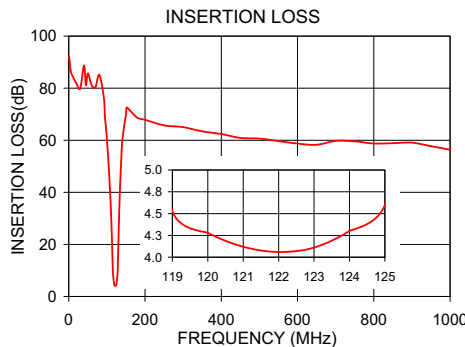


Functional Schematic



Typical Performance Data at 25°C

Frequency (MHz)	Insertion Loss (dB)	VSWR (:1)
1	92.37	1737.18
85	81.88	124.09
100	60.85	69.49
105	49.55	48.26
108	42.04	35.46
111	31.87	21.46
114	18.58	8.72
116	9.21	2.94
119	4.53	1.24
122	4.06	1.16
125	4.60	1.23
127	6.21	1.19
129	13.29	2.69
132	30.67	11.61
134	39.84	19.11
137	50.38	29.96
141	59.83	44.55
500	60.64	69.49



P.O. Box 350166, Brooklyn, New York 11235-0003 (718) 934-4500 Fax (718) 332-4661 For detailed performance specs & shopping online see Mini-Circuits web site



The Design Engineers Search Engine Provides ACTUAL Data Instantly From MINI-CIRCUITS At: www.minicircuits.com

RF/IF MICROWAVE COMPONENTS

REV. OR
M102075
EDR-7824U
BPF-A122+
URJ/RAV
080113
Page 1 of 1