

# Low Pass Filter

## BLP-70-75+

75Ω DC to 60 MHz

### Maximum Ratings

|                       |                |
|-----------------------|----------------|
| Operating Temperature | -55°C to 100°C |
| Storage Temperature   | -55°C to 100°C |
| RF Power Input        | 0.5W max.      |

### Features

- rugged shielded case
- other standard and custom BLP models available with wide selection of fco



CASE STYLE: FF968

| Connectors | Model      | Price       | Qty.  |
|------------|------------|-------------|-------|
| BNC        | BLP-70-75+ | \$33.95 ea. | (1-9) |

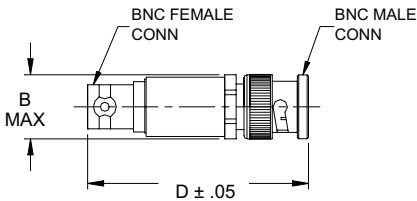
**+ RoHS compliant in accordance with EU Directive (2002/95/EC)**

*The +suffix has been added in order to identify RoHS Compliance. See our web site for RoHS Compliance methodologies and qualifications.*

### Application

- test equipment
- lab use
- video equipment

### Outline Drawing



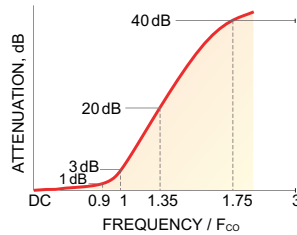
### Outline Dimensions (inch/mm)

| B     | D     | wt.   |
|-------|-------|-------|
| .62   | 2.27  | grams |
| 15.75 | 57.65 | 30.8  |

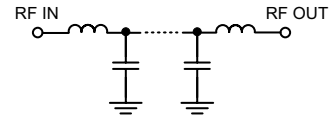
### Low Pass Filter Electrical Specifications

| PASSBAND (MHz) | fco, MHz Nom. | STOPBAND (MHz) |               | VSWR (:1)     |               |
|----------------|---------------|----------------|---------------|---------------|---------------|
|                |               | (Loss > 20dB)  | (Loss > 40dB) | Passband Typ. | Stopband Typ. |
| DC - 60        | 67            | 90 - 117       | 117 - 300     | 1.7           | 18            |

### typical frequency response

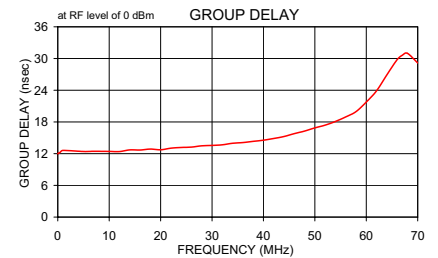
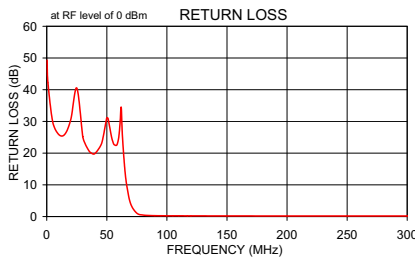


### functional schematic



### Typical Performance Data

| Frequency (MHz) | Insertion Loss (dB) |          | Return Loss (dB) | Frequency (MHz) | Group Delay (nsec) |
|-----------------|---------------------|----------|------------------|-----------------|--------------------|
|                 | $\bar{x}$           | $\sigma$ |                  |                 |                    |
| 0.3             | 0.02                | 0.00     | 49.3             | 0.03            | 12.00              |
| 20.0            | 0.08                | 0.00     | 30.6             | 0.10            | 12.05              |
| 30.0            | 0.13                | 0.01     | 25.2             | 0.50            | 12.29              |
| 40.0            | 0.20                | 0.04     | 19.8             | 1.00            | 12.62              |
| 50.0            | 0.24                | 0.01     | 31.1             | 5.00            | 12.41              |
| 60.0            | 0.43                | 0.02     | 25.2             | 10.00           | 12.42              |
| 65.0            | 0.76                | 0.14     | 14.8             | 14.00           | 12.71              |
| 67.0            | 1.40                | 0.30     | 8.9              | 18.00           | 12.87              |
| 70.0            | 3.55                | 0.58     | 3.9              | 20.00           | 12.73              |
| 73.0            | 7.01                | 0.71     | 1.7              | 24.00           | 13.17              |
| 78.0            | 13.52               | 0.66     | 0.6              | 28.00           | 13.49              |
| 90.0            | 26.80               | 0.59     | 0.3              | 30.00           | 13.56              |
| 100.0           | 35.62               | 0.64     | 0.3              | 34.00           | 13.97              |
| 117.0           | 48.03               | 0.79     | 0.2              | 40.00           | 14.54              |
| 130.0           | 56.51               | 1.05     | 0.2              | 44.00           | 15.25              |
| 150.0           | 71.39               | 3.91     | 0.2              | 50.00           | 16.88              |
| 200.0           | 74.34               | 3.05     | 0.2              | 54.00           | 18.10              |
| 230.0           | 73.44               | 1.87     | 0.2              | 60.00           | 21.76              |
| 250.0           | 72.96               | 1.54     | 0.2              | 64.00           | 26.90              |
| 280.0           | 73.66               | 1.86     | 0.2              | 67.00           | 30.61              |
| 300.0           | 73.99               | 1.39     | 0.2              | 70.00           | 29.17              |



P.O. Box 350166, Brooklyn, New York 11235-0003 (718) 934-4500 Fax (718) 332-4661 For detailed performance specs & shopping online see Mini-Circuits web site



The Design Engineers Search Engine Provides ACTUAL Data Instantly From MINI-CIRCUITS At: [www.minicircuits.com](http://www.minicircuits.com)

RF/IF MICROWAVE COMPONENTS

REV. OR  
M108739  
EDR-7646/1U  
BLP-70-75+  
URJ/RAV  
061218  
page 1 of 1